

Probe 1 - Gesamtauswertung (Teil 1)

Teilnehmer- nummer	1-Butanol		Butylacetat		Ethylbenzol	
	Labor- resultat ($\mu\text{g} / \text{m}^3$)	z - score	Labor- resultat ($\mu\text{g} / \text{m}^3$)	z - score	Labor- resultat ($\mu\text{g} / \text{m}^3$)	z - score
5	15,32		15,70	1,1	11,36	0,1
40	18,18		15,51	0,9	12,47	1,0
95	11,83		16,63	1,7	13,31	1,8
135	9,60		11,40	2,0	10,70	0,5
150	16,16		15,96	1,2	11,26	0,0
166	20,50		17,00	2,0	16,00	4,2
213	8,55		9,46	3,3	9,70	1,4

	Toluol- äquivalent ($\mu\text{g} / \text{m}^3$)		Toluol- äquivalent ($\mu\text{g} / \text{m}^3$)		Toluol- äquivalent ($\mu\text{g} / \text{m}^3$)	
213	5,95		8,70		12,30	

Die mit gekennzeichneten Felder sind Ausreißer!

	1-Butanol	Butylacetat	Ethylbenzol
Sollwert [$\mu\text{g} / \text{m}^3$]	16,30	14,20	11,30
Standardabweichung S_k [$\mu\text{g} / \text{m}^3$]		2,898	1,279
rel. Standardabweichung [%]		19,96	11,16
Gesamtmittelwert c_k [$\mu\text{g} / \text{m}^3$]		14,52	11,46

Probe 1 - Gesamtauswertung (Teil 2)

Teilnehmer- nummer	n-Heptan		p-Xylol		Toluol	
	Labor- resultat ($\mu\text{g} / \text{m}^3$)	z - score	Labor- resultat ($\mu\text{g} / \text{m}^3$)	z - score	Labor- resultat ($\mu\text{g} / \text{m}^3$)	z - score
5	14,82	0,2	16,37	0,4	14,56	0,3
40	16,05	1,0	17,94	1,4	15,78	1,2
95	17,30	1,8	18,37	1,6	16,28	1,5
135	13,20	1,0	15,95	0,1	13,50	0,4
150	15,60	0,7	15,90	0,1	14,05	0,0
166	24,00	6,4	23,00	4,6	17,00	2,1
213	12,65	1,3	13,70	1,3	14,30	0,1

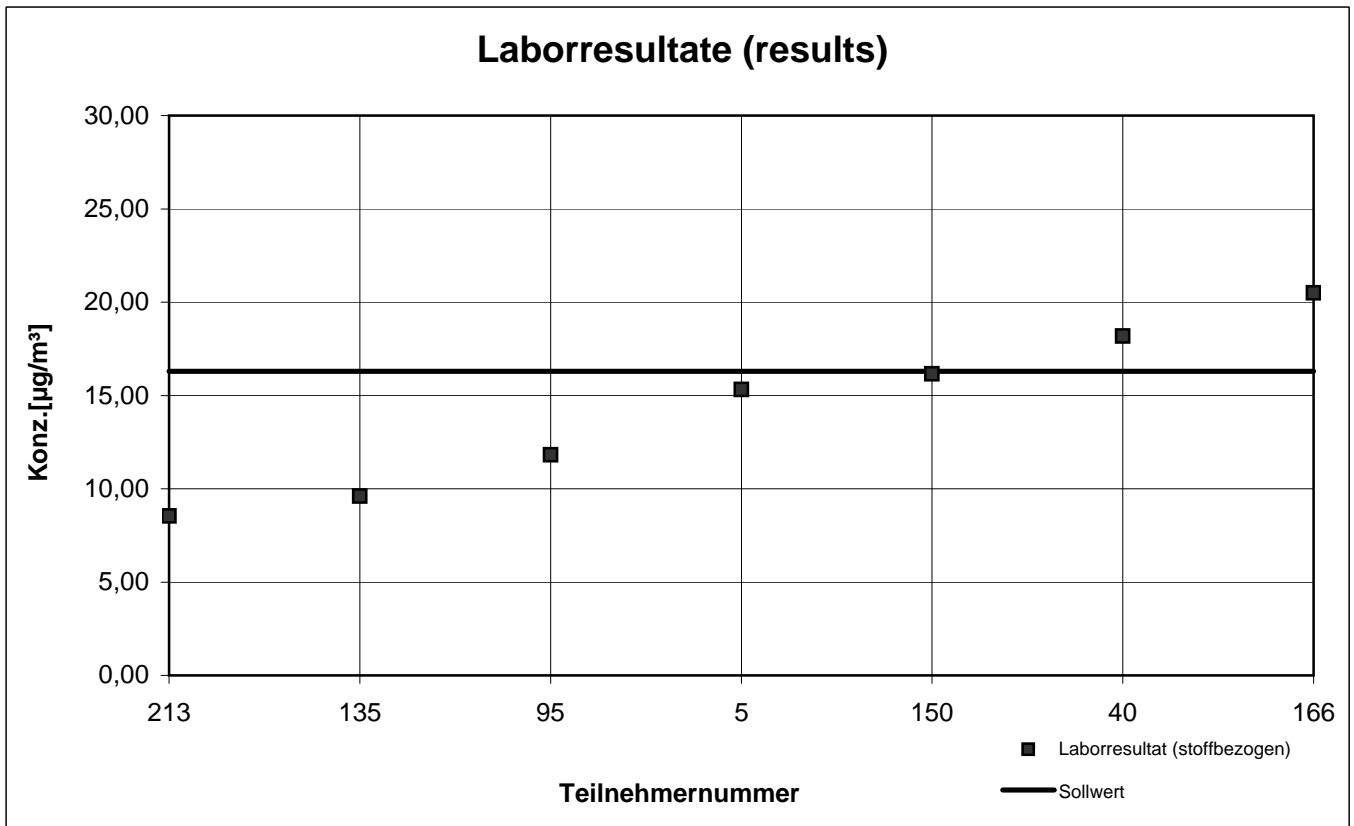
	Toluol- äquivalent ($\mu\text{g} / \text{m}^3$)		Toluol- äquivalent ($\mu\text{g} / \text{m}^3$)	
213	16,80		16,60	

Die mit gekennzeichneten Felder sind Ausreißer!

	n-Heptan	p-Xylol	Toluol
Sollwert [$\mu\text{g} / \text{m}^3$]	14,60	15,80	14,10
Standardabweichung S_k [$\mu\text{g} / \text{m}^3$]	1,761	1,672	1,294
rel. Standardabweichung [%]	11,79	10,21	8,59
Gesamtmittelwert c_k [$\mu\text{g} / \text{m}^3$]	14,94	16,37	15,07

Probe 1 (sample 1)

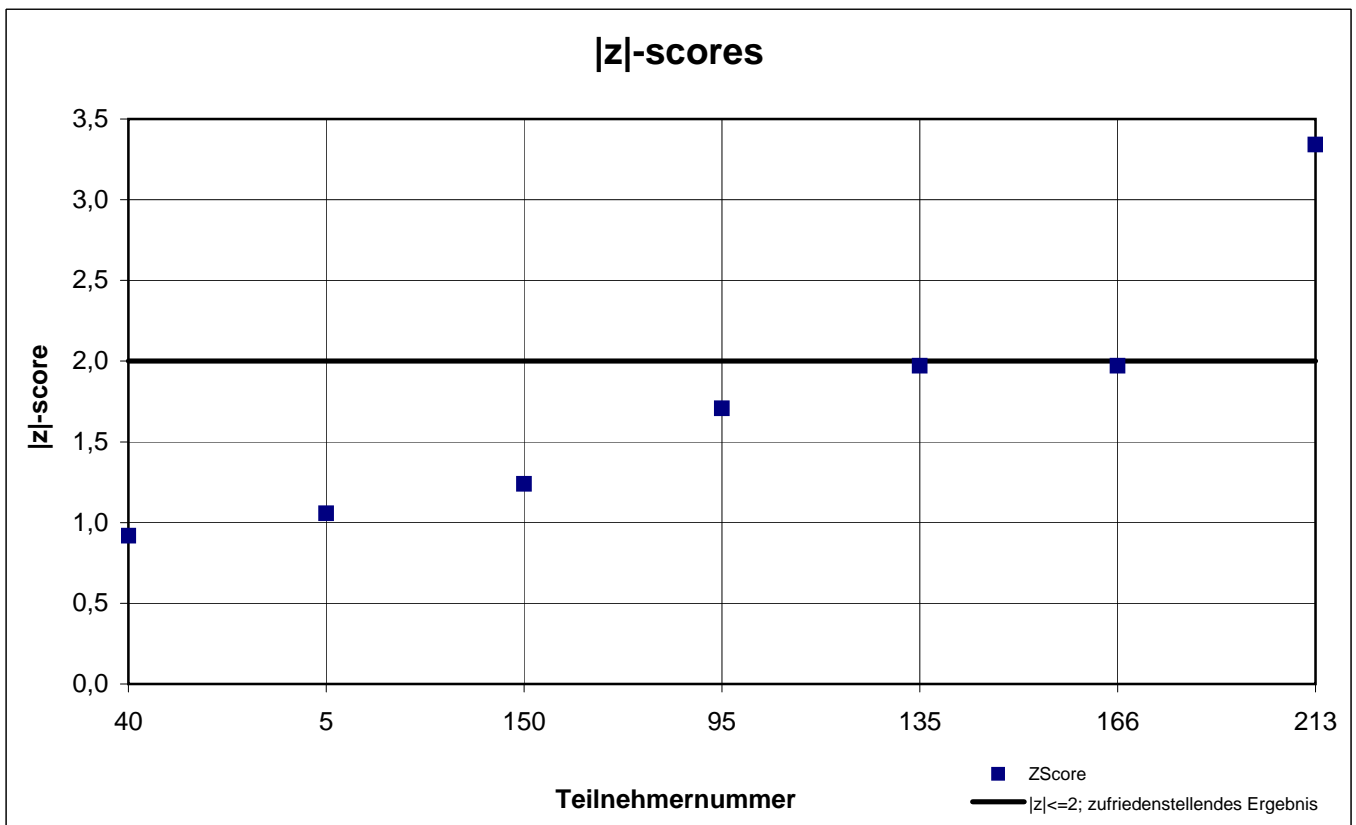
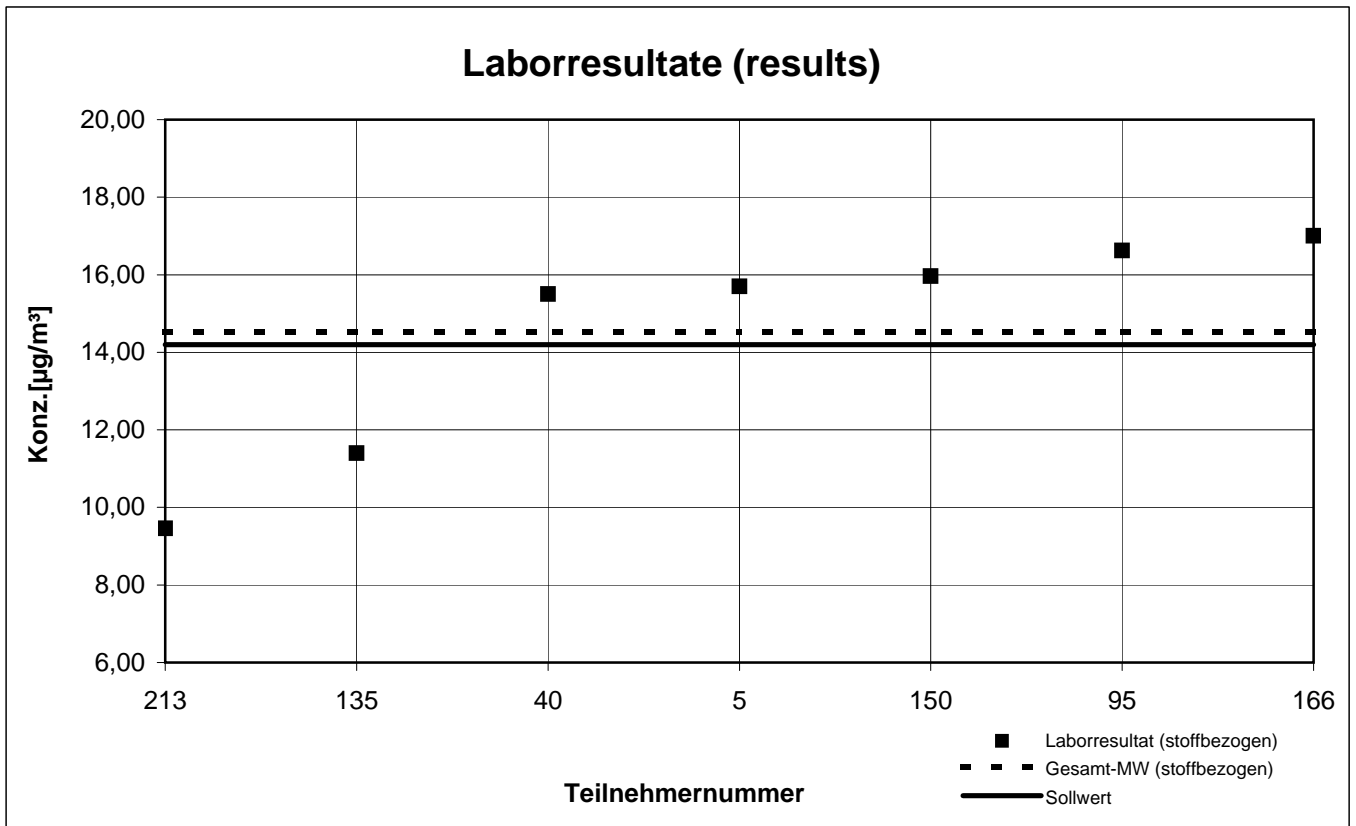
1-Butanol



keine z-score-Auswertung

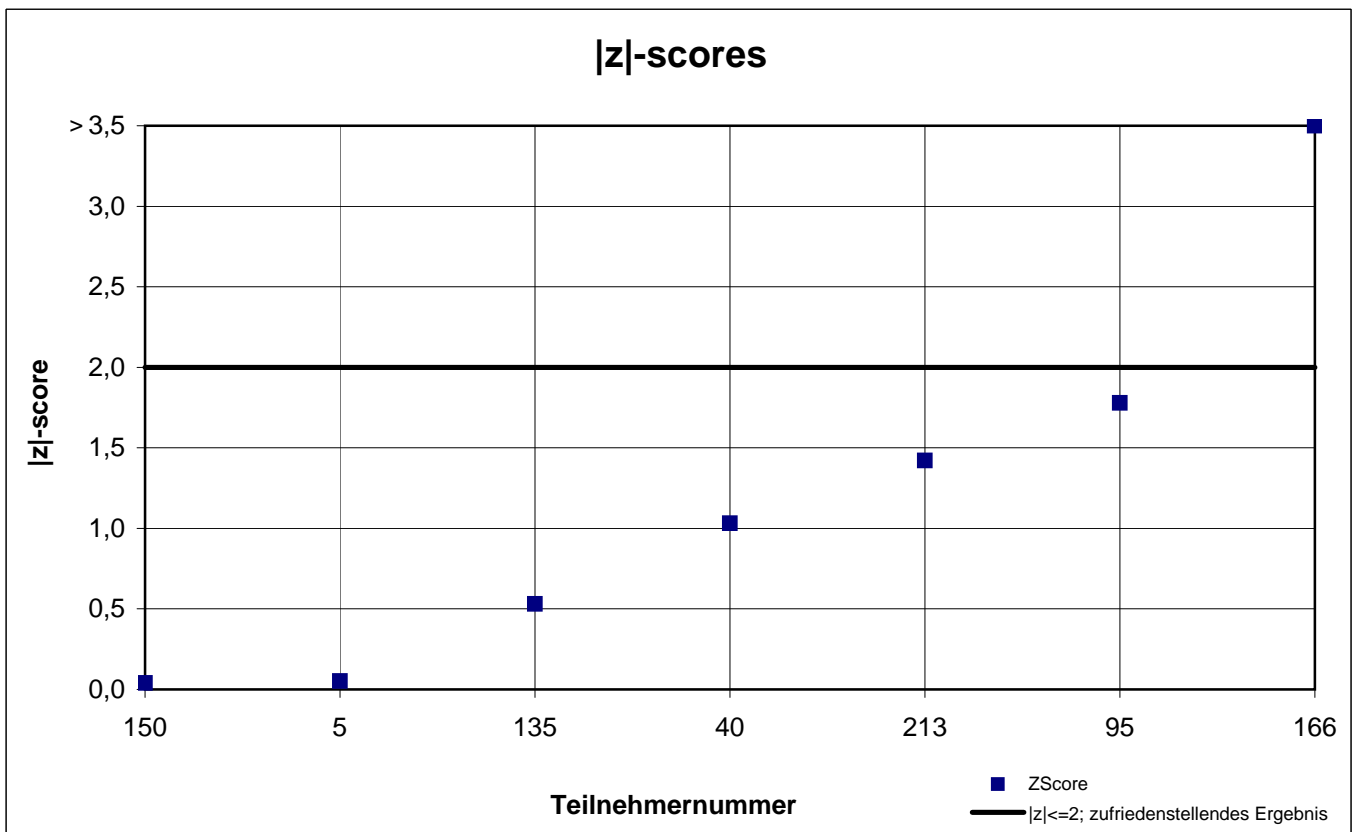
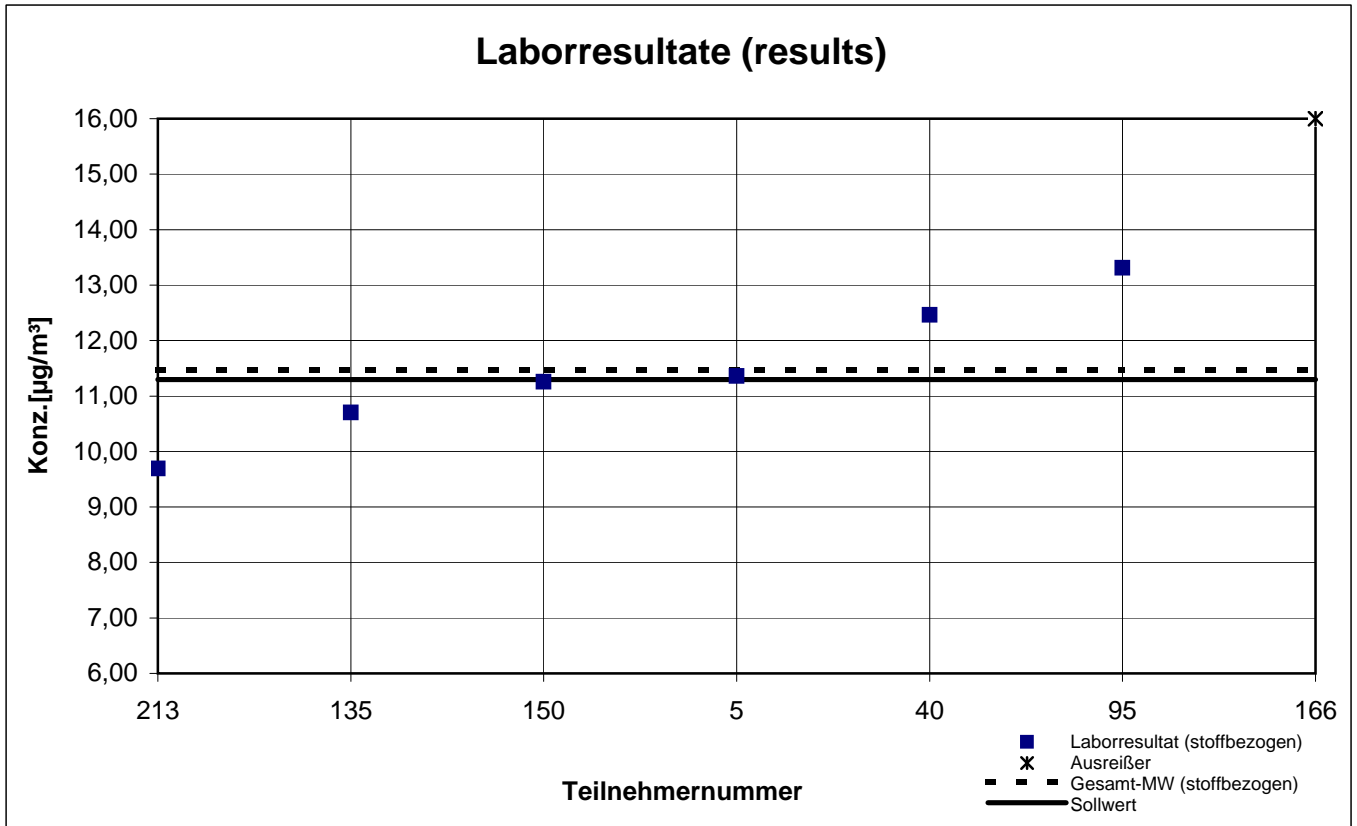
Probe 1 (sample 1)

Butylacetat



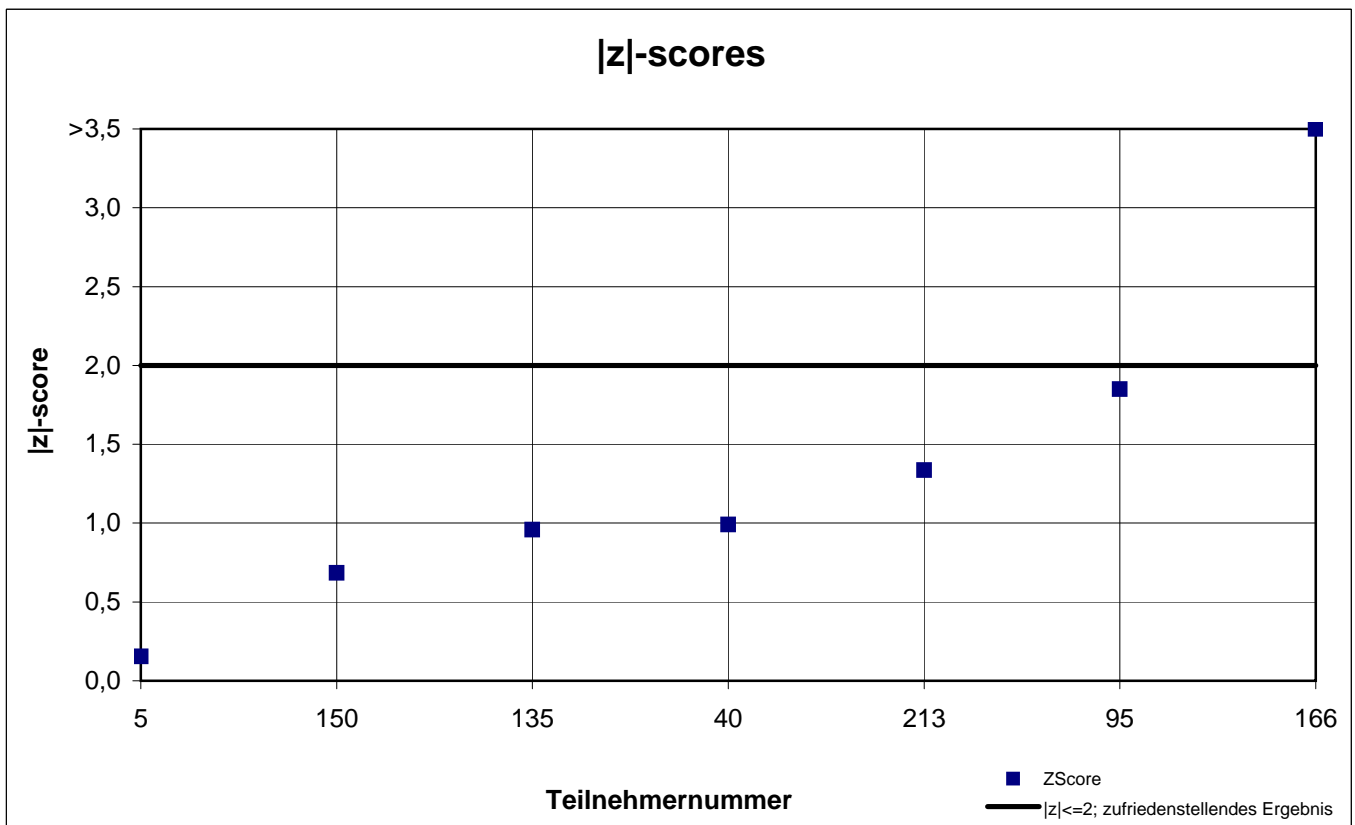
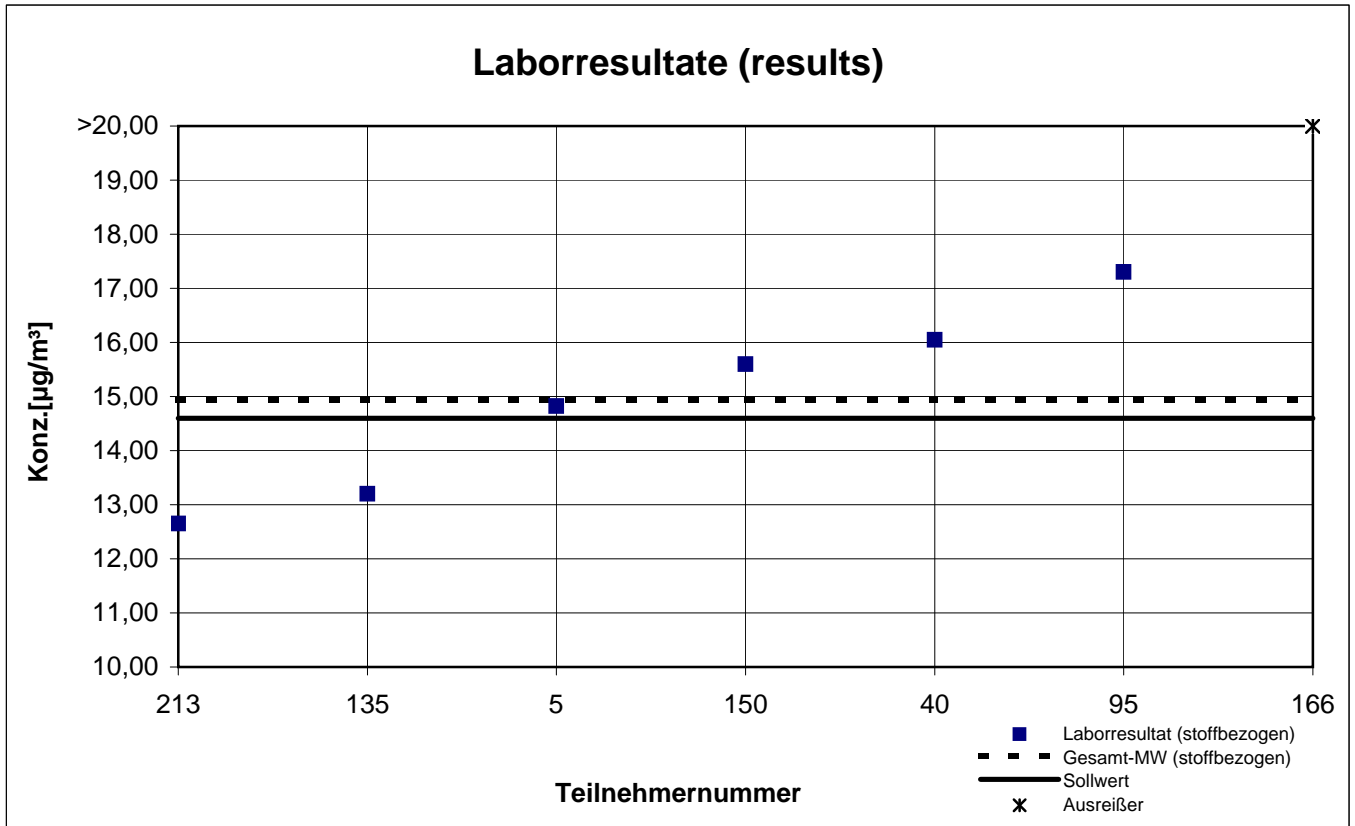
Probe 1 (sample 1)

Ethylbenzol



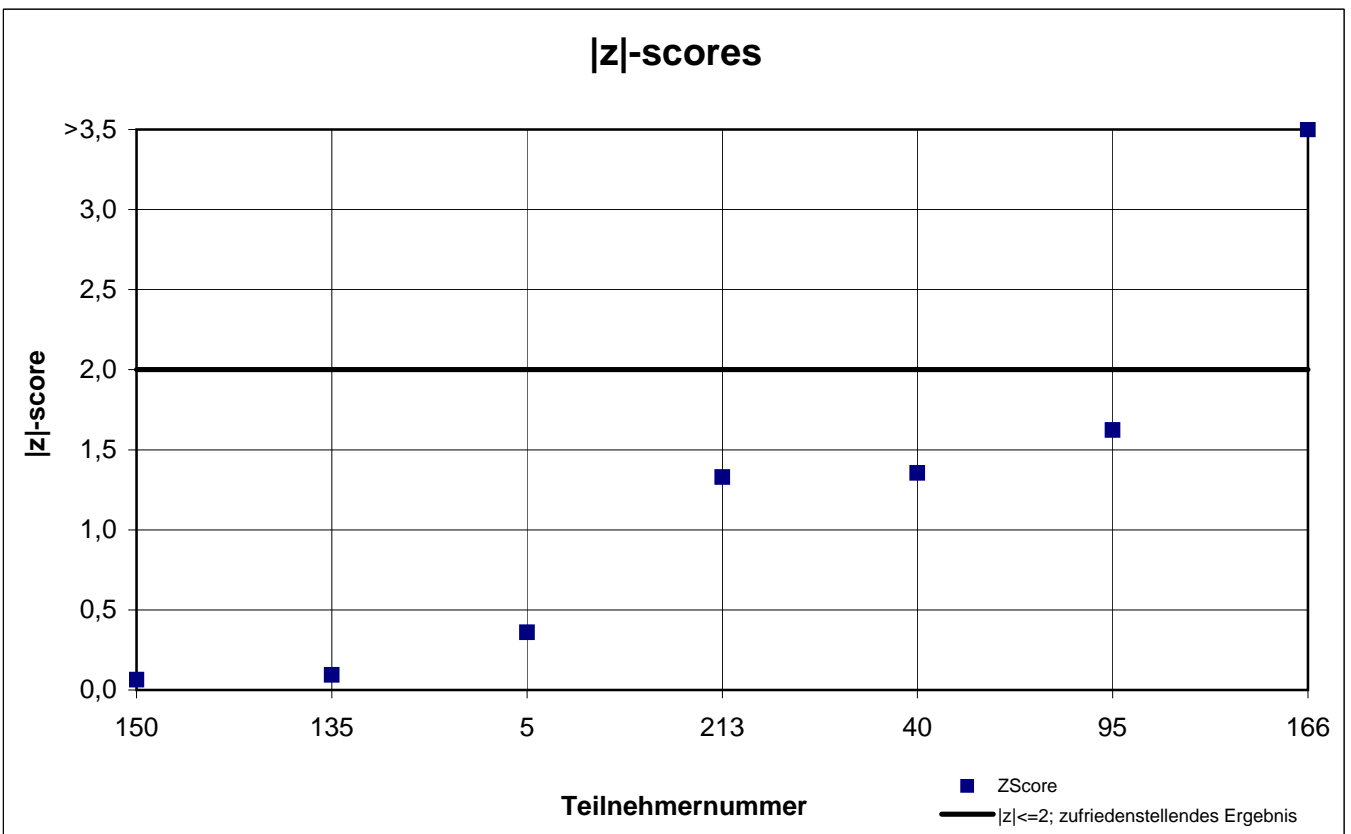
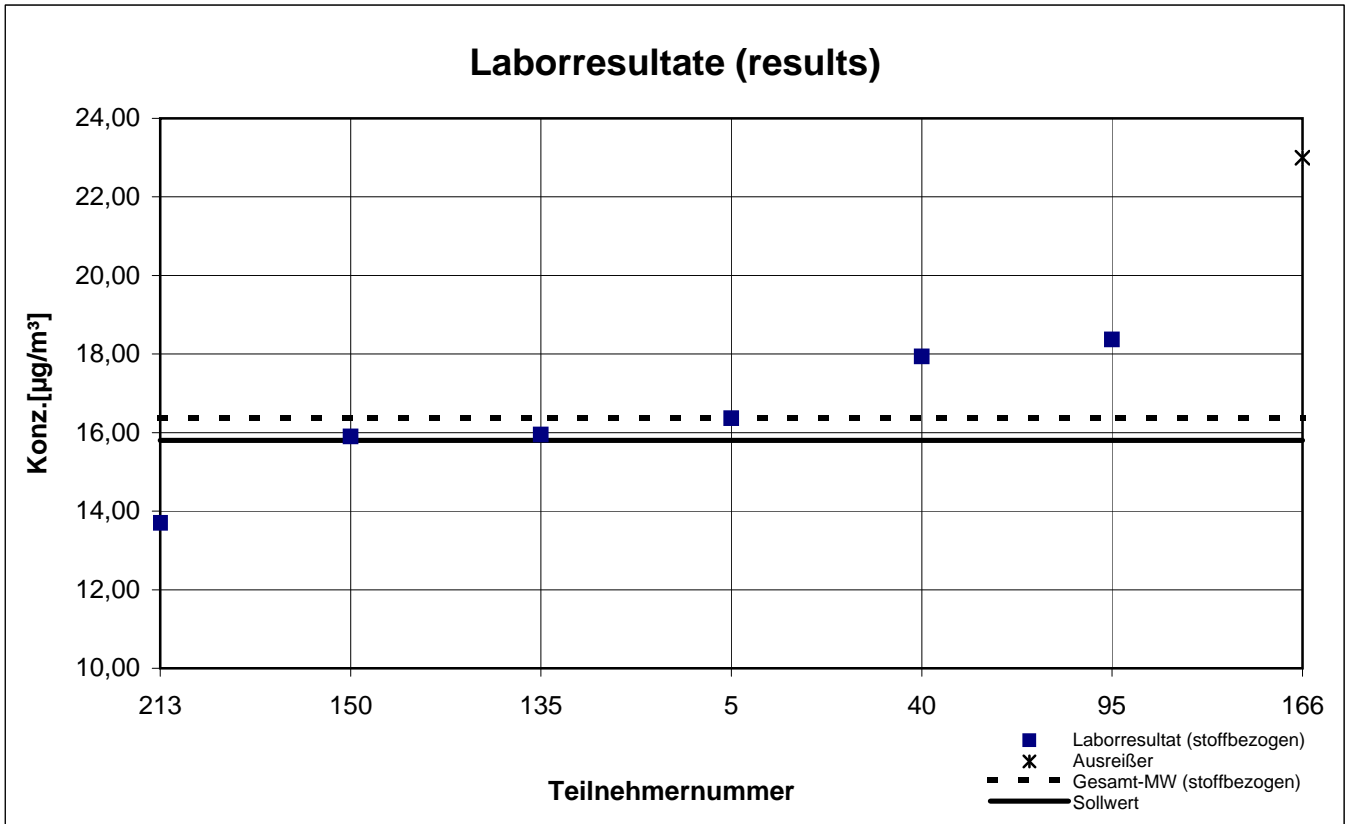
Probe 1 (sample 1)

n-Heptan



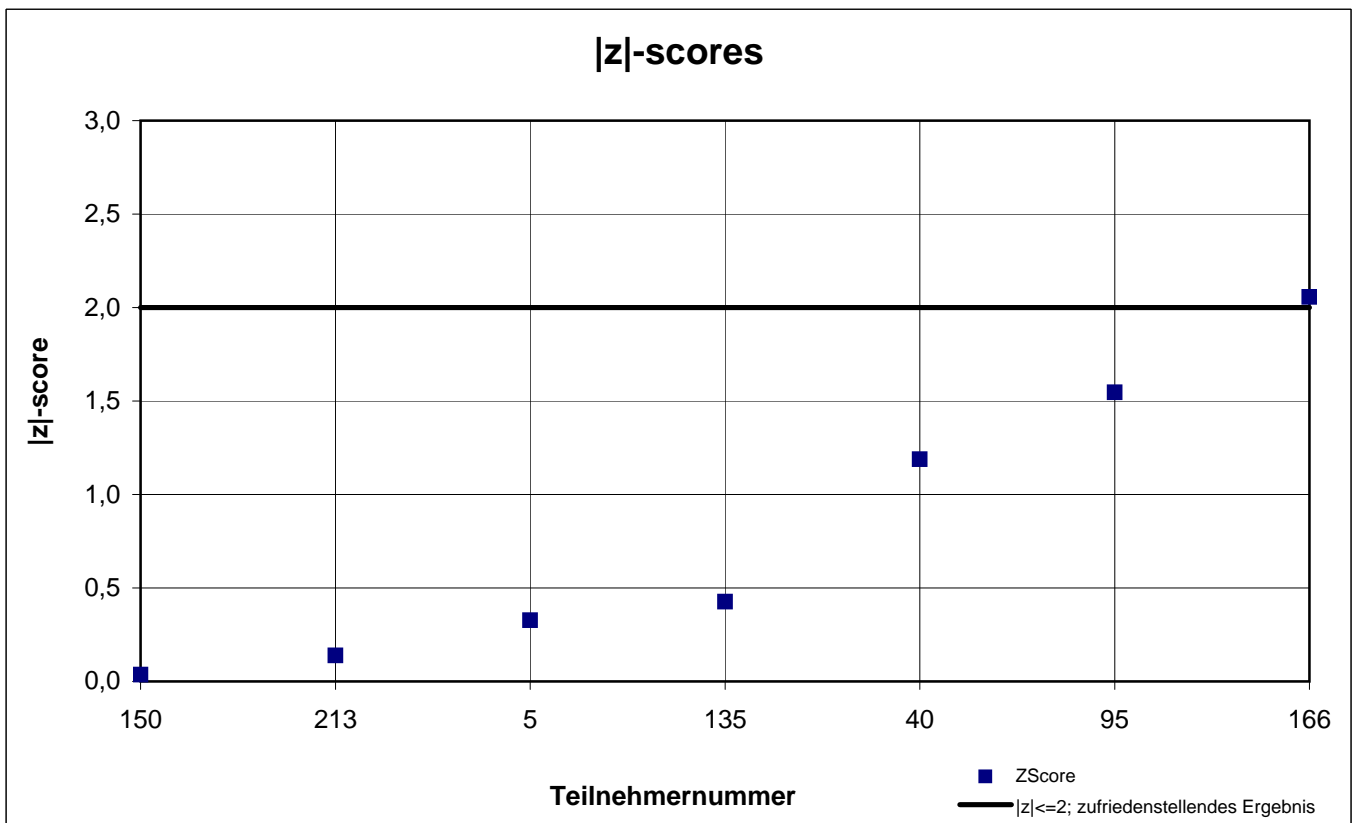
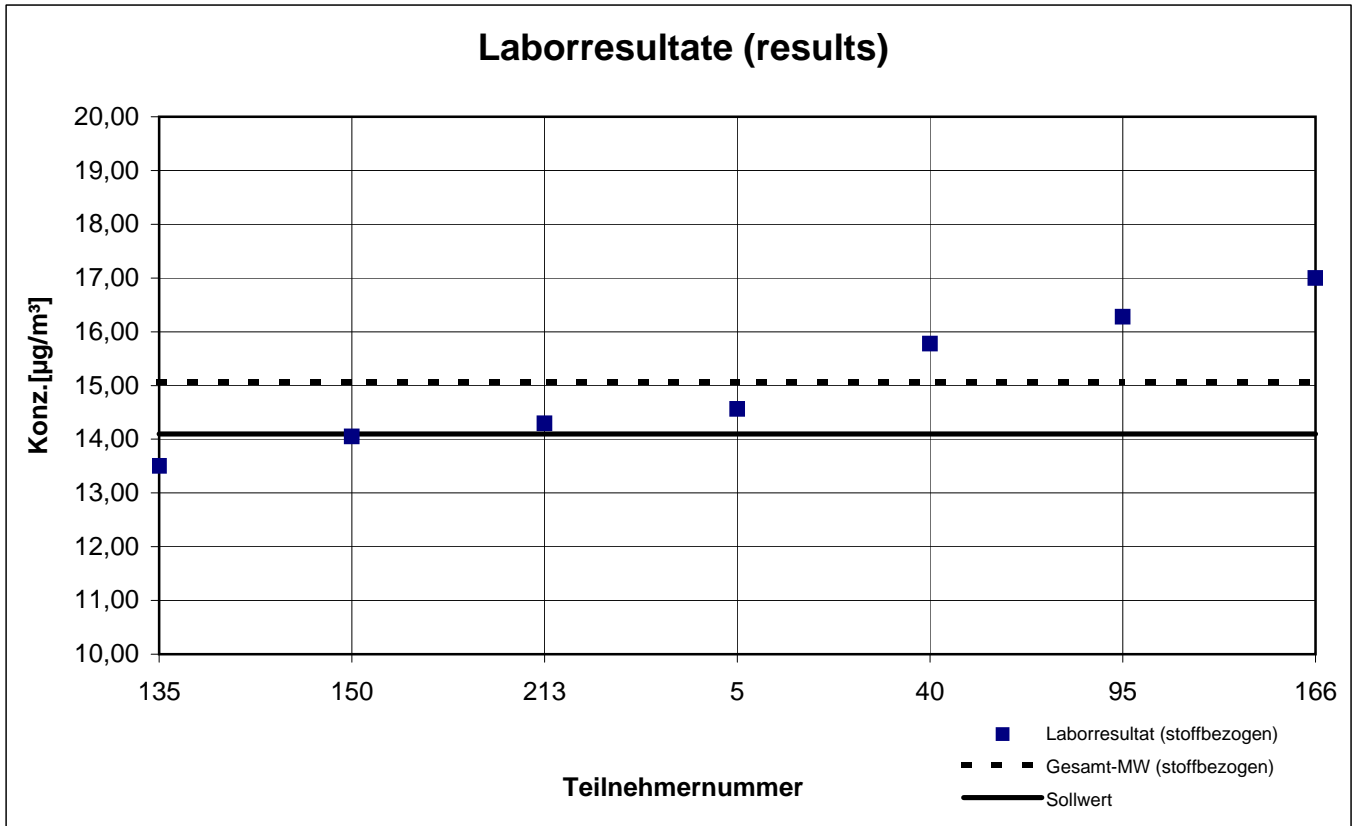
Probe 1 (sample 1)

p-Xylol



Probe 1 (sample 1)

Toluol



Probe 2 - Gesamtauswertung (Teil 1)

Teilnehmer- nummer	1-Butanol		Butylacetat		Ethylbenzol	
	Labor- resultat ($\mu\text{g} / \text{m}^3$)	z - score	Labor- resultat ($\mu\text{g} / \text{m}^3$)	z - score	Labor- resultat ($\mu\text{g} / \text{m}^3$)	z - score
5	37,18	0,6	34,72	0,2	26,86	0,2
40	41,62	0,5	36,35	0,6	29,14	0,6
95	33,72	1,5	37,52	1,0	30,59	1,2
135	23,30	4,1	28,75	1,6	26,75	0,2
150	42,89	0,9	38,91	1,4	27,49	0,0
166	46,00	1,6	38,50	1,3	34,00	2,4
213	23,20	4,1	22,85	3,3	24,15	1,2

	Toluol- äquivalent ($\mu\text{g} / \text{m}^3$)		Toluol- äquivalent ($\mu\text{g} / \text{m}^3$)		Toluol- äquivalent ($\mu\text{g} / \text{m}^3$)	
213	14,75		20,30		30,30	

Die mit gekennzeichneten Felder sind Ausreißer!

	1-Butanol	Butylacetat	Ethylbenzol
Sollwert [$\mu\text{g} / \text{m}^3$]	39,50	34,20	27,40
Standardabweichung S_k [$\mu\text{g} / \text{m}^3$]	4,848	5,981	3,180
rel. Standardabweichung [%]	12,04	17,62	11,19
Gesamtmittelwert c_k [$\mu\text{g} / \text{m}^3$]	40,28	33,94	28,42

Probe 2 - Gesamtauswertung (Teil 2)

Teilnehmer- nummer	n-Heptan		p-Xylol		Toluol	
	Labor- resultat ($\mu\text{g} / \text{m}^3$)	z - score	Labor- resultat ($\mu\text{g} / \text{m}^3$)	z - score	Labor- resultat ($\mu\text{g} / \text{m}^3$)	z - score
5	34,11	0,3	38,28	0,1	33,66	0,1
40	36,80	0,5	42,31	1,1	36,08	0,6
95	37,10	0,5	41,26	0,9	36,74	0,8
135	28,35	1,9	40,25	0,6	30,75	1,0
150	36,01	0,2	35,67	0,6	33,57	0,1
166	47,50	3,5	47,50	2,5	39,00	1,5
213	30,00	1,5	34,25	1,0	37,15	0,9

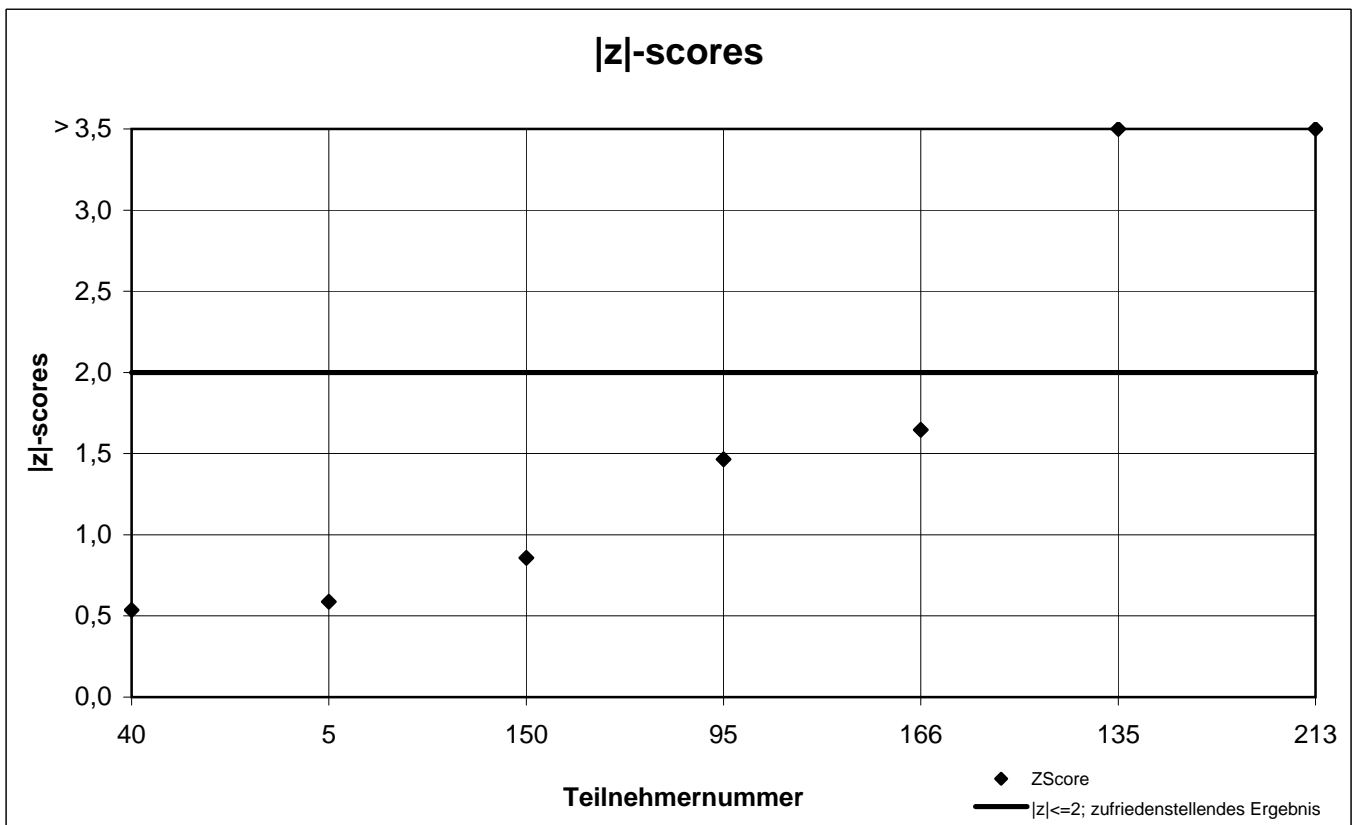
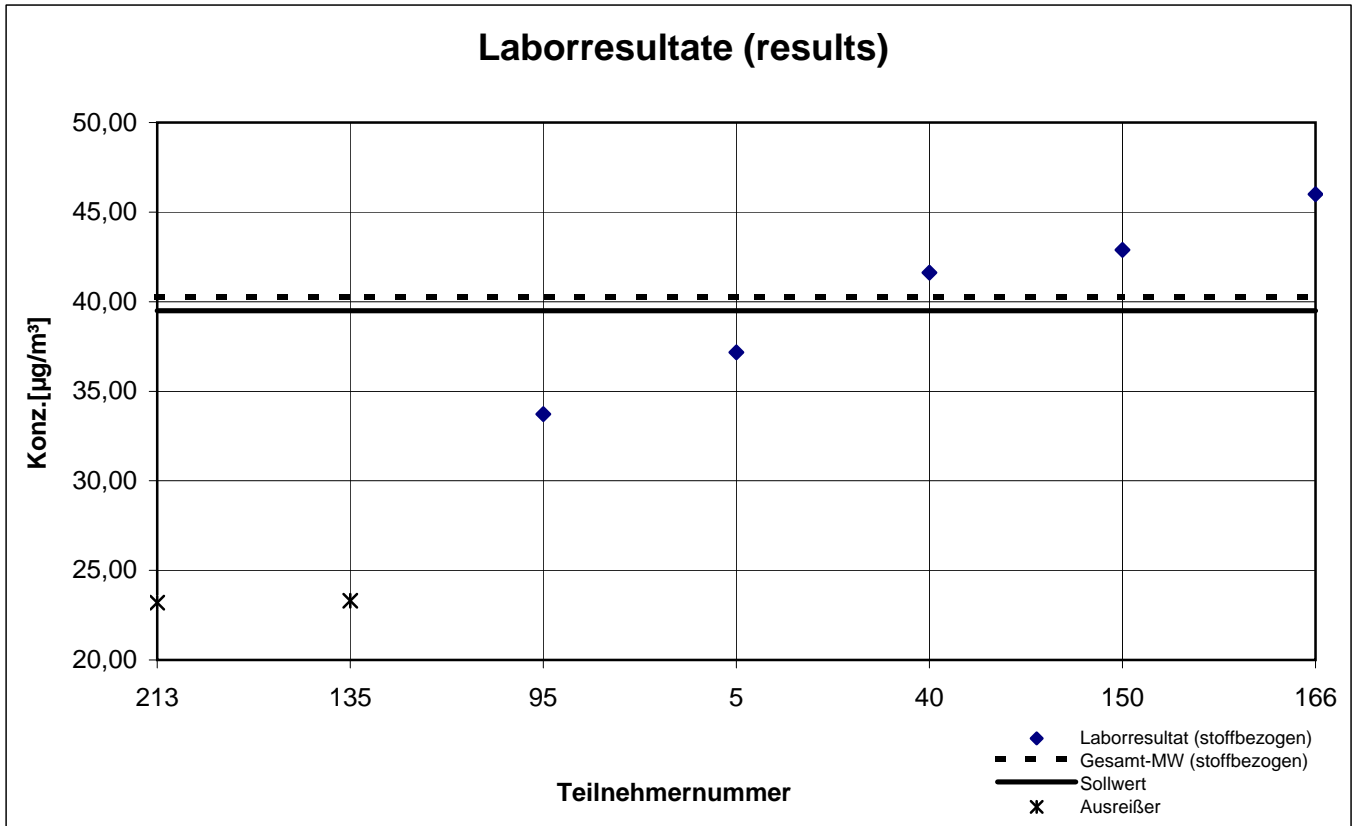
	Toluol- äquivalent ($\mu\text{g} / \text{m}^3$)		Toluol- äquivalent ($\mu\text{g} / \text{m}^3$)	
213	39,80		42,30	

Die mit gekennzeichneten Felder sind Ausreißer!

	n-Heptan	p-Xylol	Toluol
Sollwert [$\mu\text{g} / \text{m}^3$]	35,20	38,00	34,00
Standardabweichung S_k [$\mu\text{g} / \text{m}^3$]	3,714	4,434	2,774
rel. Standardabweichung [%]	11,01	11,10	7,86
Gesamtmittelwert c_k [$\mu\text{g} / \text{m}^3$]	33,73	39,93	35,28

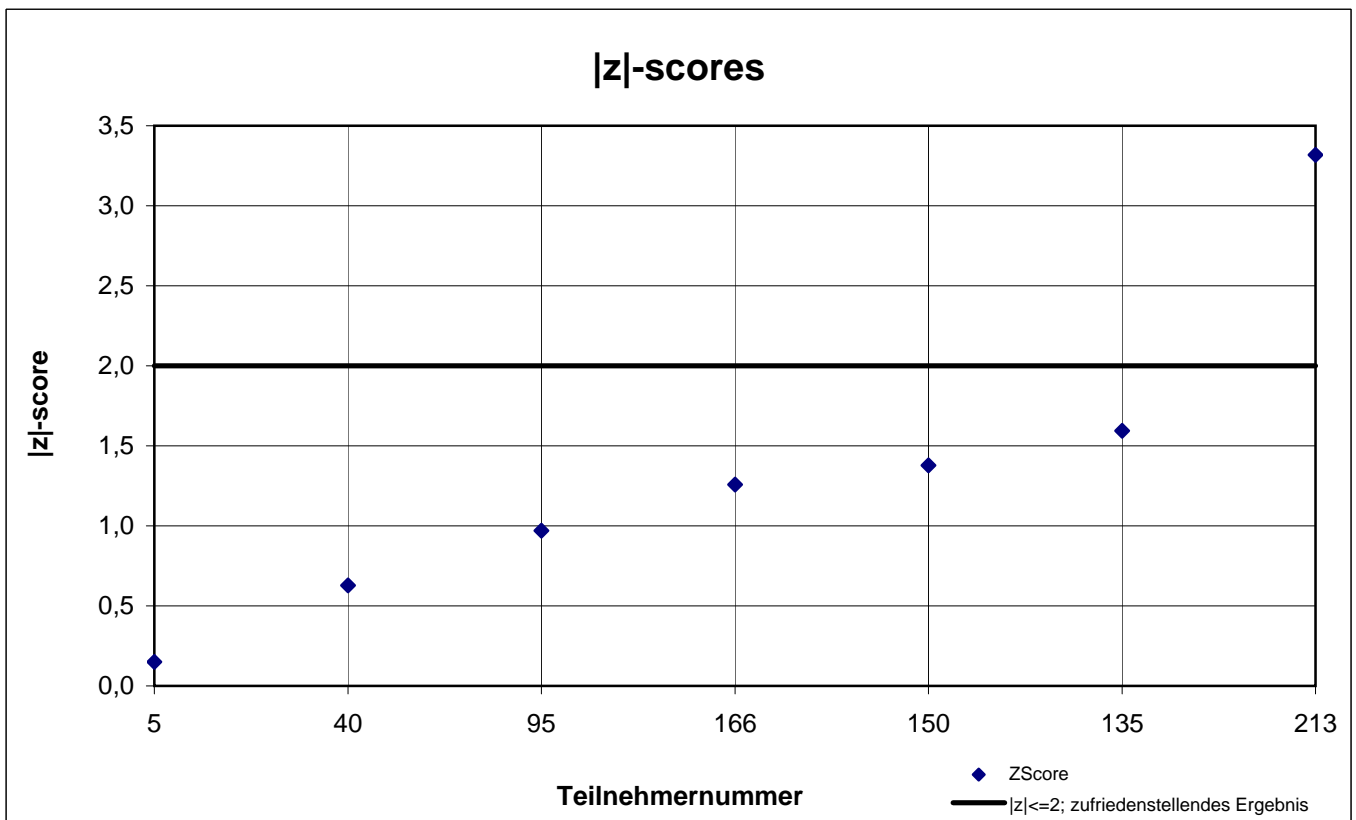
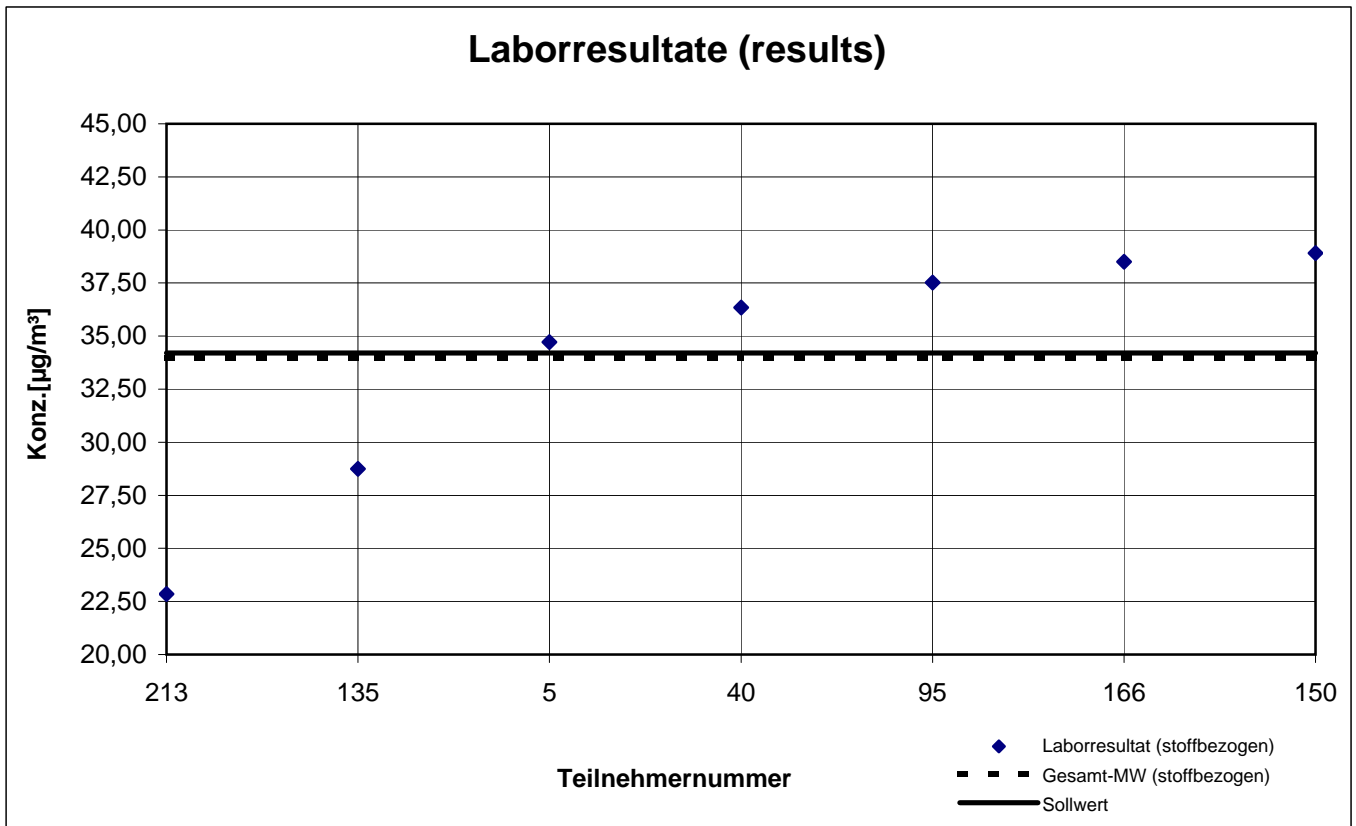
Probe 2 (sample 2)

1-Butanol



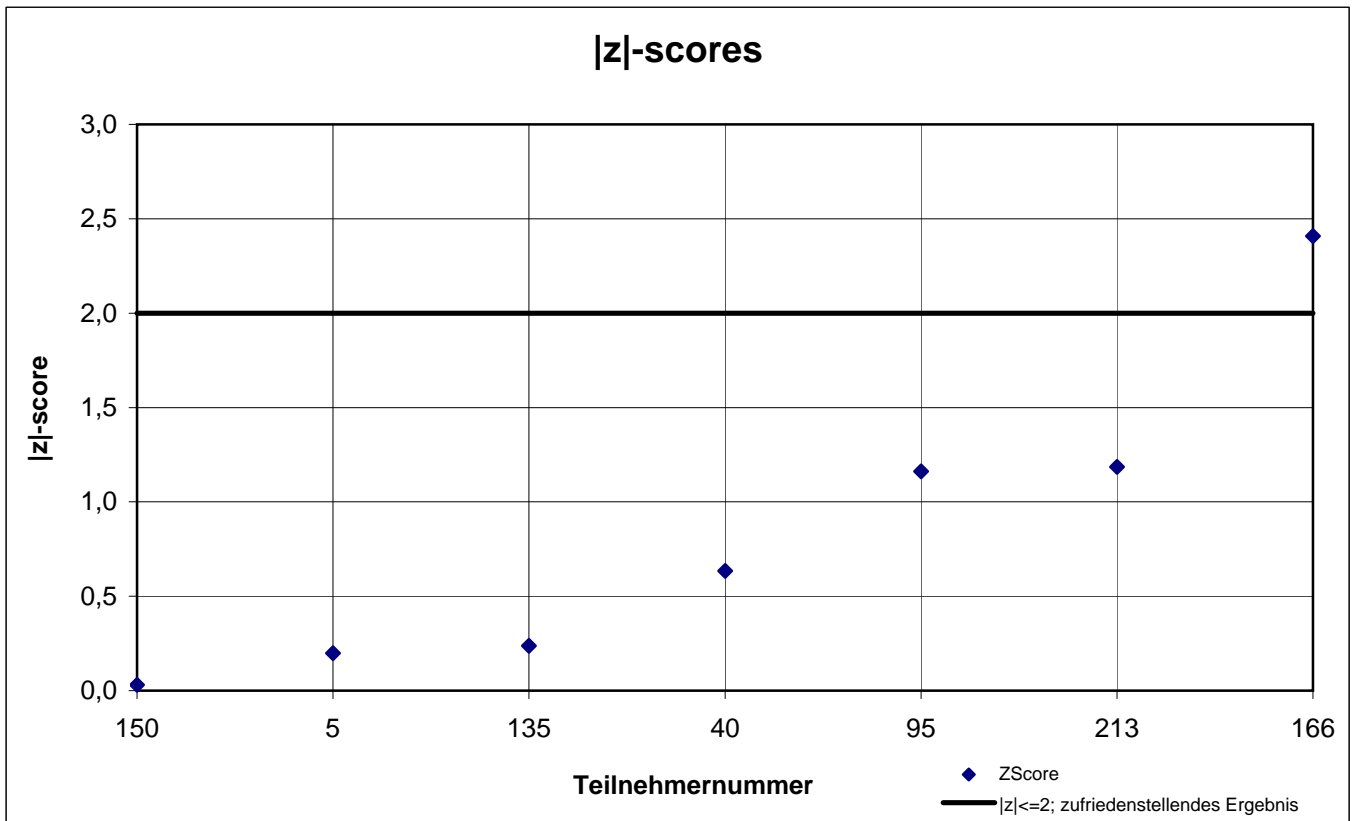
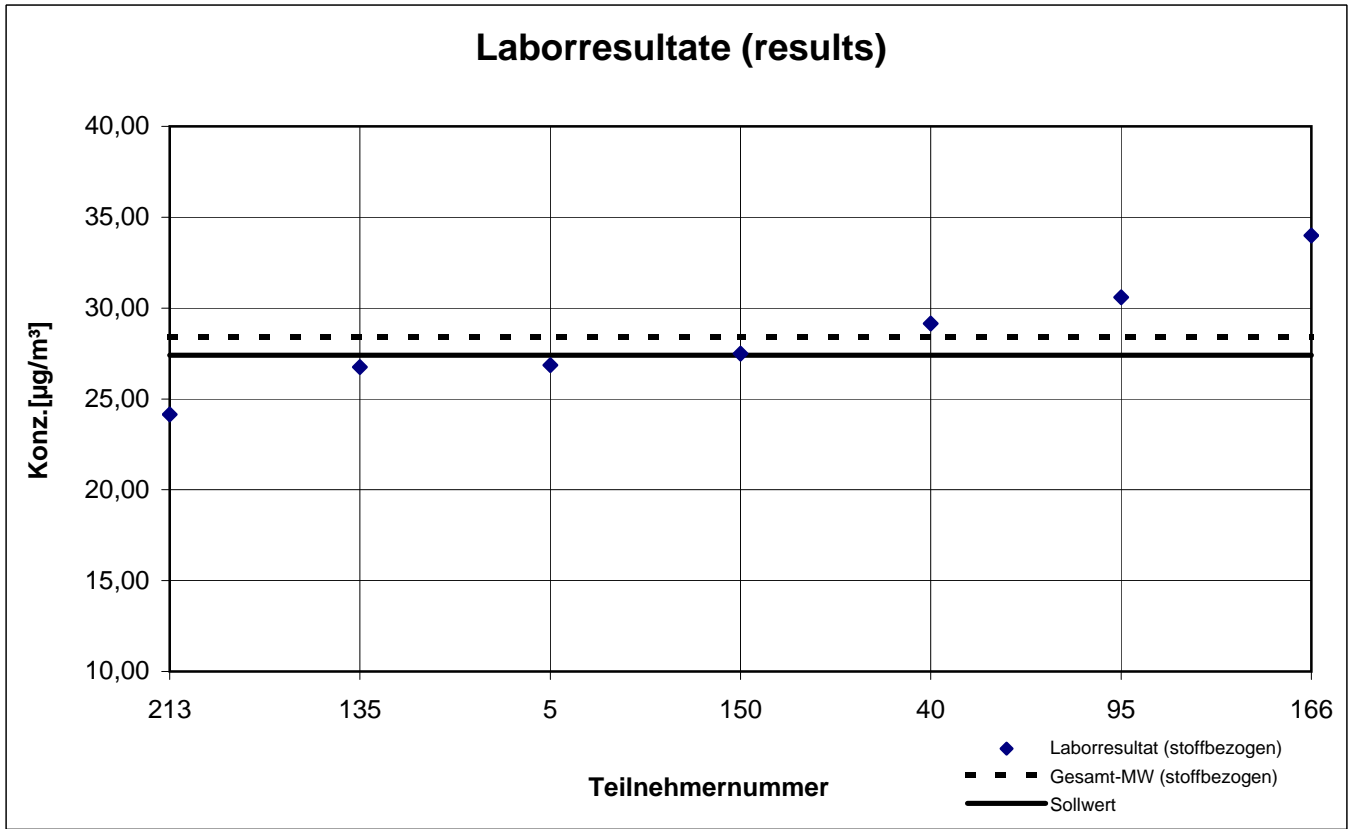
Probe 2 (sample 2)

Butylacetat



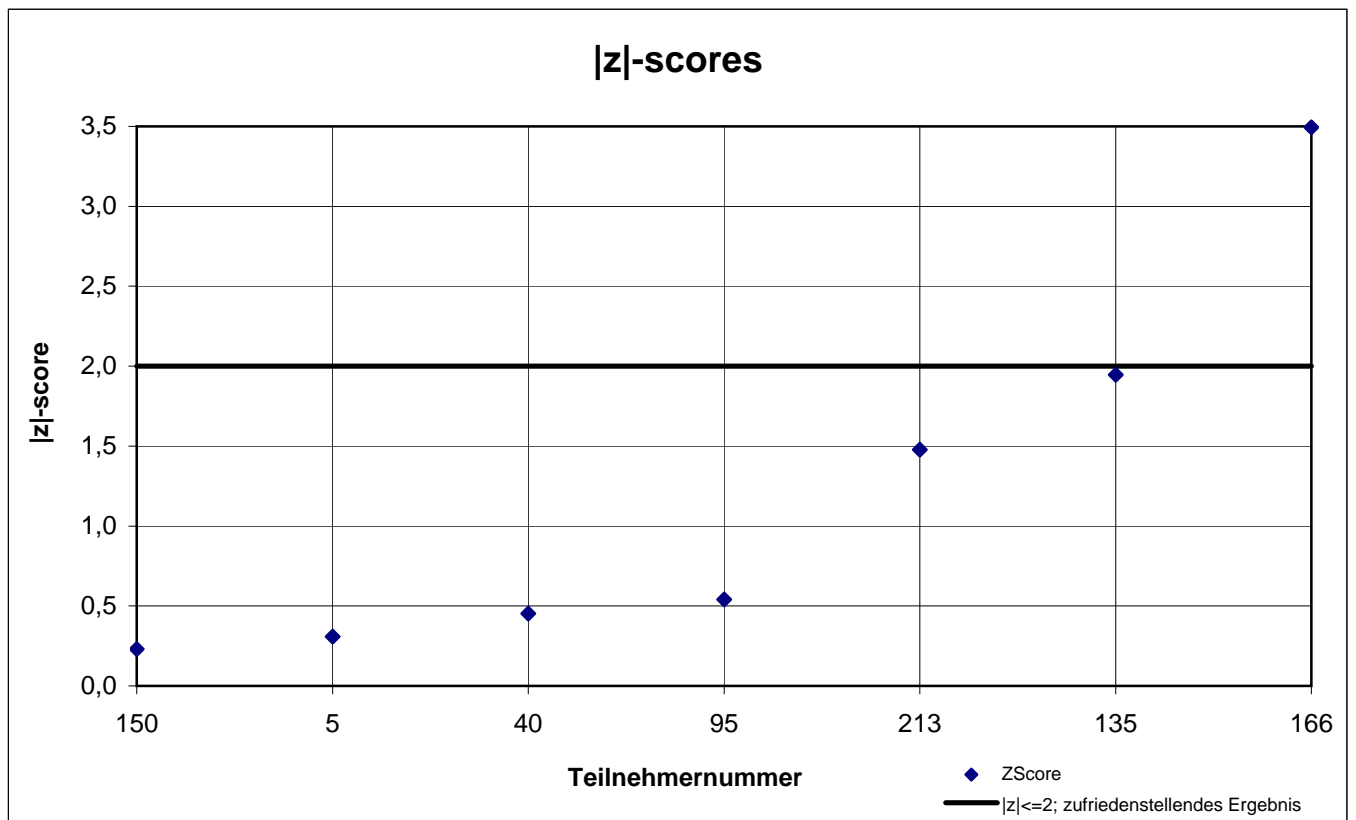
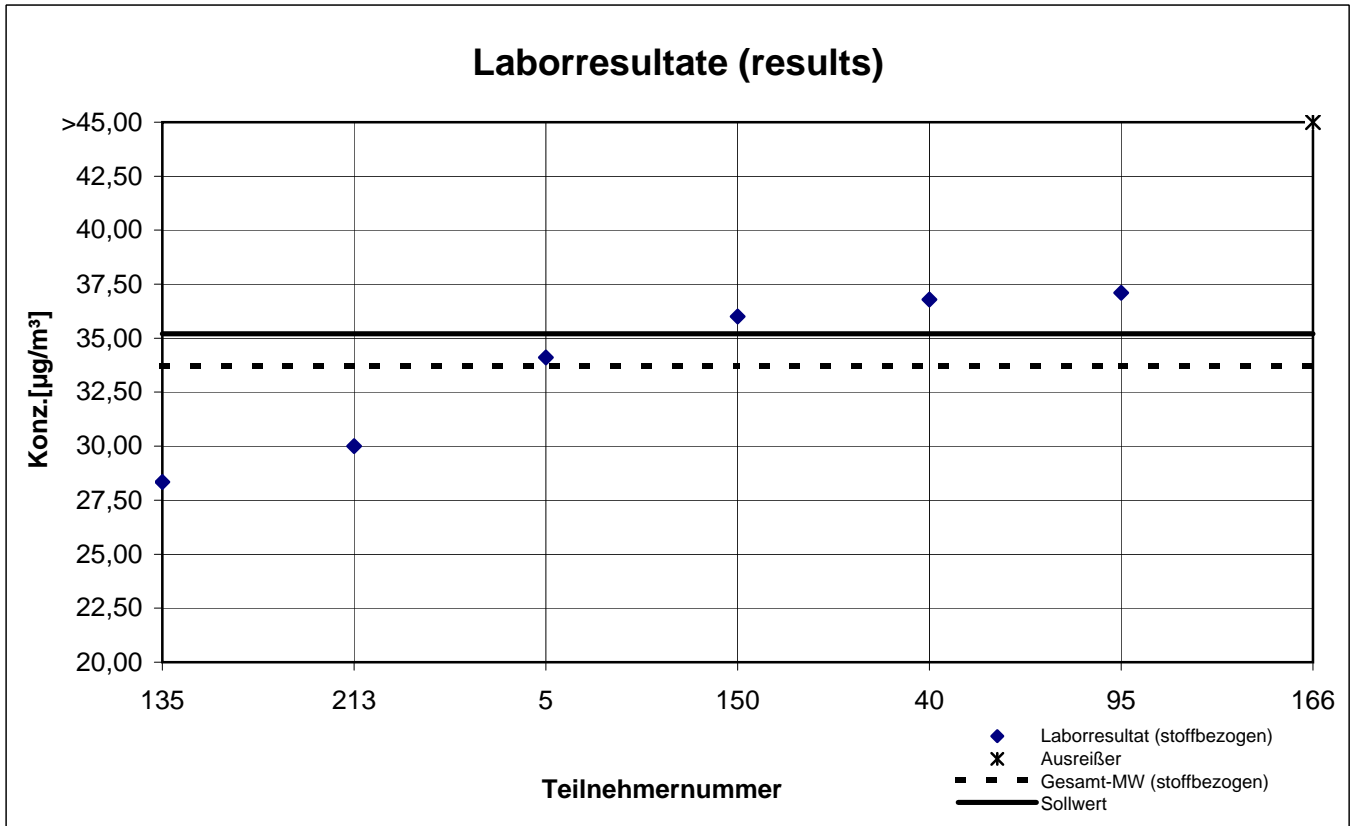
Probe 2 (sample 2)

Ethylbenzol



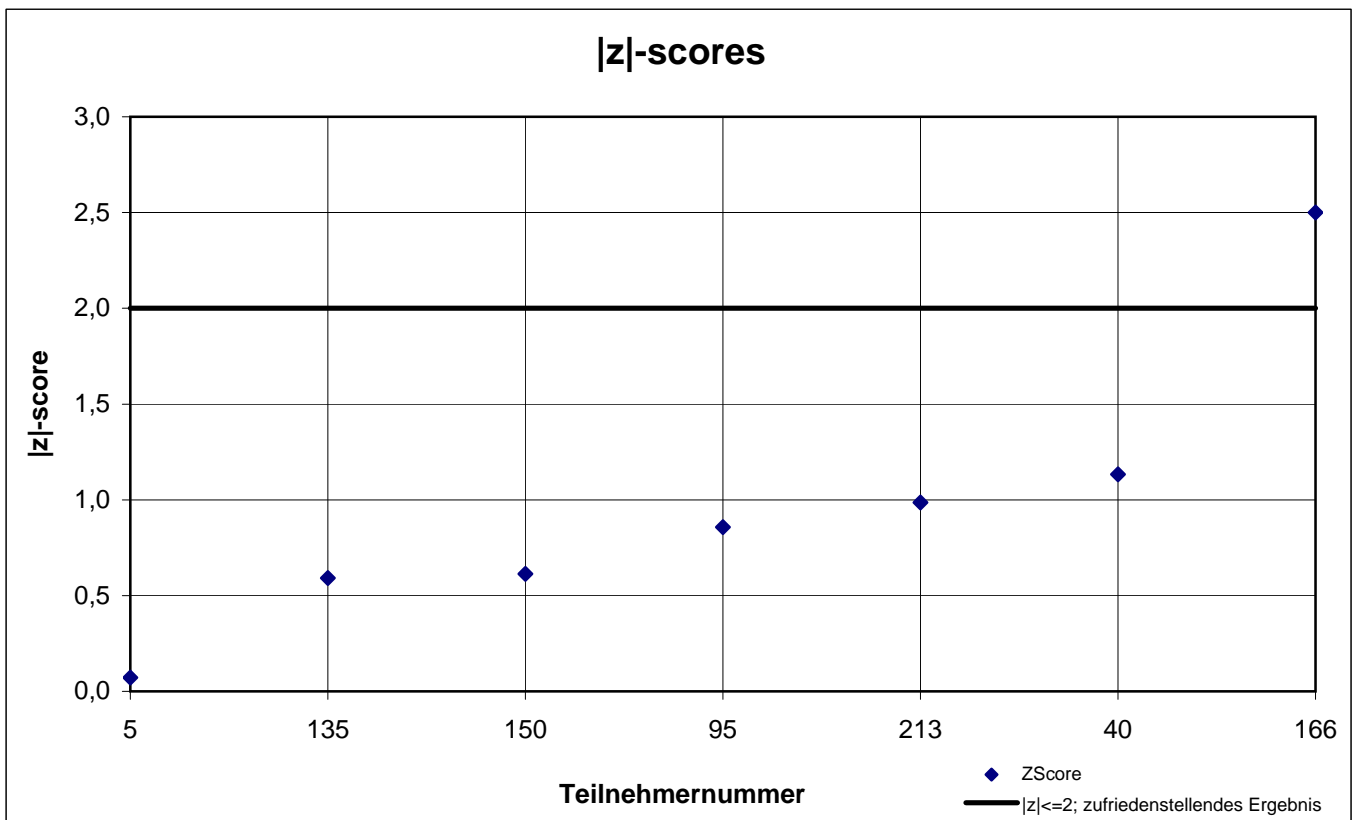
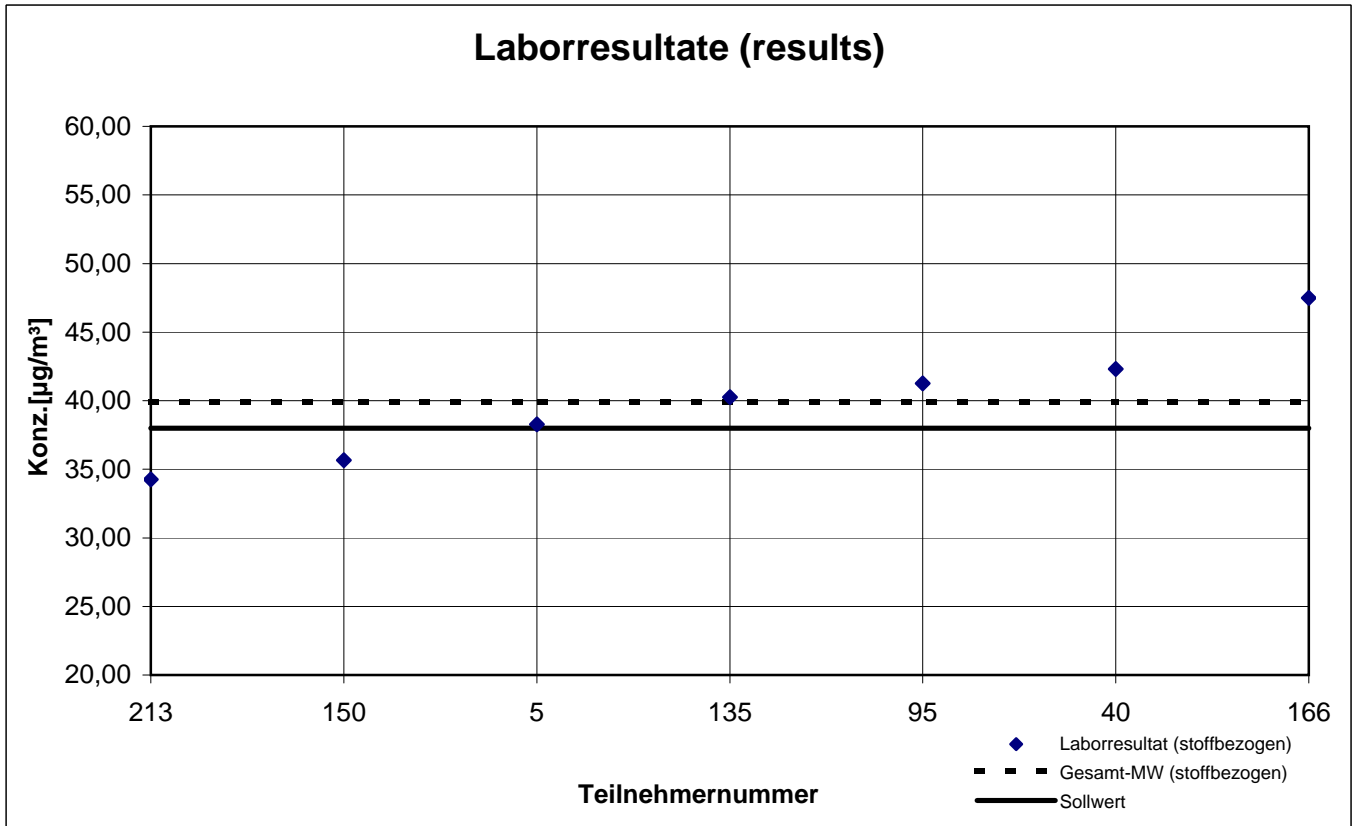
Probe 2 (sample 2)

n-Heptan



Probe 2 (sample 2)

p-Xylol



Probe 2 (sample 2)

Toluol

