

results NIOSH - sample 1

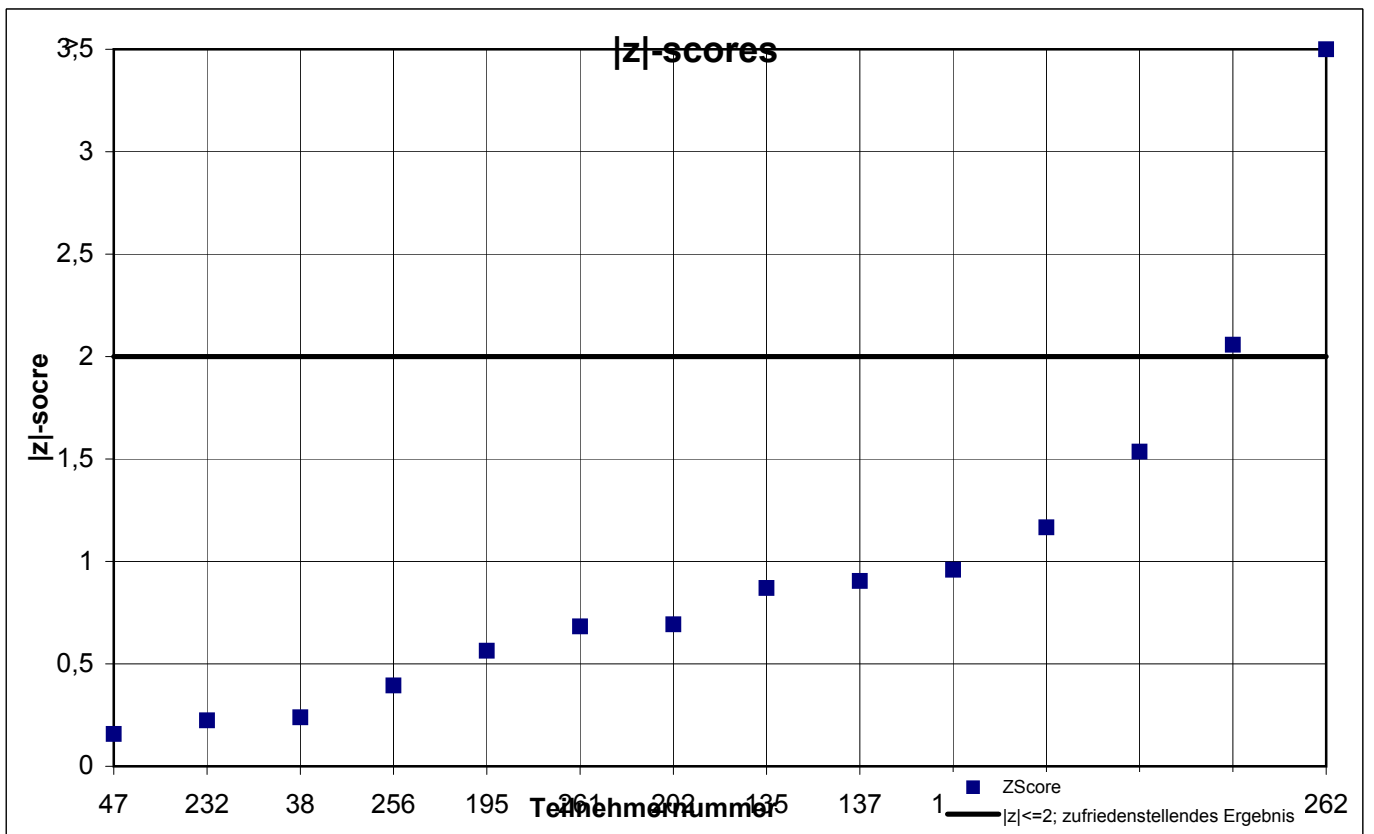
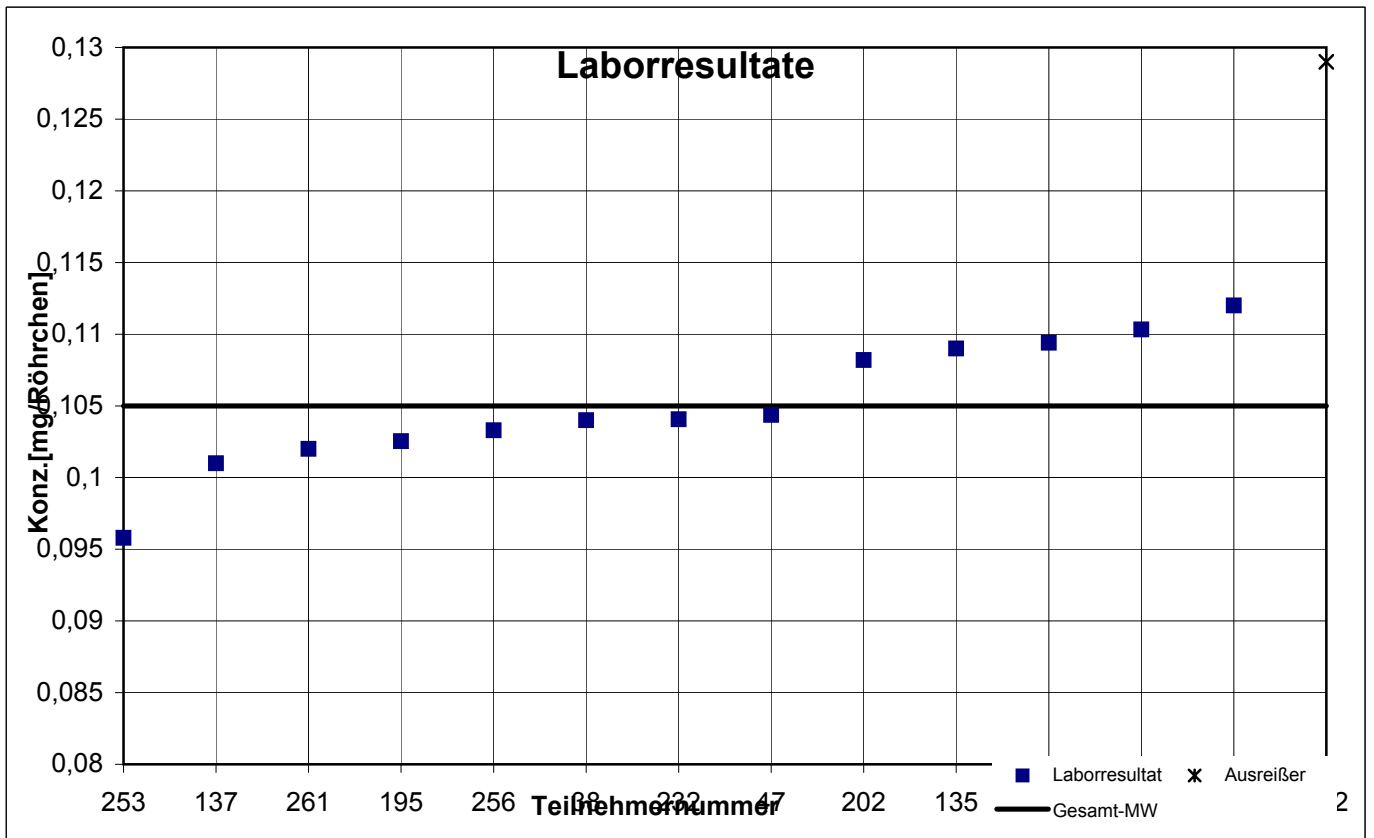
participant number	ethylbenzene		n-heptane		n-propyl acetate	
	result [mg/tube]	z - score	result [mg/tube]	z - score	result [mg/tube]	z - score
38	0,104	0,2	1,890	0,2	k.A.	k.A.
47	0,104	0,2	1,883	0,2	0,513	0,7
68	0,110	1,2	1,877	0,3	0,465	0,6
111	k.A.	k.A.	2,000	0,5	0,485	0,1
118	0,109	1,0	2,040	0,8	0,547	1,6
135	0,109	0,9	1,660	1,6	0,428	1,5
137	0,101	0,9	1,951	0,2	0,497	0,3
156	0,112	1,5	1,914	0,0	0,522	0,9
195	0,103	0,6	2,184	1,7	0,330	4,1
202	0,108	0,7	1,766	0,9	0,441	1,2
232	0,104	0,2	1,855	0,4	0,485	0,0
253	0,096	2,1	1,773	0,9	k.A.	k.A.
256	0,103	0,4	1,871	0,3	k.A.	k.A.
261	0,102	0,7	1,809	0,7	k.A.	k.A.
262	0,129	5,3	2,290	2,3	0,894	10,7

marked fields are outliers!

	ethyl benzene	n-heptane	n-propyl acetate
mean c_k [mg / tube]	0,105	1,918	0,487
standard deviation S_k [mg / tube]	0,0045	0,1613	0,0381
relative standard deviation [%]	4,29	8,41	7,82

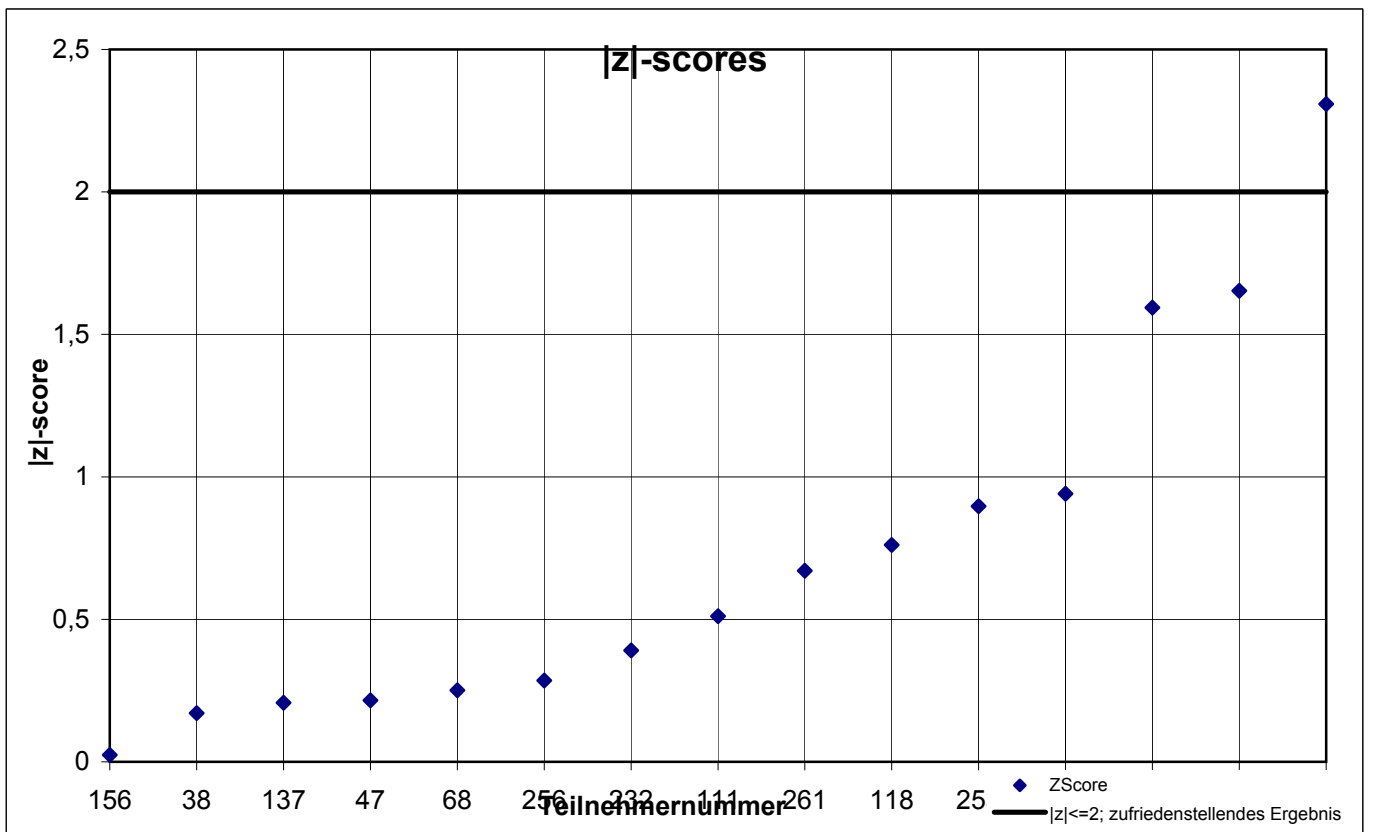
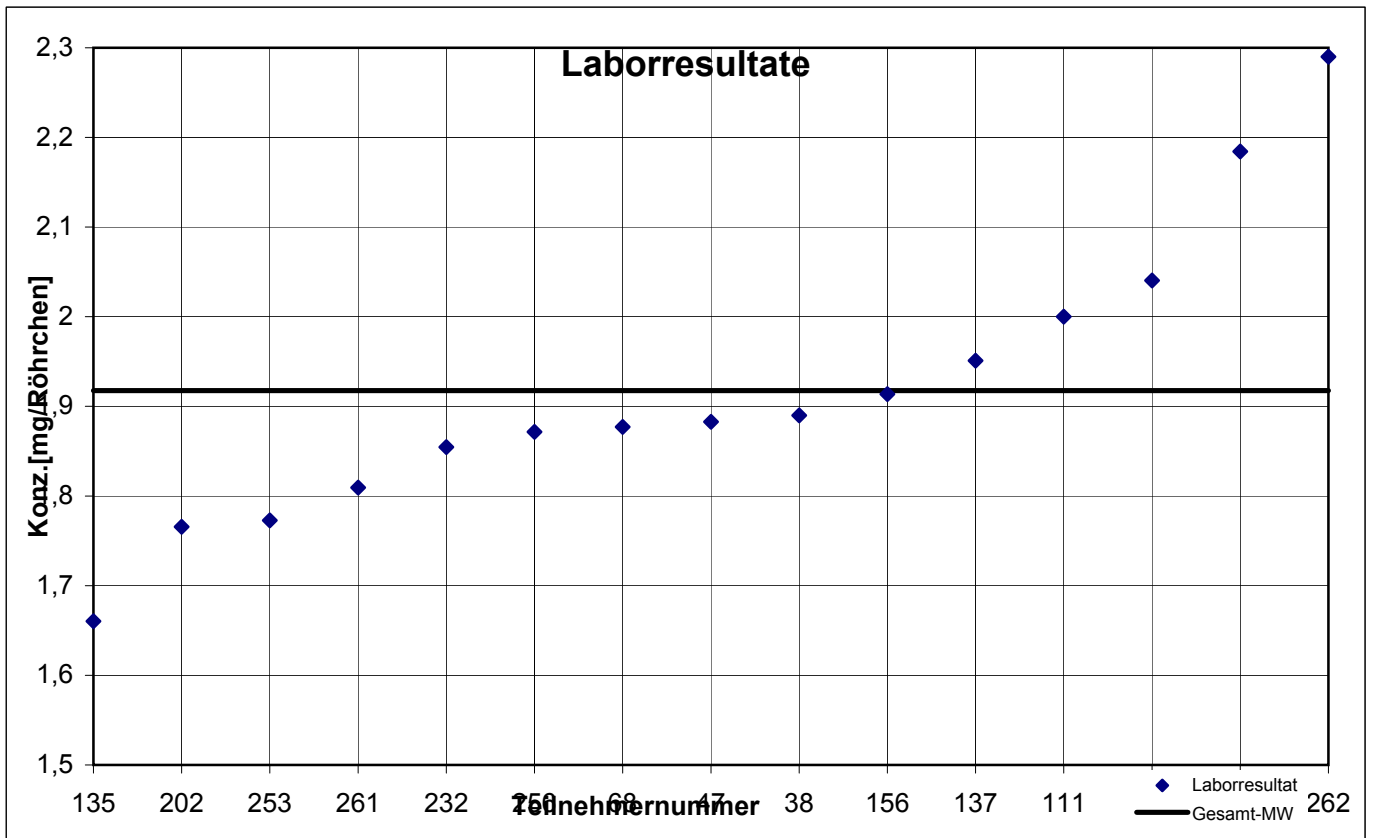
NIOSH - Probe 1

Ethylbenzol



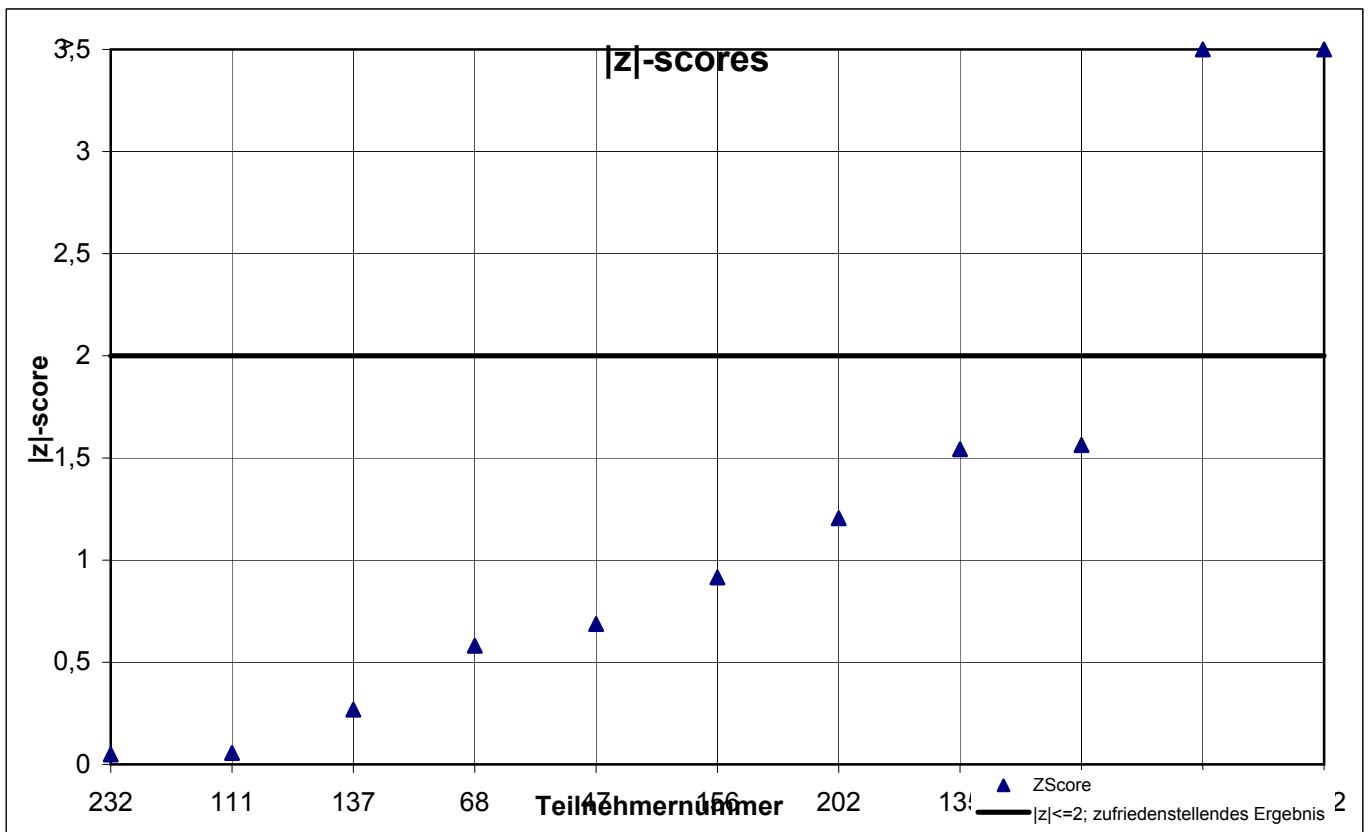
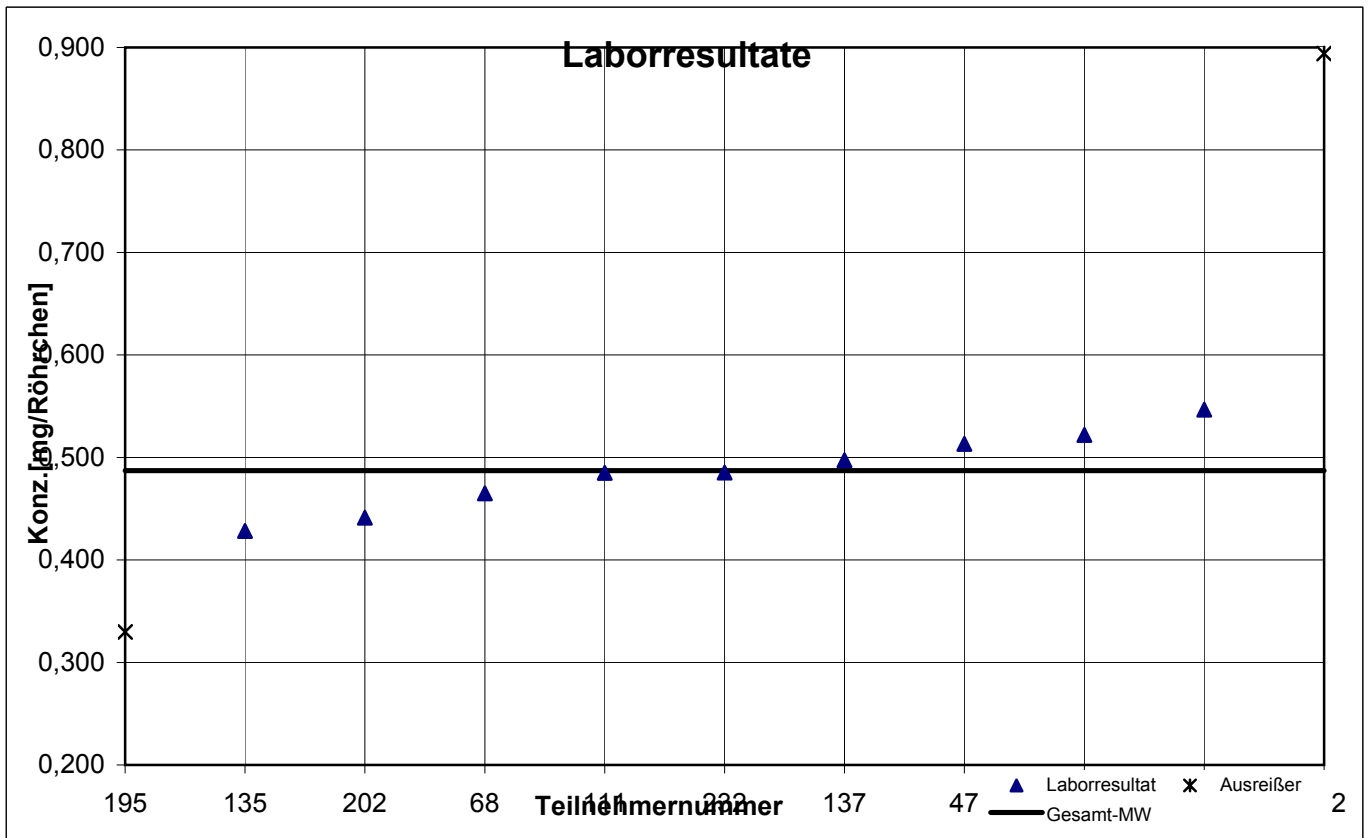
NIOSH - Probe 1

n-Heptan



NIOSH - Probe 1

n-Propylacetat



results NIOSH - sample 2

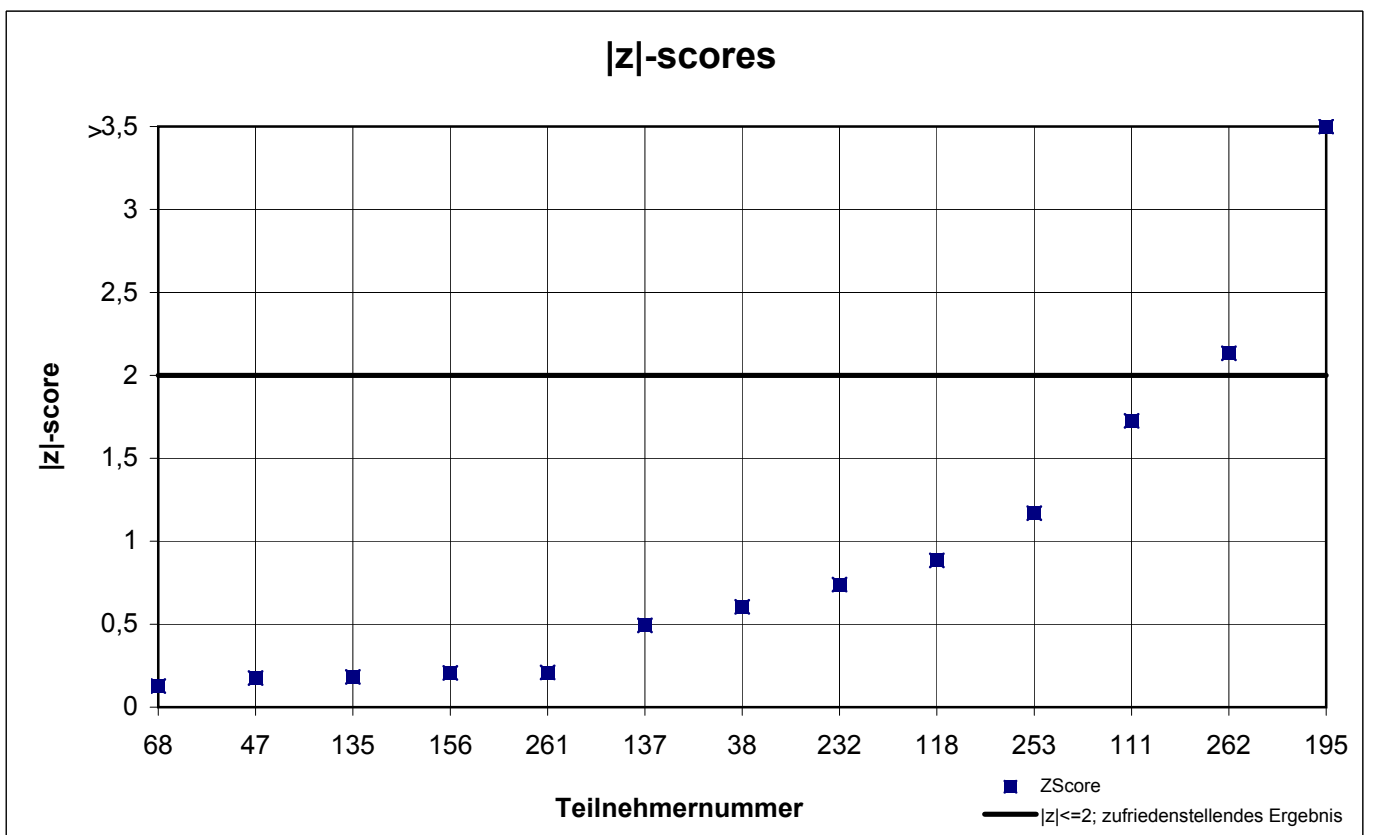
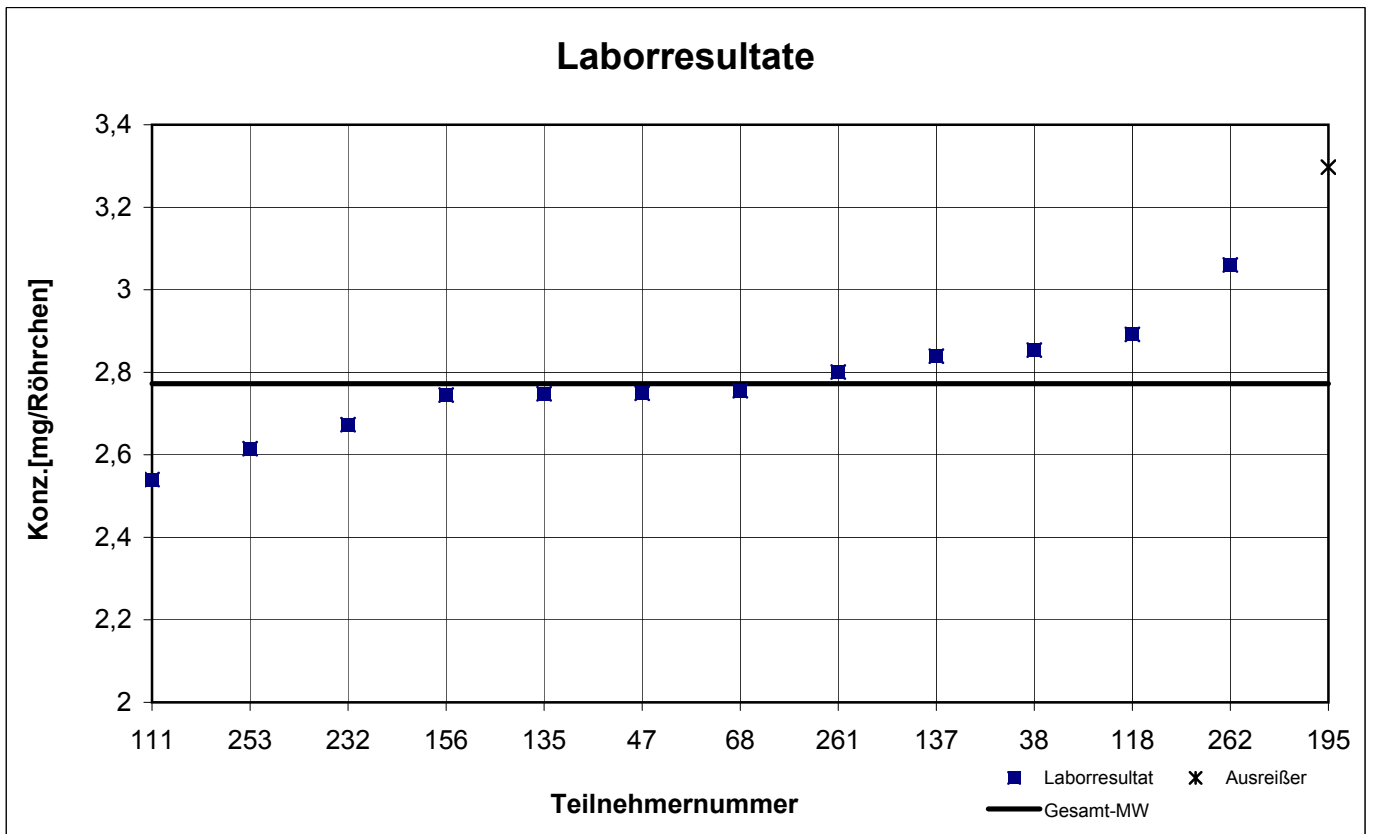
participant number	1,1,1-trichloroethane		ethylbenzene		n-octane		o-xylene	
	result [mg/tube]	z - score	result [mg/tube]	z - score	result [mg/tube]	z - score	result [mg/tube]	z - score
38	2,854	0,6	0,276	0,2	0,551	0,4	0,350	0,5
47	2,749	0,2	0,288	0,5	0,537	0,0	0,343	0,2
68	2,755	0,1	0,285	0,3	0,578	1,2	0,353	0,6
111	2,540	1,7	0,288	0,5	0,500	1,2	0,349	0,4
118	2,892	0,9	0,294	0,9	0,577	1,2	0,374	1,6
135	2,748	0,2	0,285	0,3	0,554	0,5	0,339	0,0
137	2,839	0,5	0,282	0,1	0,541	0,1	0,343	0,2
156	2,745	0,2	0,297	1,1	0,552	0,4	0,353	0,6
195	3,297	3,9	0,256	1,4	0,539	0,0	0,302	1,8
202	k.A.	k.A.	0,302	1,3	k.A.	k.A.	0,332	0,4
232	2,673	0,7	0,276	0,2	0,547	0,3	0,355	0,7
253	2,615	1,2	0,243	2,1	0,461	2,4	0,301	1,8
256	k.A.	k.A.	0,566	16,8	0,948	12,7	0,566	10,7
261	2,801	0,2	0,261	1,1	0,523	0,5	0,319	1,0
262	3,060	2,1	0,348	4,0	0,664	3,9	0,480	6,6

marked fields are outliers!

	1,1,1-tri-chlorethane	ethyl benzene	n-octane	o-xylene
mean c_k [mg / tube]	2,773	0,279	0,538	0,340
standard deviation S_k [mg / tube]	0,1347	0,0170	0,0322	0,0211
relative standard deviation [%]	4,86	6,10	5,99	6,22

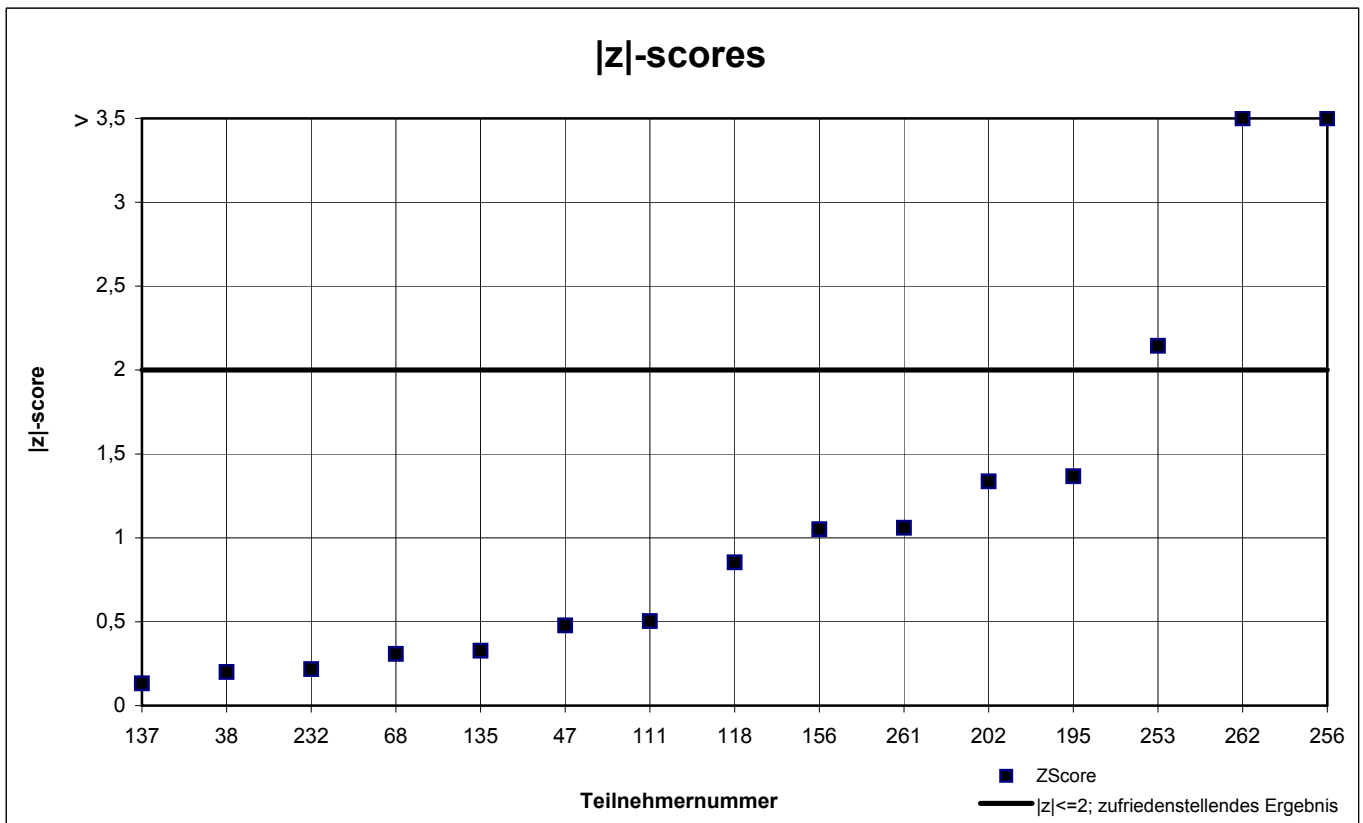
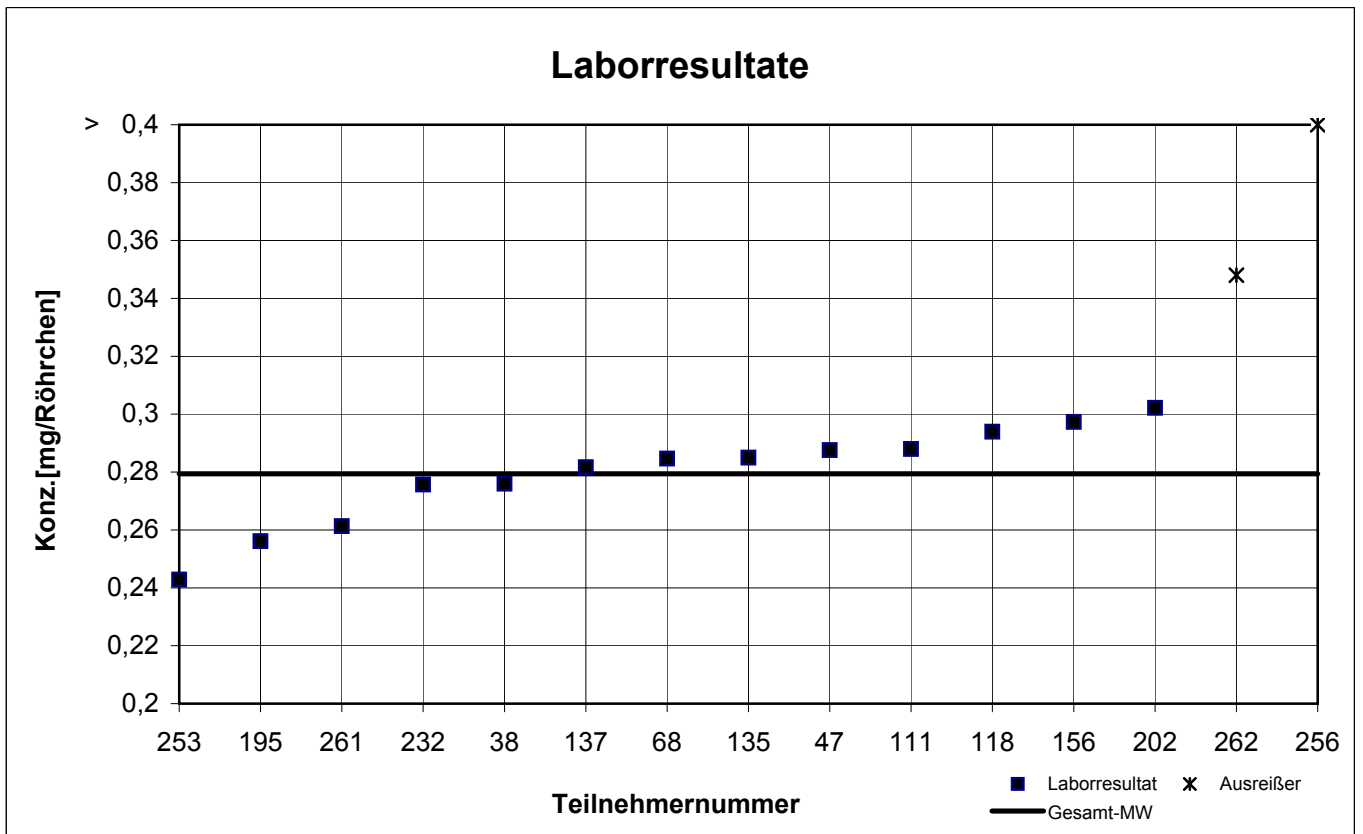
NIOSH - Probe 2

1,1,1-Trichlorethan



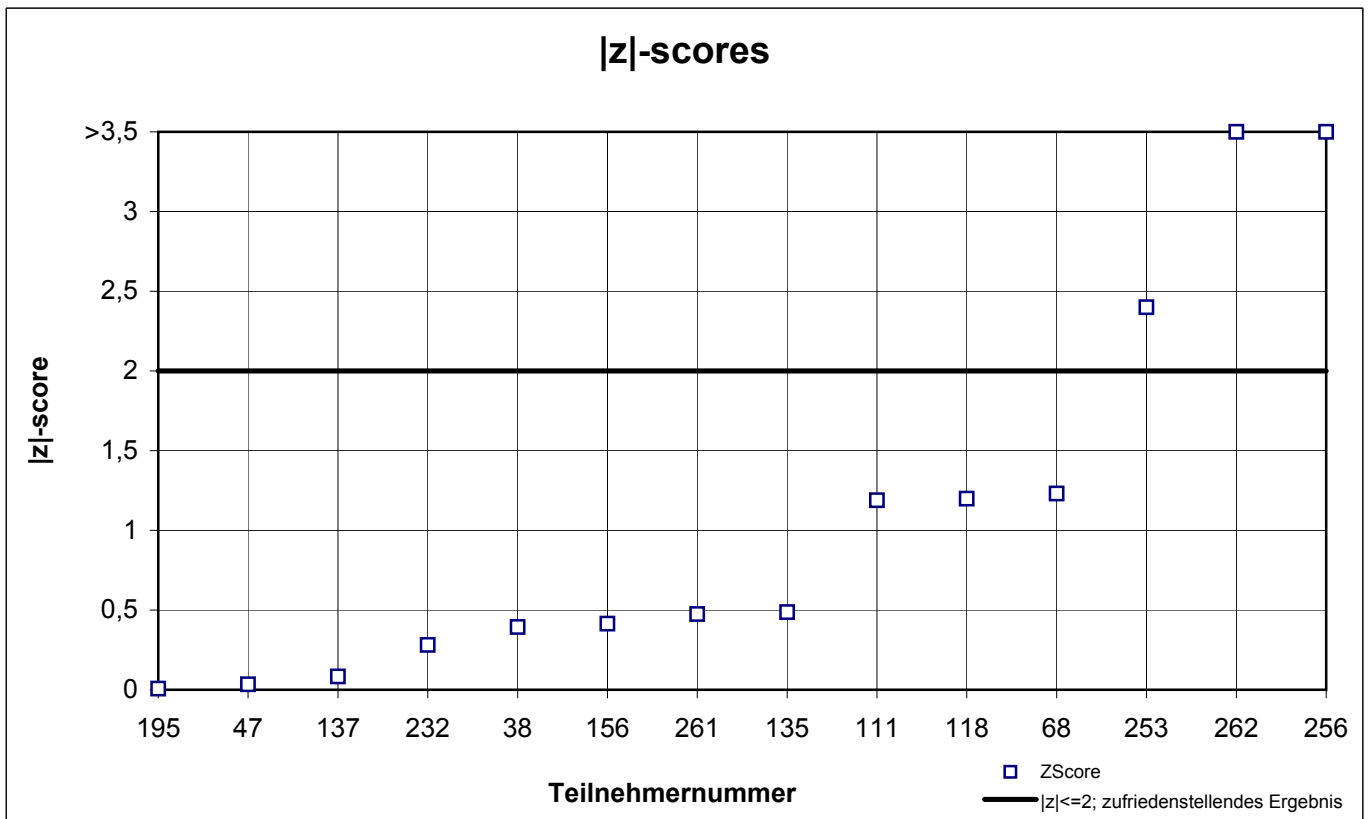
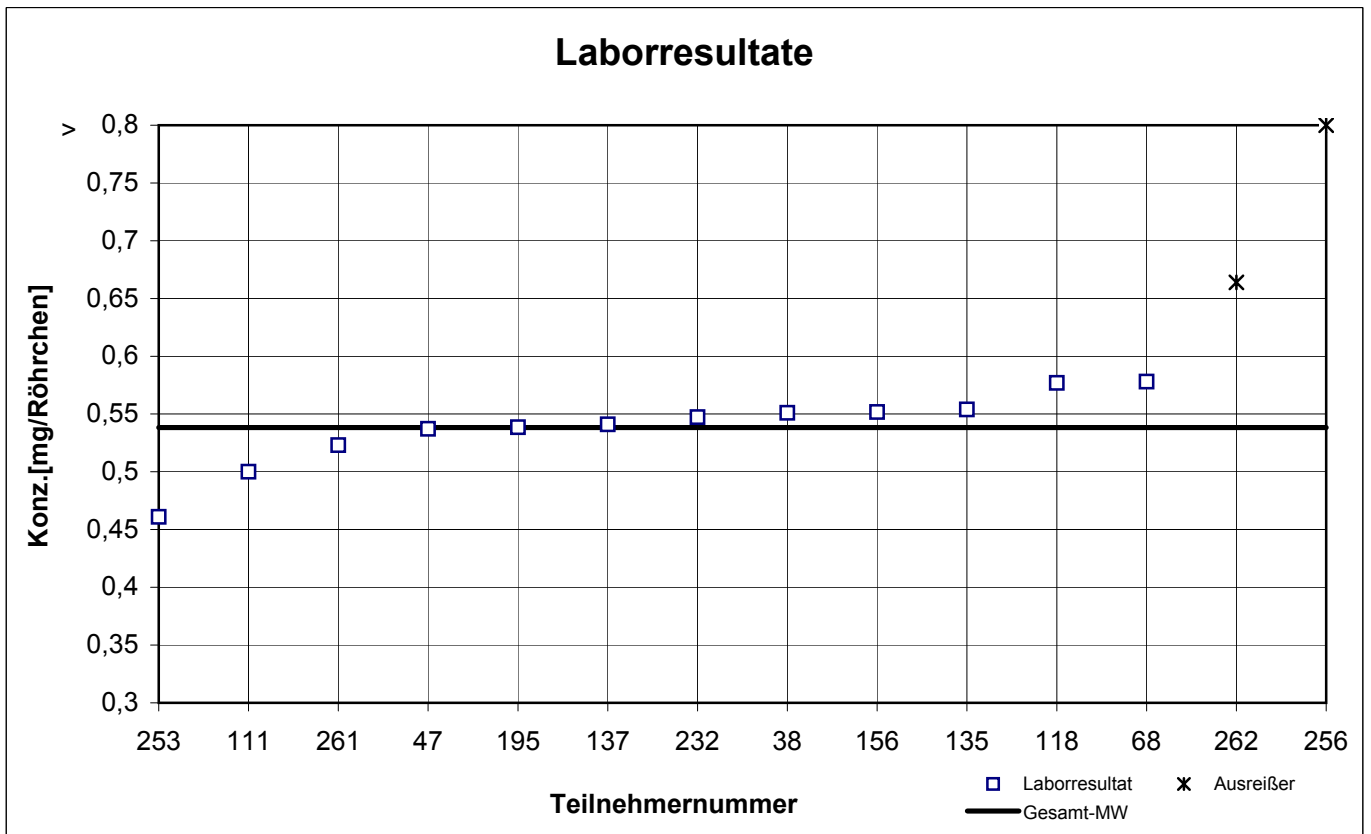
NIOSH - Probe 2

Ethylbenzol



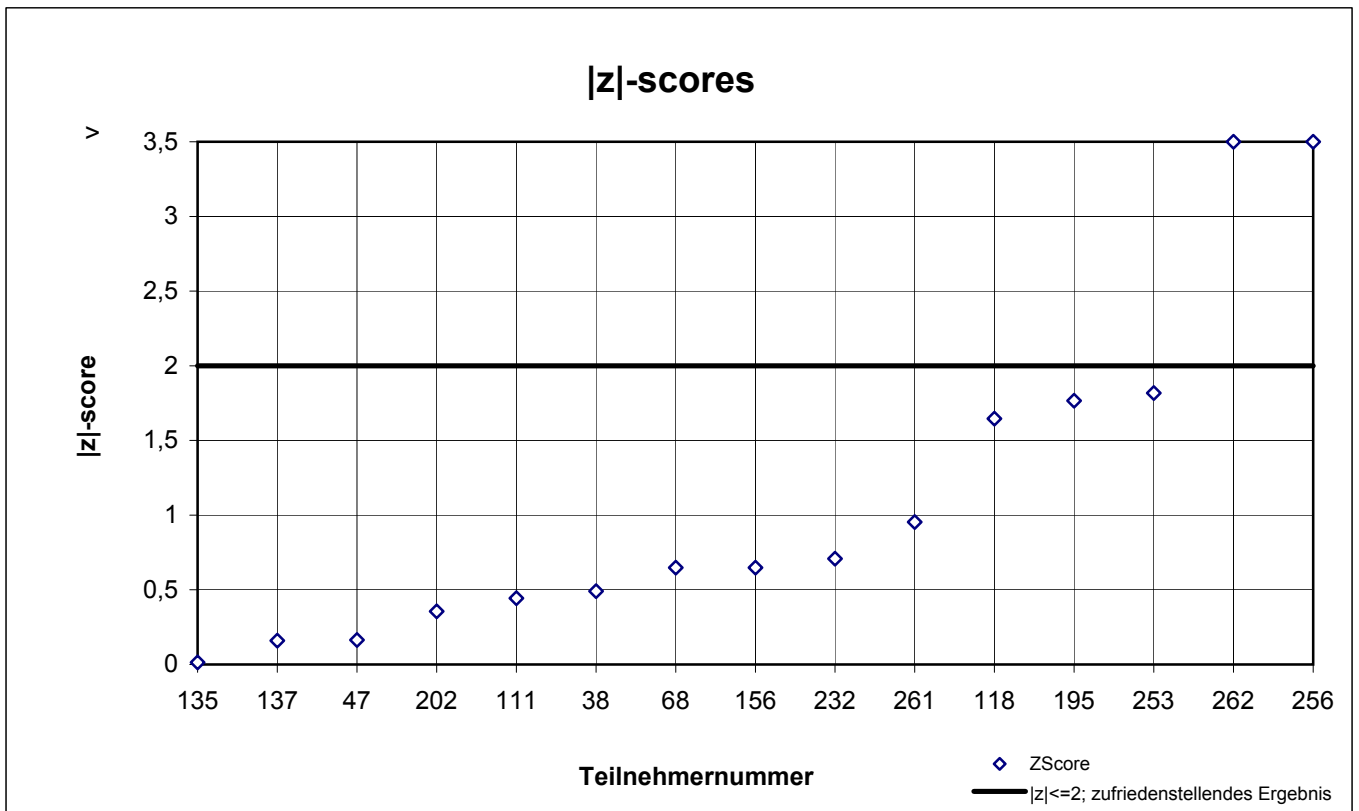
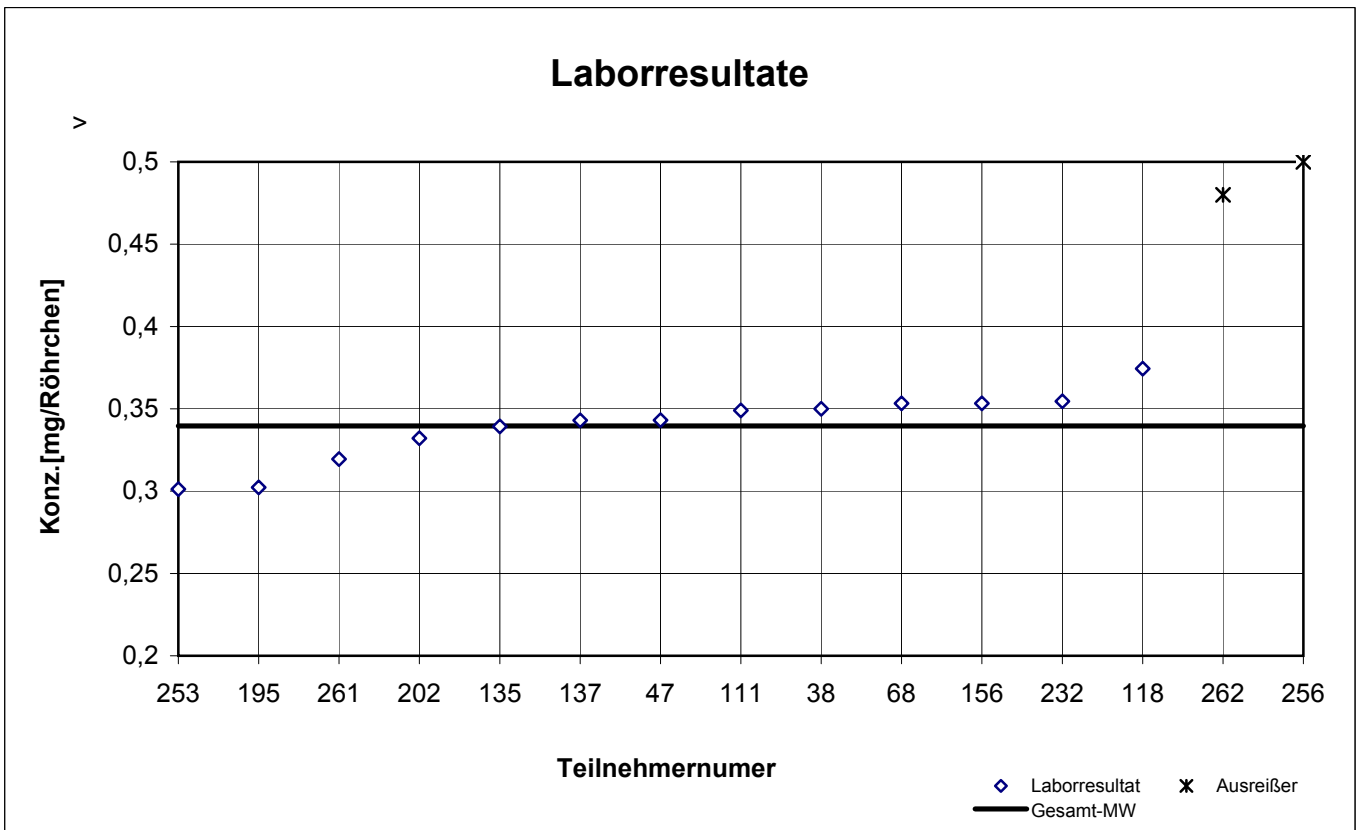
NIOSH - Probe 2

n-Oktan



NIOSH - Probe 2

o-Xylol



results NIOSH - sample 3

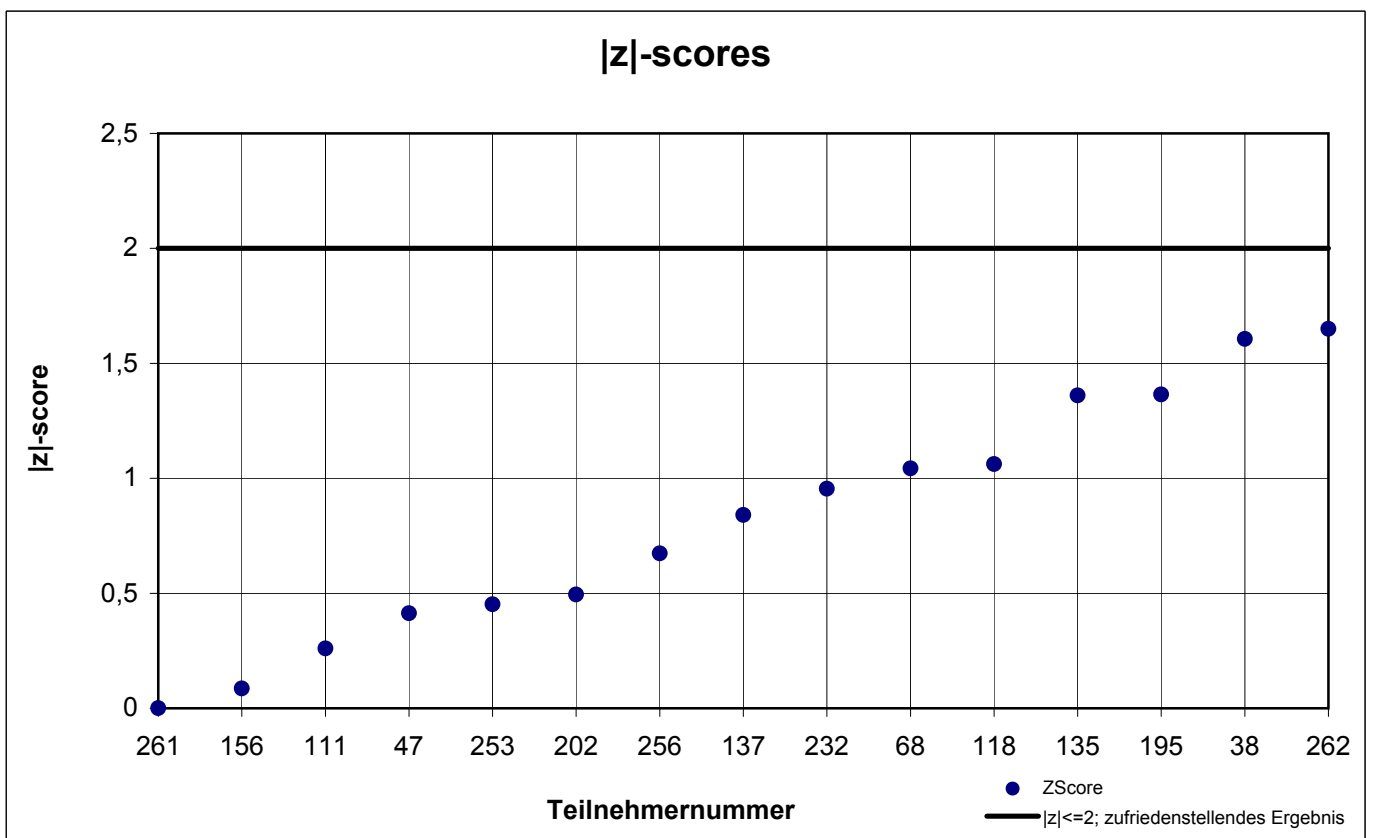
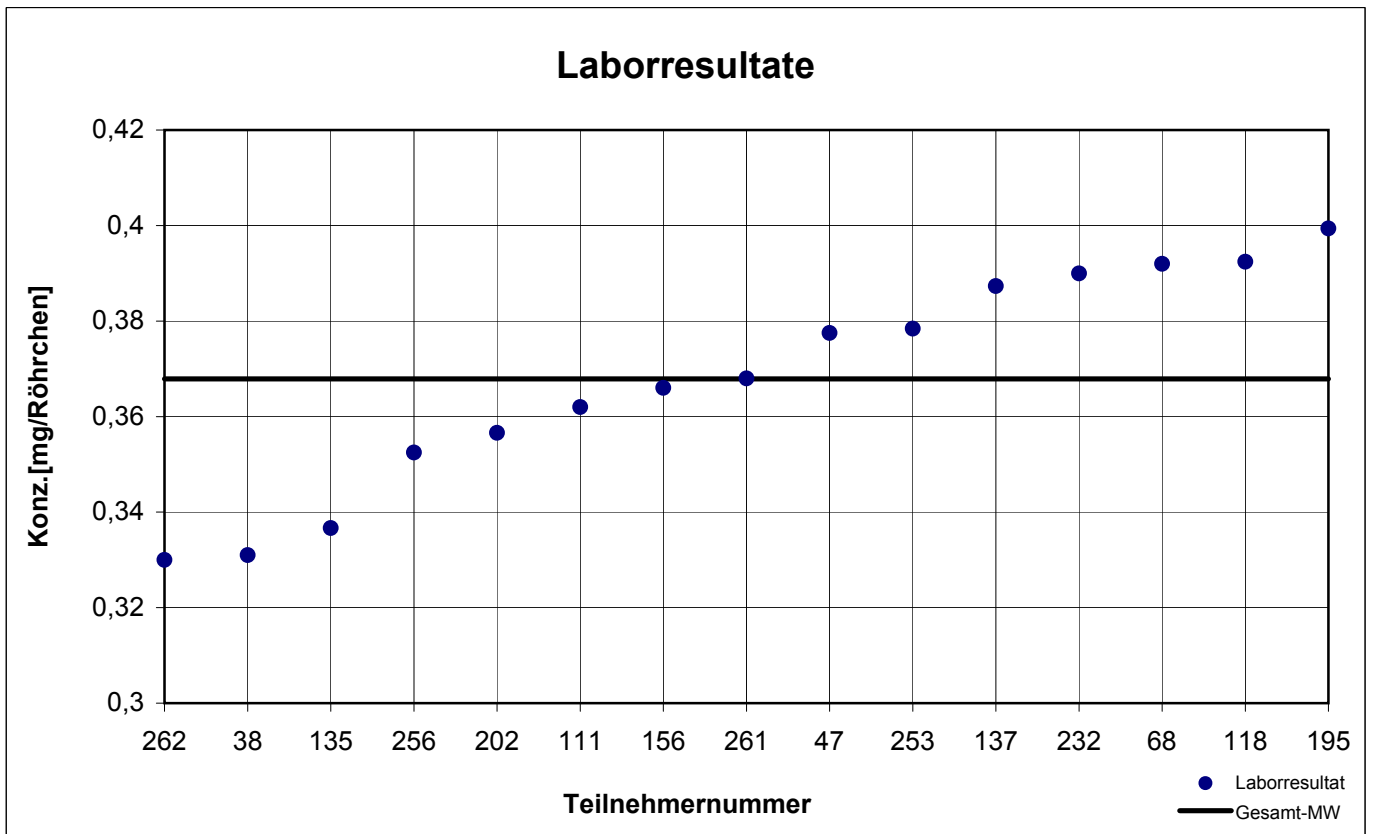
participant number	n-hexane		n-octane		trichloroethene	
	result [mg/tube]	z - score	result [mg/tube]	z - score	result [mg/tube]	z - score
38	0,331	1,6	0,988	0,6	0,245	0,0
47	0,378	0,4	0,964	0,2	0,256	0,8
68	0,392	1,0	1,006	1,0	0,247	0,2
111	0,362	0,3	0,958	0,1	0,256	0,8
118	0,392	1,1	1,010	1,1	0,255	0,7
135	0,337	1,4	0,902	1,0	0,255	0,7
137	0,387	0,8	0,933	0,4	0,252	0,5
156	0,366	0,1	0,969	0,3	0,243	0,1
195	0,399	1,4	0,966	0,2	0,221	1,7
202	0,357	0,5	k.A.	k.A.	0,214	2,2
232	0,390	1,0	0,957	0,1	0,244	0,1
253	0,378	0,5	0,831	2,3	0,235	0,7
256	0,352	0,7	0,899	1,0	k.A.	k.A.
261	0,368	0,0	0,935	0,4	k.A.	k.A.
262	0,330	1,6	1,040	1,6	0,262	1,2

marked fields are outliers!

	n-hexane	n-octane	trichloroethene
mean c_k [mg / tube]	0,368	0,954	0,245
standard deviation S_k [mg / tube]	0,0230	0,0530	0,0142
relative standard deviation [%]	6,26	5,56	5,83

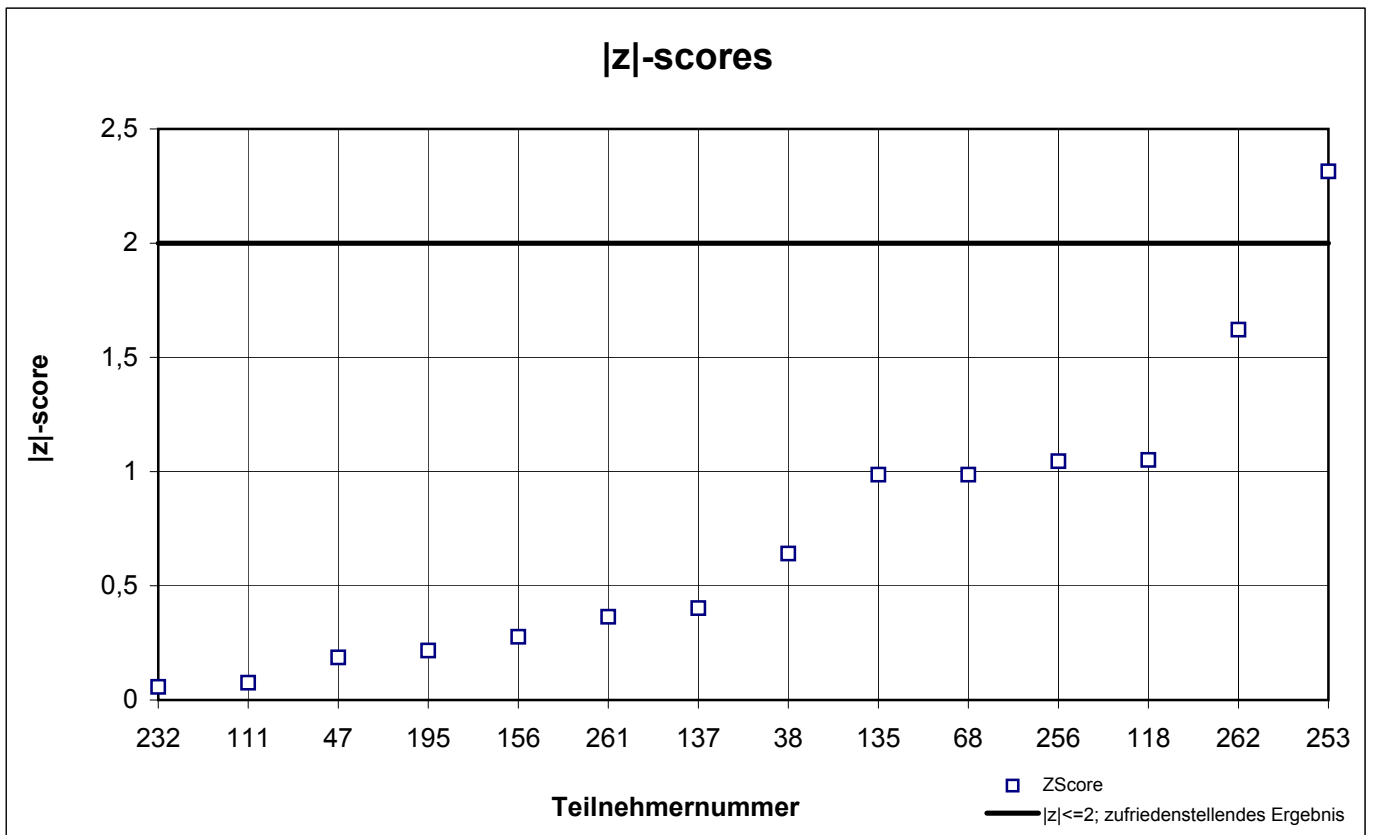
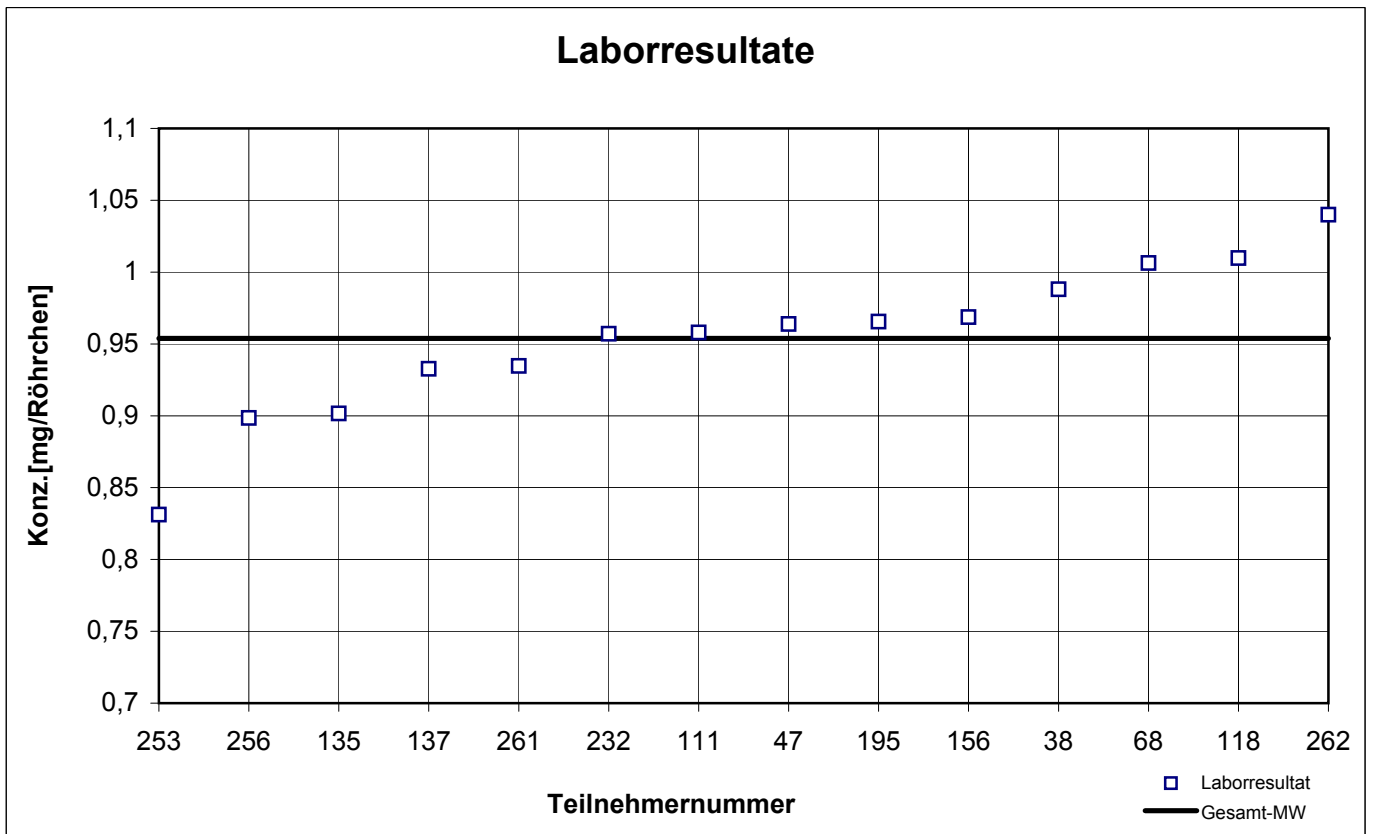
NIOSH - Probe 3

n-Hexan



NIOSH - Probe 3

n-Oktan



NIOSH - Probe 3

Trichlorethen

