

results sample 1

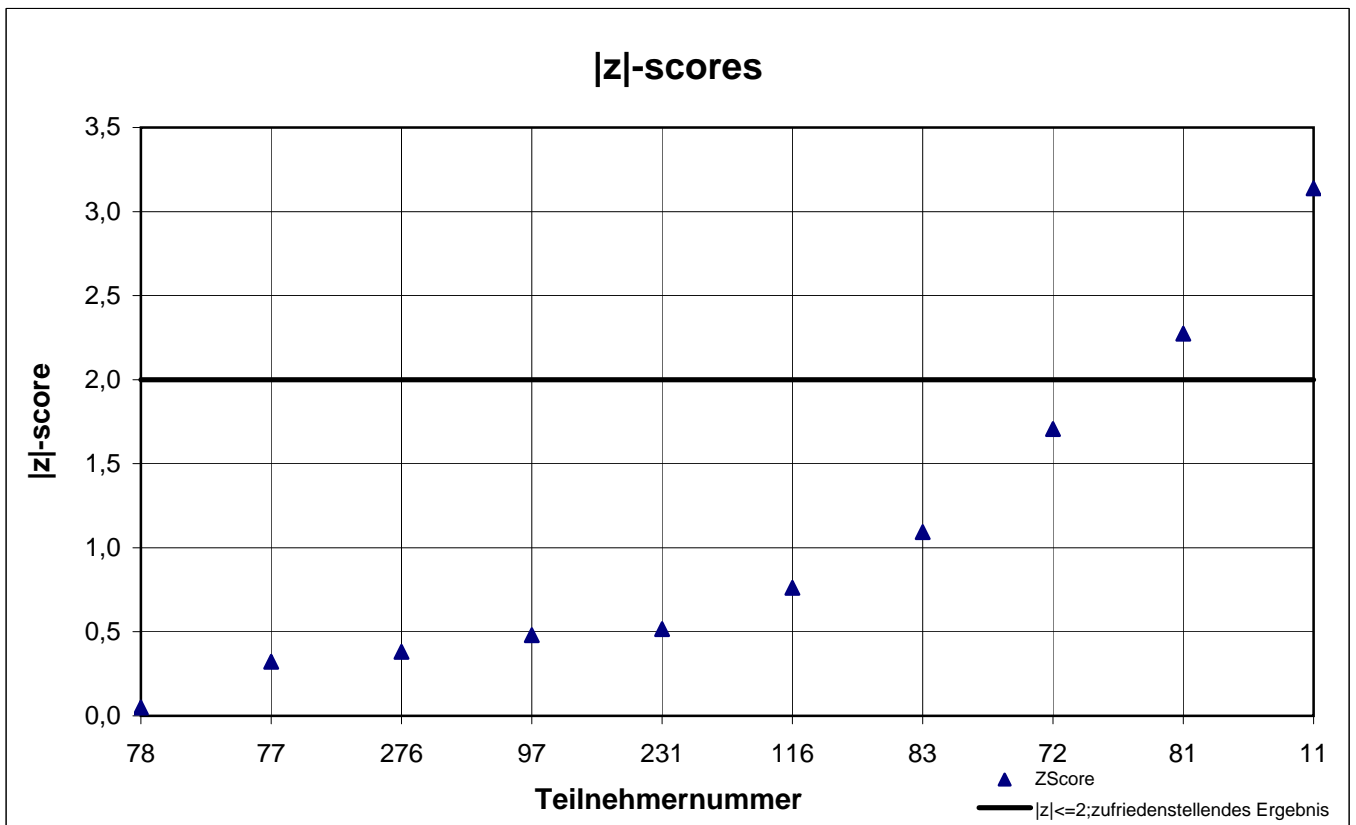
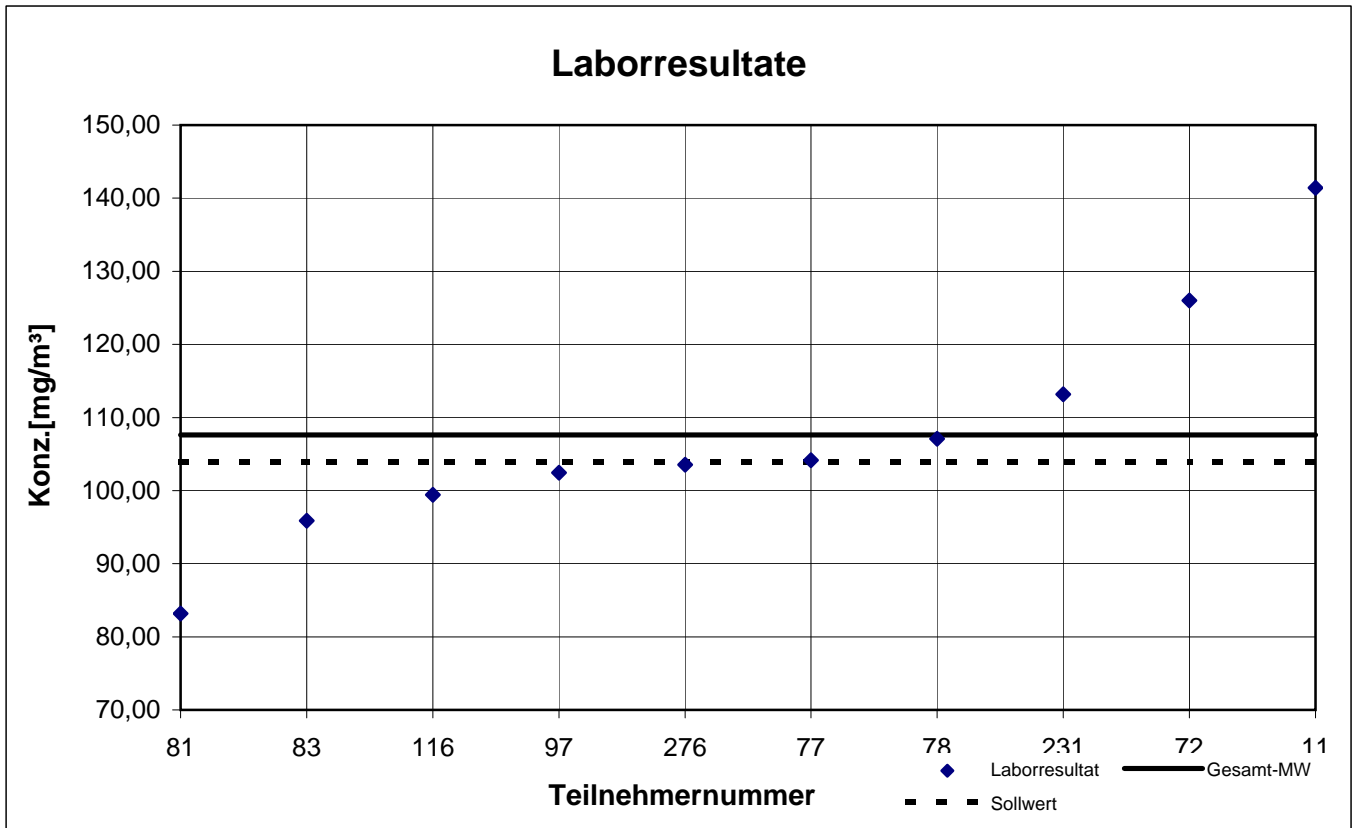
participant number	2-Butanon		4-Methyl-2-pentanone		Cyclohexanone		Cyclopentanone	
	result [mg/m ³]	z - score	result [mg/m ³]	z - score	result [mg/m ³]	z - score	result [mg/m ³]	z - score
11	141,4	3,1	41,10	1,0	30,20	0,4	94,80	0,5
72	126,0	1,7	39,50	0,6	28,80	0,1	87,50	0,3
77	104,2	0,3	36,20	0,3	23,14	2,1	68,49	2,4
78	107,1	0,0	36,81	0,2	28,80	0,1	93,56	0,3
81	83,17	2,3	35,29	0,6	28,35	0,3	96,99	0,7
83	95,87	1,1	k.A.	k.A.	k.A.	k.A.	k.A.	k.A.
97	102,5	0,5	37,13	0,1	34,67	1,9	102,8	1,4
116	99,44	0,8	32,84	1,2	25,64	1,2	74,13	1,8
231	113,2	0,5	38,25	0,2	25,51	1,2	97,12	0,7
276	103,5	0,4	39,53	0,6	36,87	2,7	98,50	0,9

 marked fields are outliers!

	2-Butanon	4-Methyl-2-pentanone	Cyclo-hexanone	Cyclo-pentanone
mean c_k [mg / m ³]	107,6	37,41	29,11	90,44
standard deviation S_k [mg/m ³]	16,222	2,512	4,384	11,680
relative standard deviation [%]	15,07	6,72	15,06	12,91
"true result" [mg/m ³]	104,0	37,00	29,50	91,20

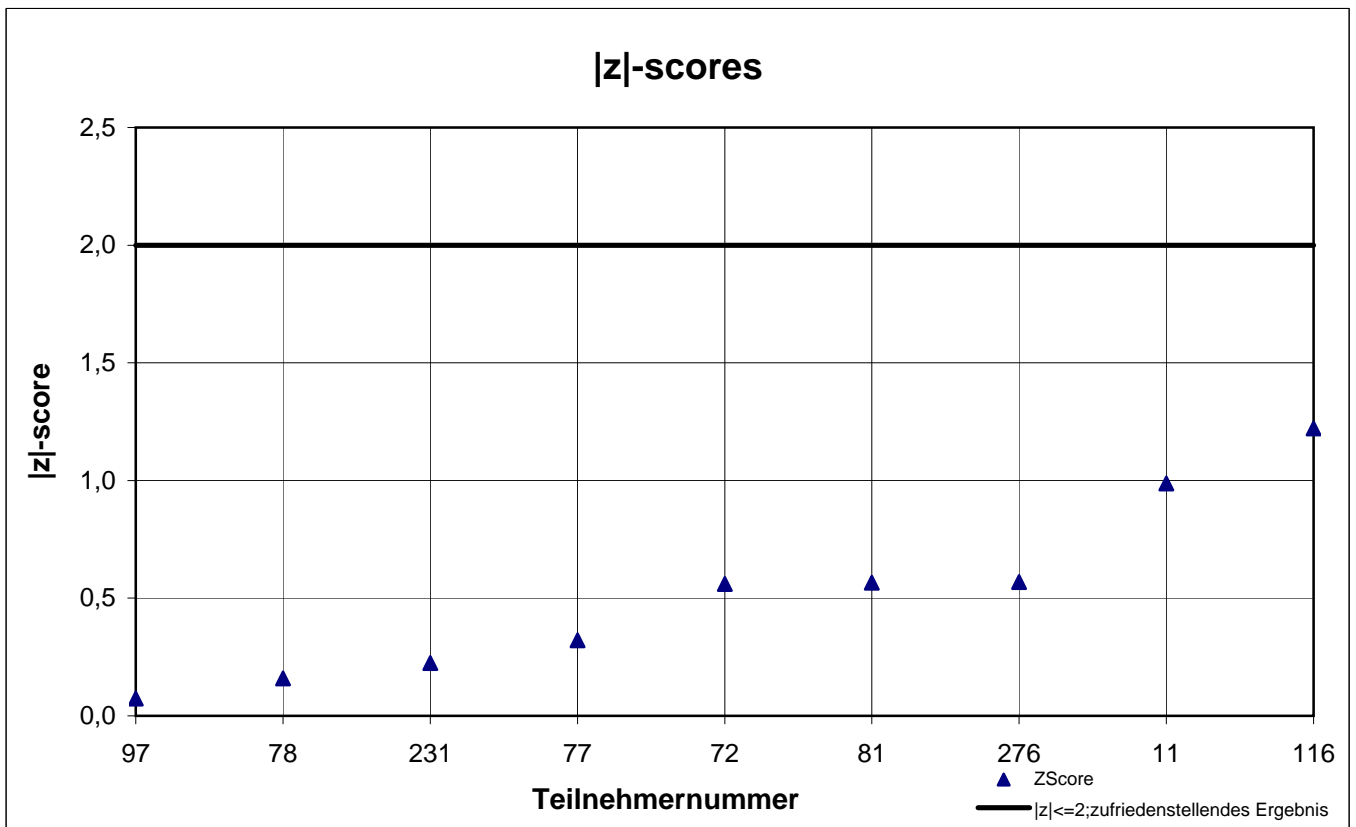
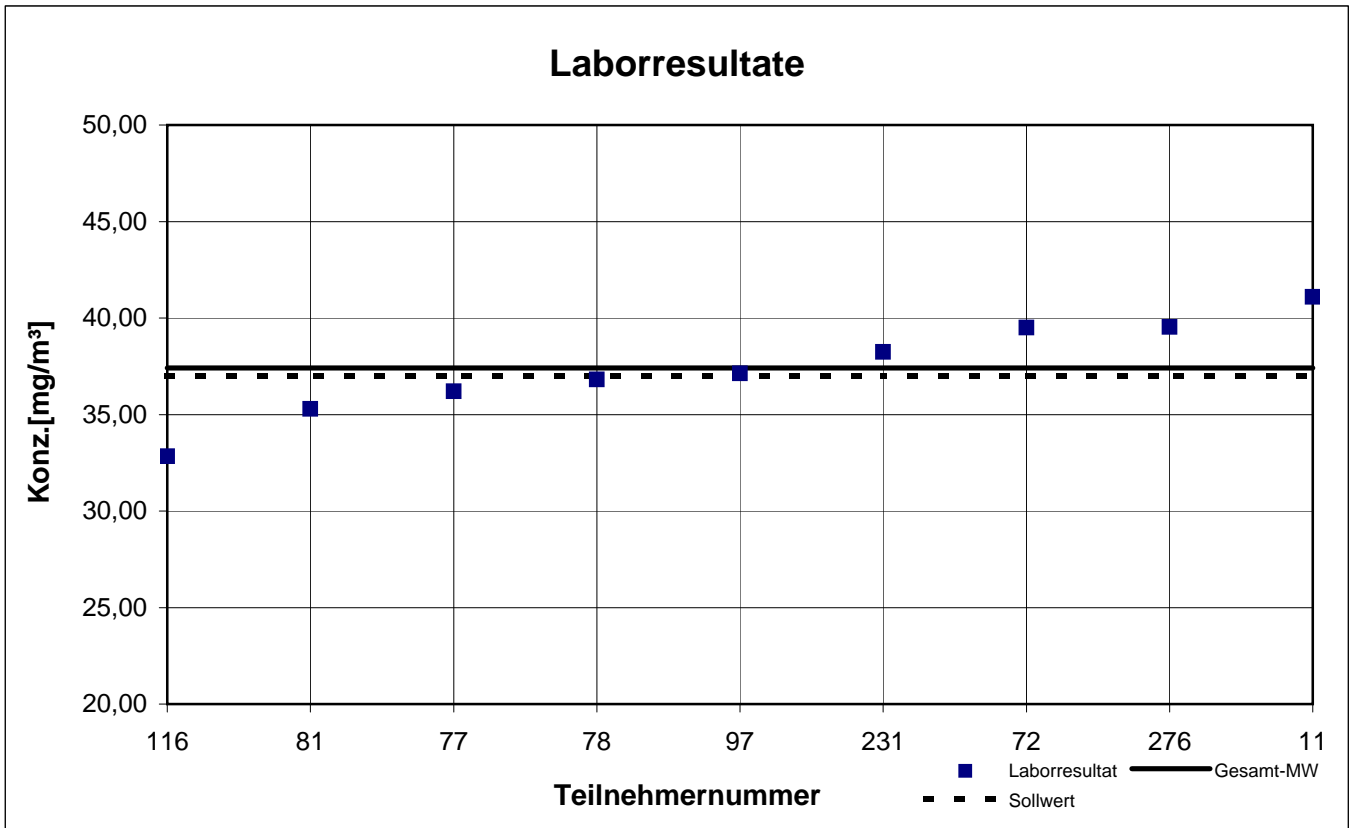
Probe 1

2-Butanon



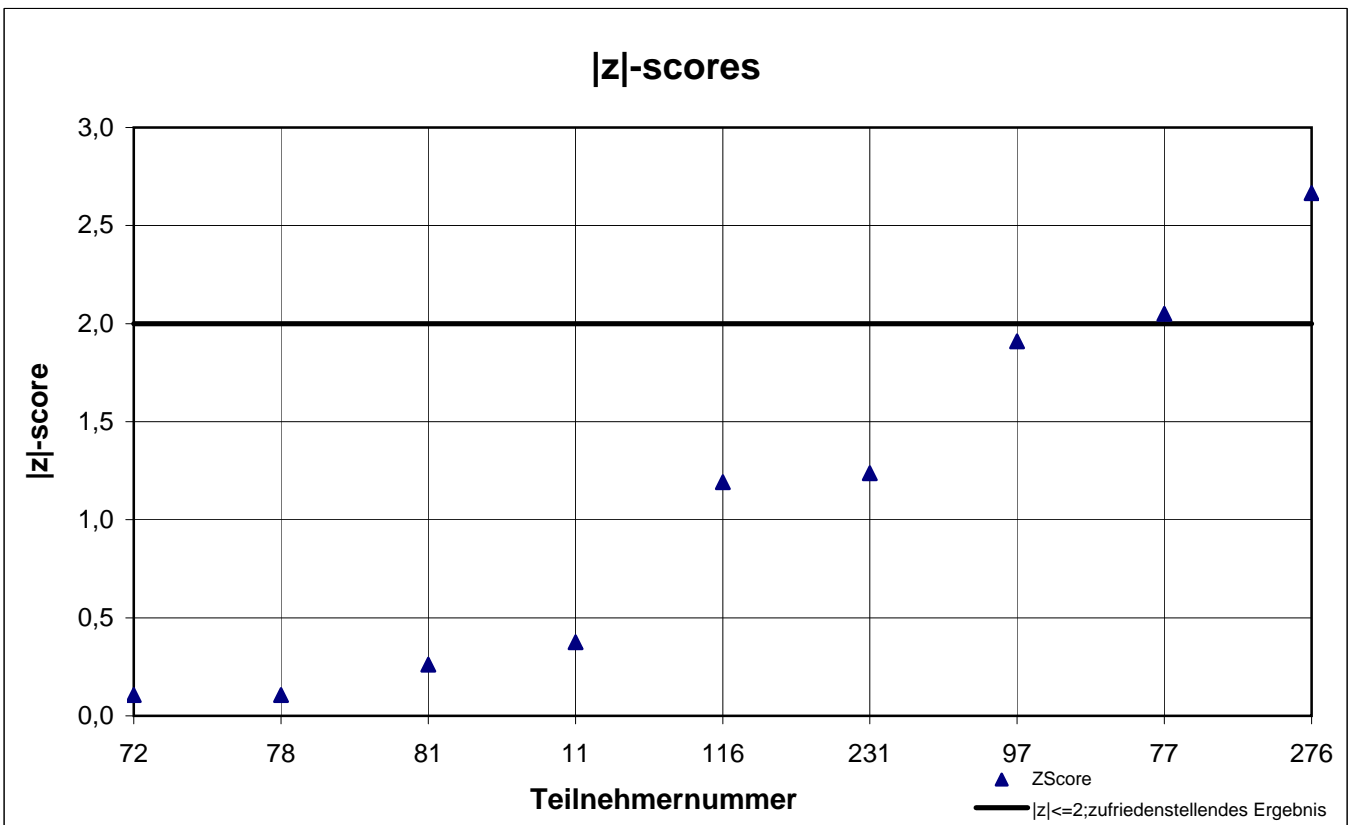
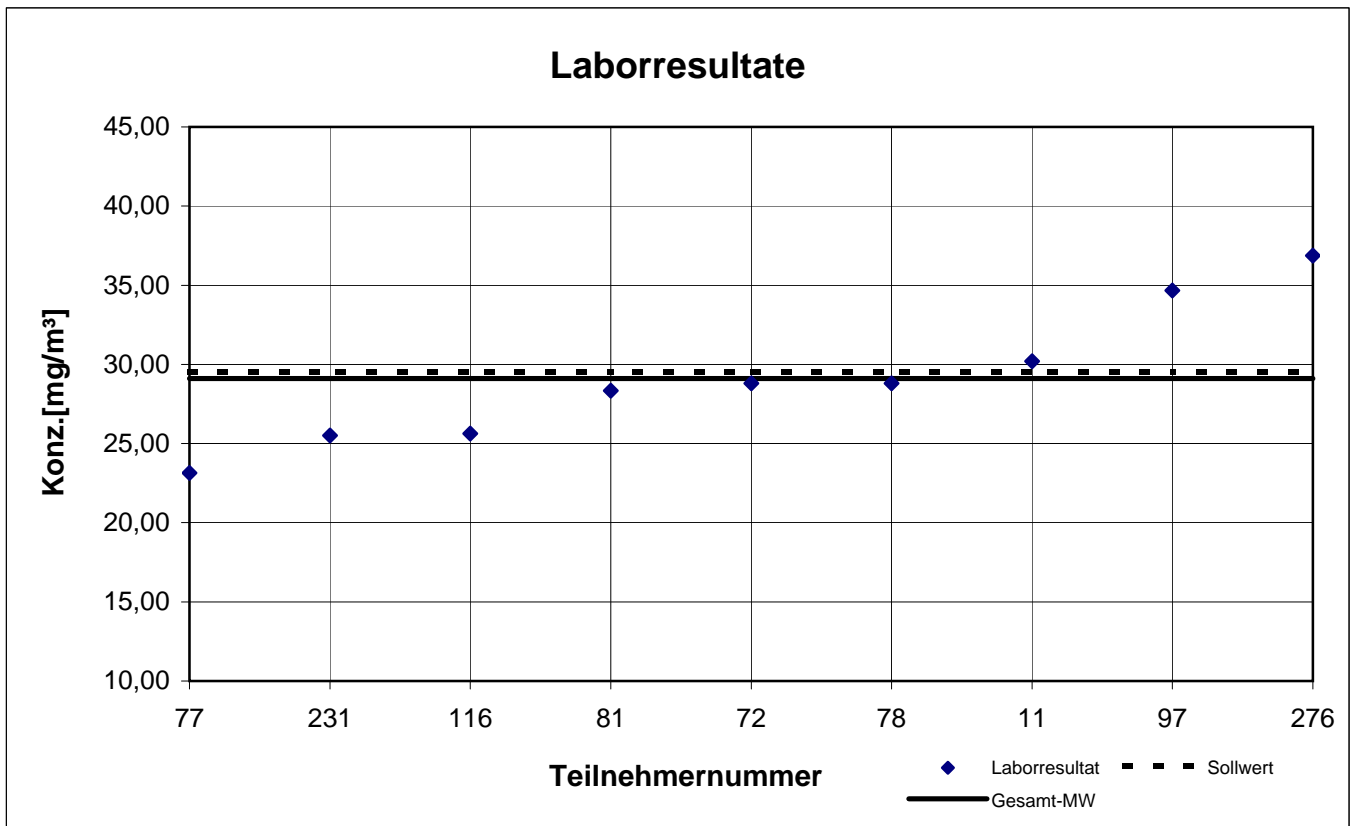
Probe 1

4-Methyl-2-pentanon



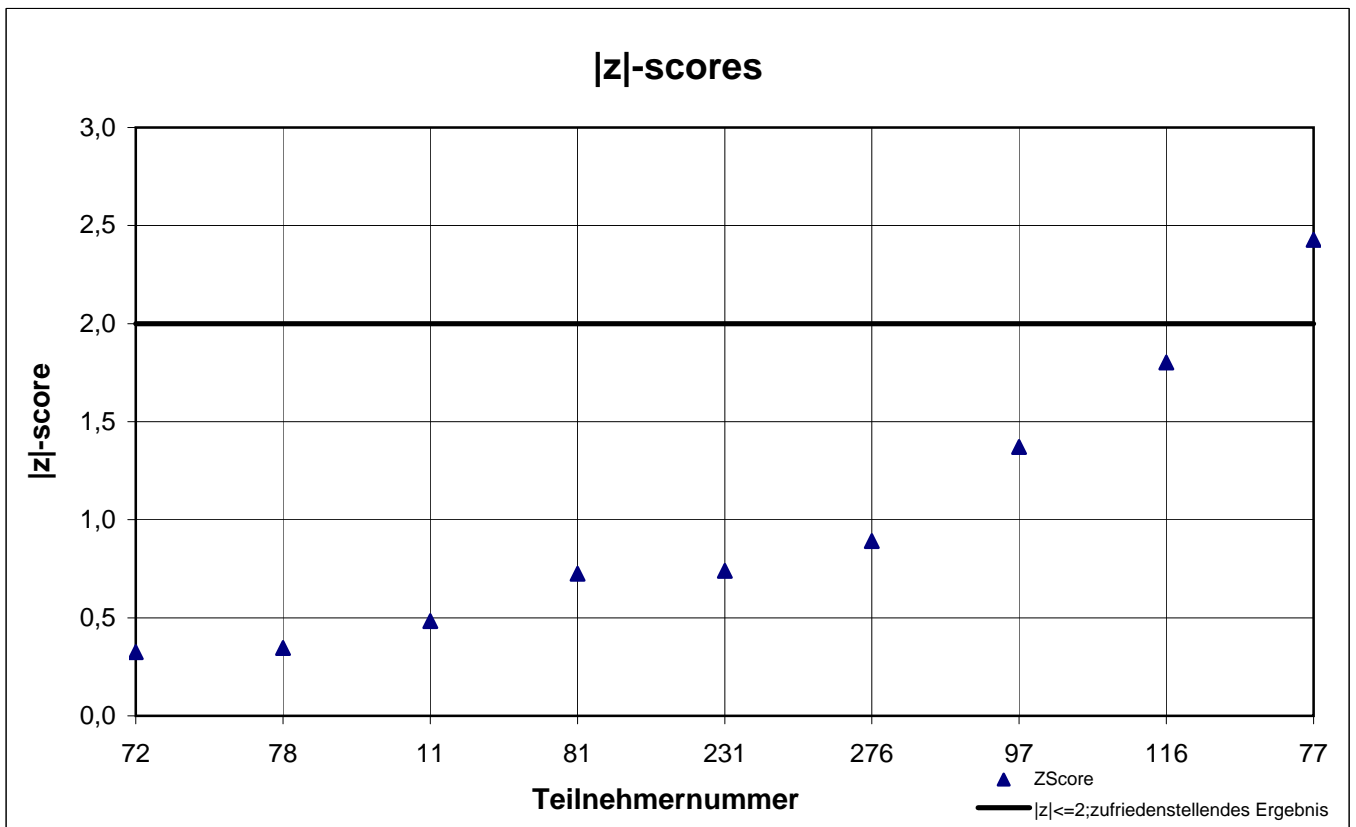
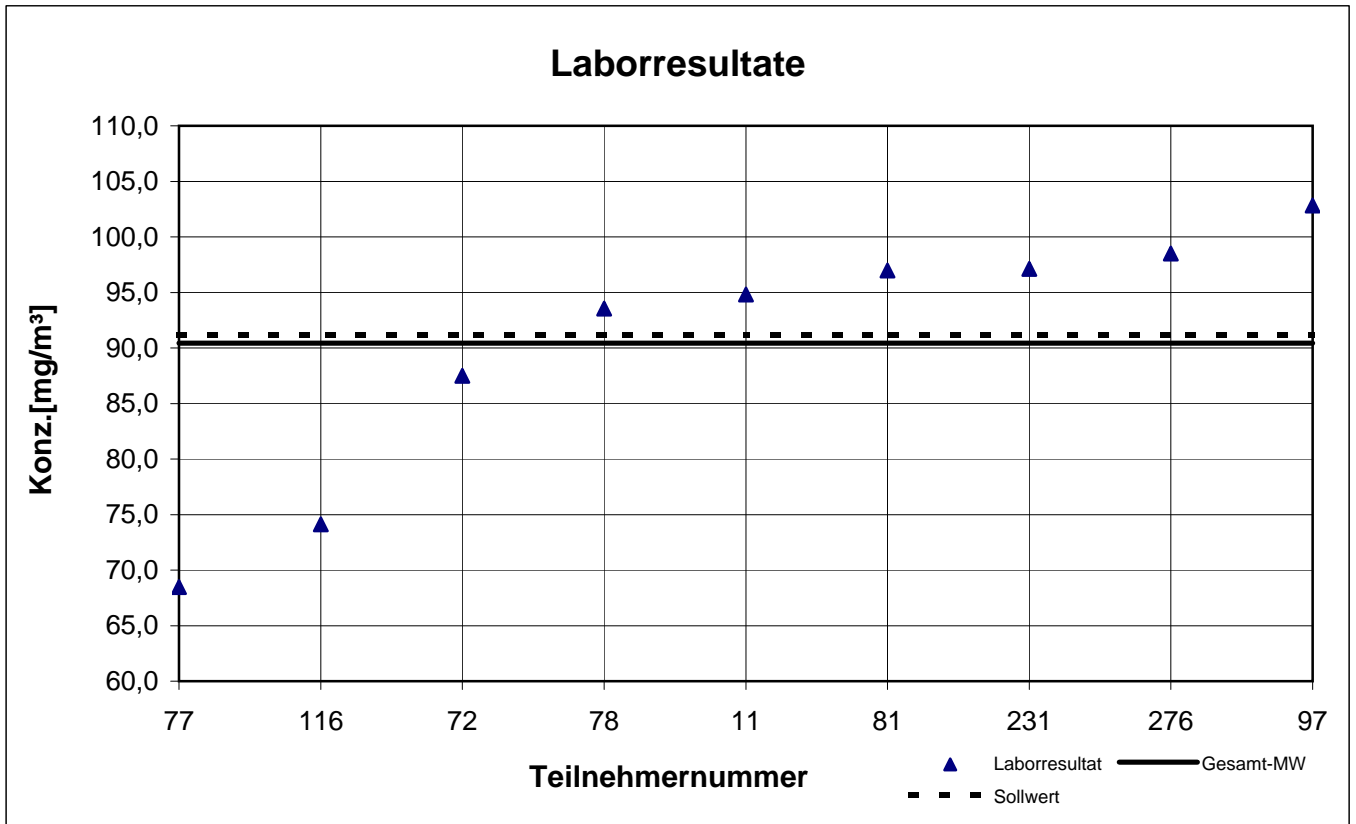
Probe 1

Cyclohexanon



Probe 1

Cyclopentanon



results sample 2

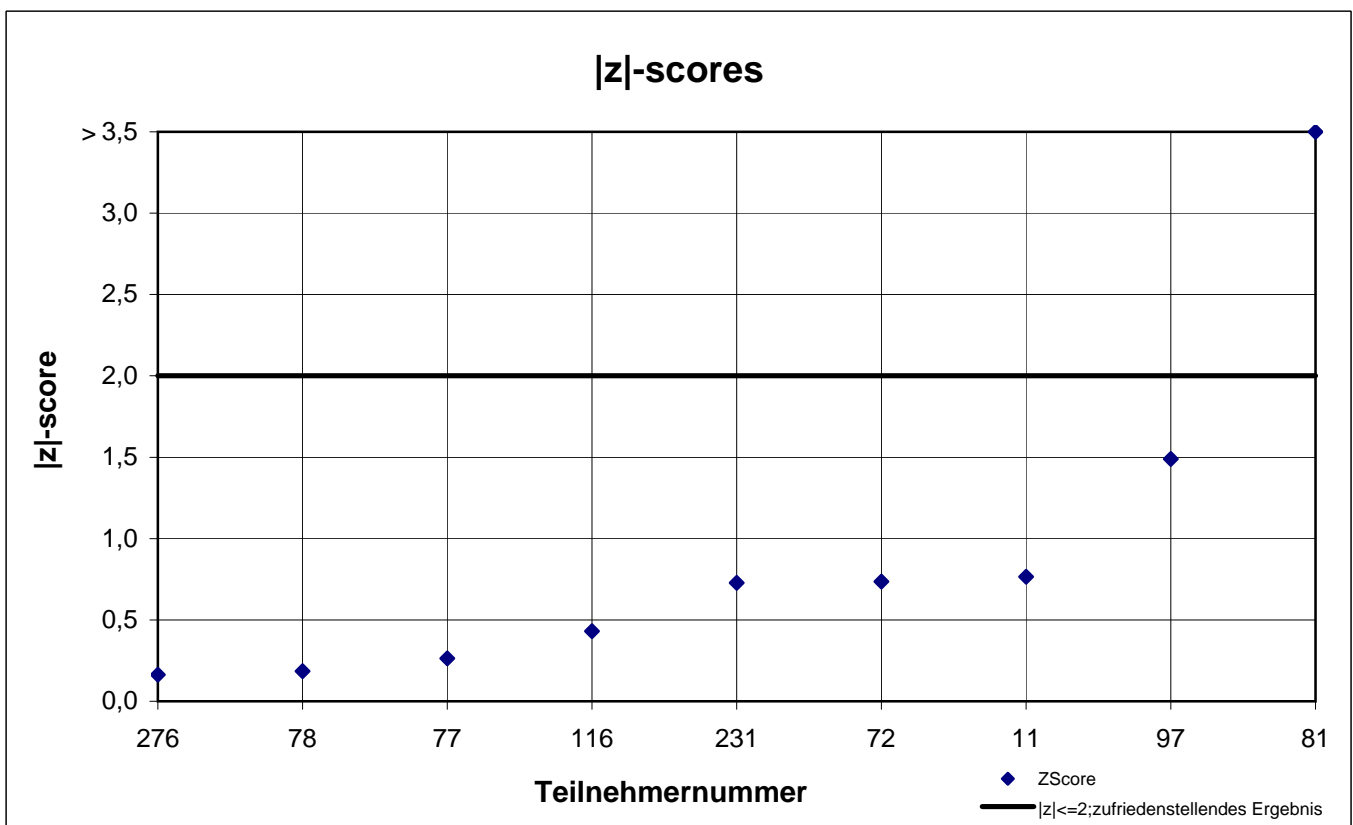
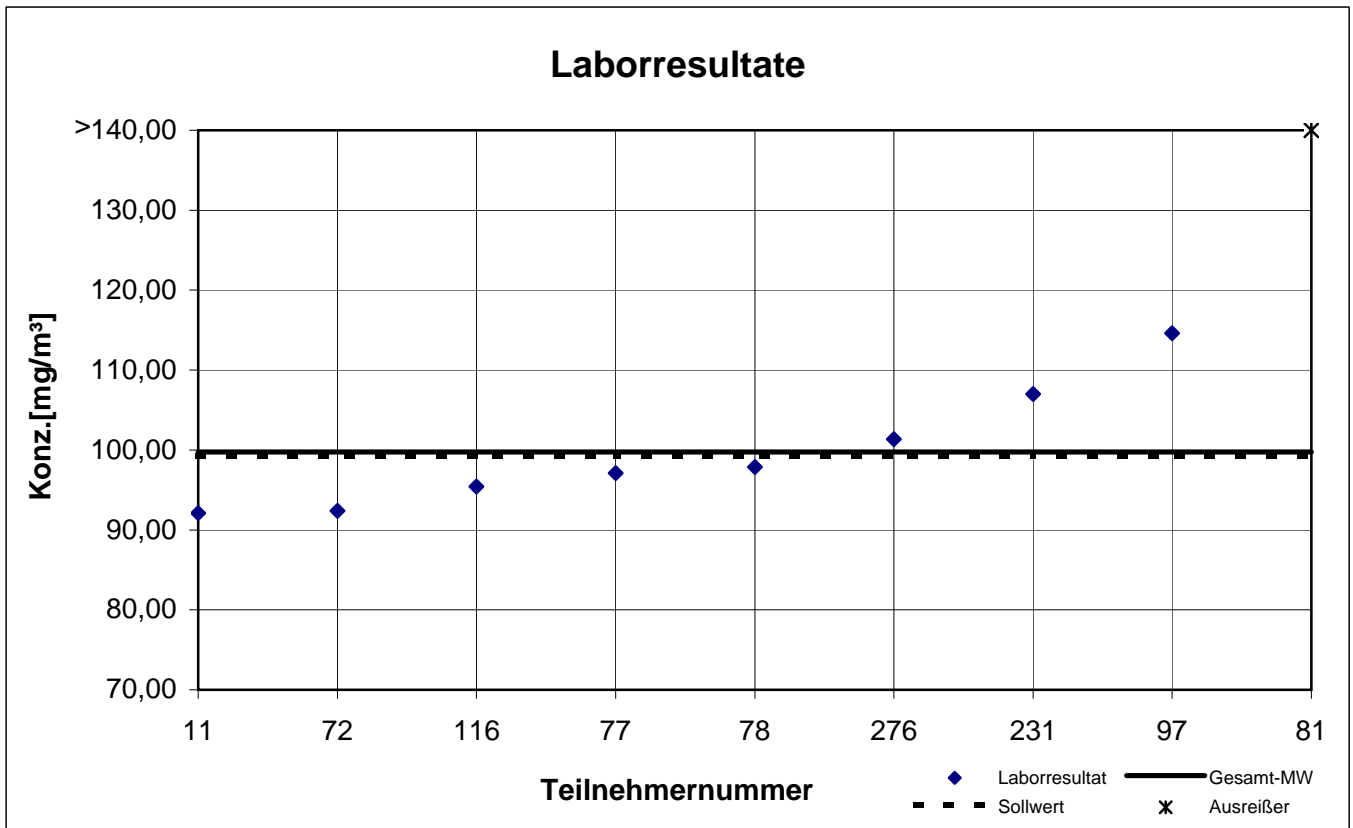
participant number	1-Butanol		Ethylbenzene		n-Butyl acetate		n-Hexane		p-Xylene		Toluene	
	result [mg/m ³]	z - score	result [mg/m ³]	z - score	result [mg/m ³]	z - score	result [mg/m ³]	z - score	result [mg/m ³]	z - score	result [mg/m ³]	z - score
11	92,10	0,8	82,60	0,5	85,00	1,3	68,30	0,3	60,90	0,2	72,80	0,7
72	92,40	0,7	89,90	0,3	70,90	0,6	74,40	0,5	62,80	0,1	65,50	0,4
77	97,10	0,3	90,41	0,4	78,03	0,3	73,98	0,5	65,54	0,6	66,67	0,2
78	97,89	0,2	83,87	0,4	72,29	0,4	68,34	0,3	61,08	0,2	63,89	0,6
81	180,1	8,1	76,73	1,2	66,05	1,2	58,55	1,7	53,08	1,4	57,79	1,5
83	k.A.	k.A.	k.A.	k.A.	k.A.	k.A.	k.A.	k.A.	k.A.	k.A.	82,15	2,1
97	114,6	1,5	90,73	0,4	76,27	0,1	69,57	0,1	64,20	0,4	67,17	0,1
116	95,44	0,4	86,60	0,1	71,82	0,5	66,56	0,6	61,20	0,1	62,88	0,7
231	107,0	0,7	96,80	1,1	86,33	1,4	81,75	1,6	68,22	1,0	74,38	0,9
276	101,4	0,2	87,23	0,0	72,40	0,4	73,47	0,4	61,07	0,2	66,20	0,3

 marked fields are outliers!

	1-Butanol	Ethylbenzene	n-Butylacetate	n-Hexane	p-Xylene	Toluene
mean c_k [mg / m ³]	99,74	87,21	75,45	70,55	62,01	67,94
standard deviation S_k [mg/m ³]	7,721	5,749	6,694	6,435	4,180	6,858
relative standard deviation [%]	7,74	6,59	8,87	9,12	6,74	10,09
"true result" [mg/m ³]	99,20	89,20	74,80	76,20	62,40	65,40

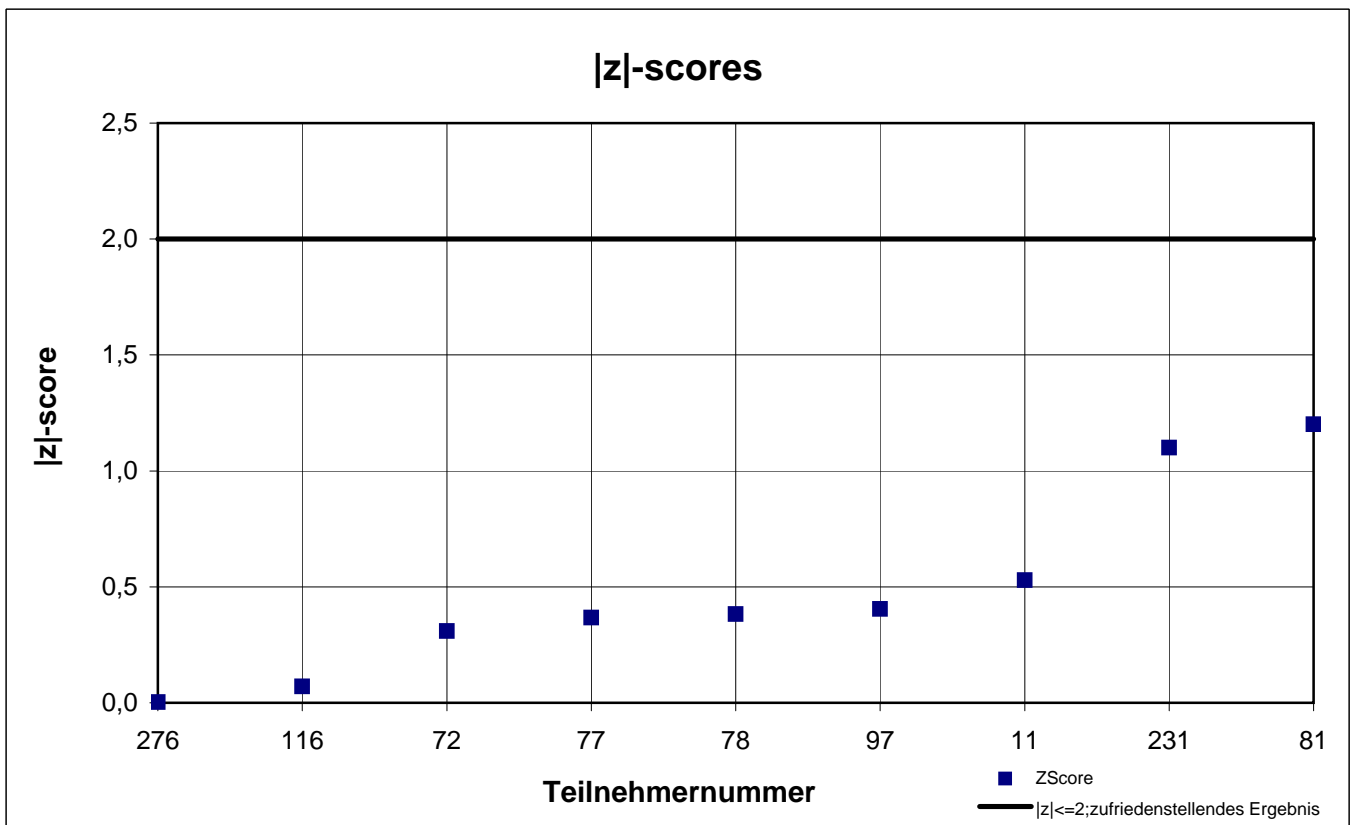
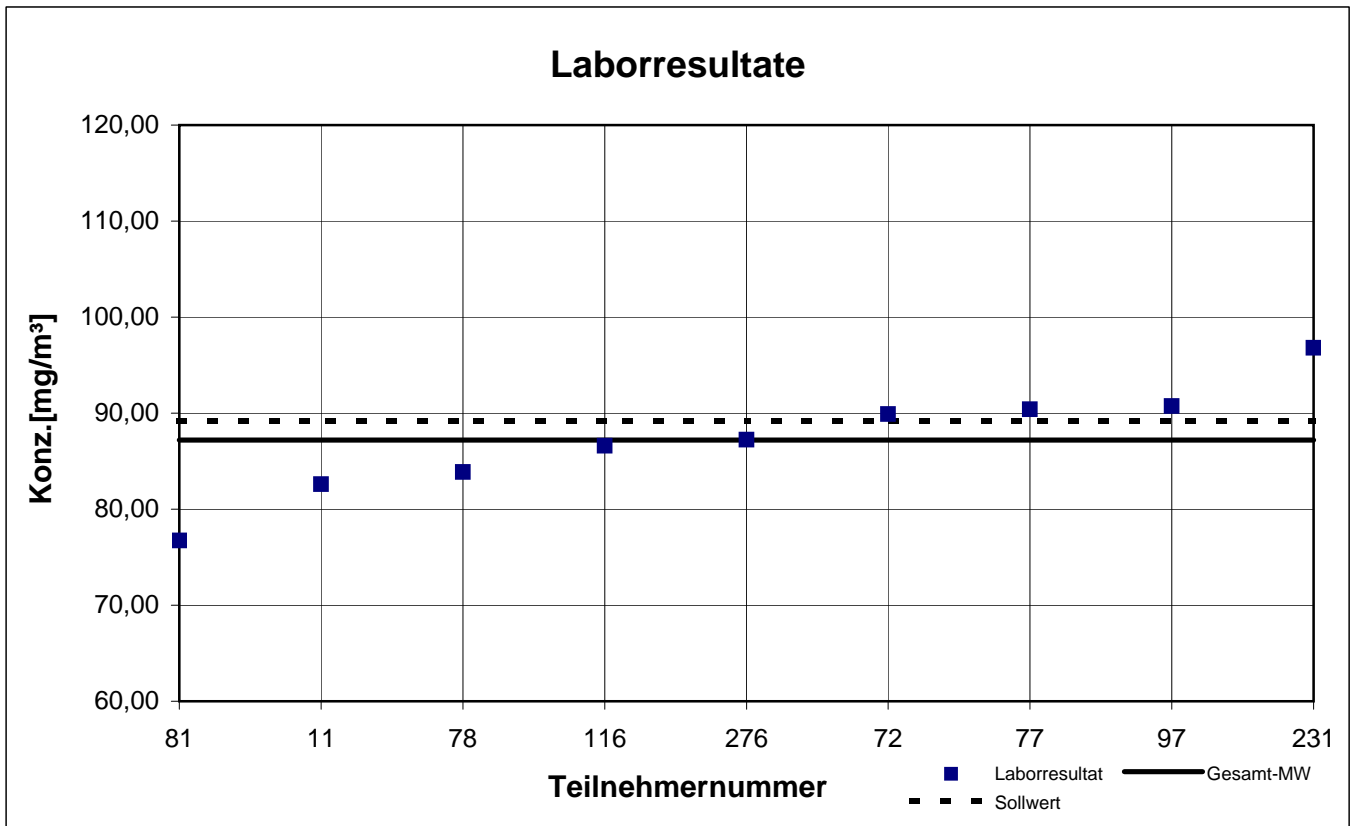
Probe 2

1-Butanol



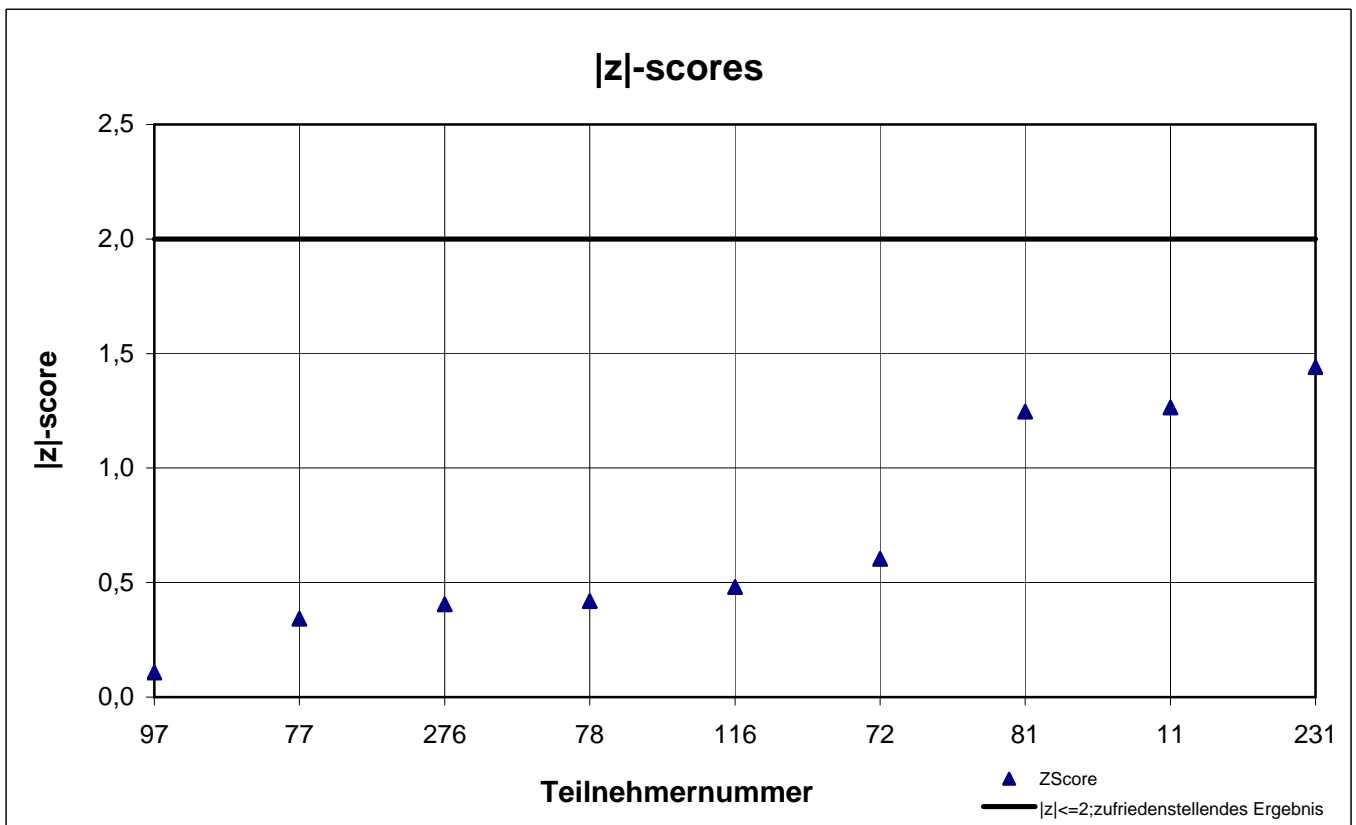
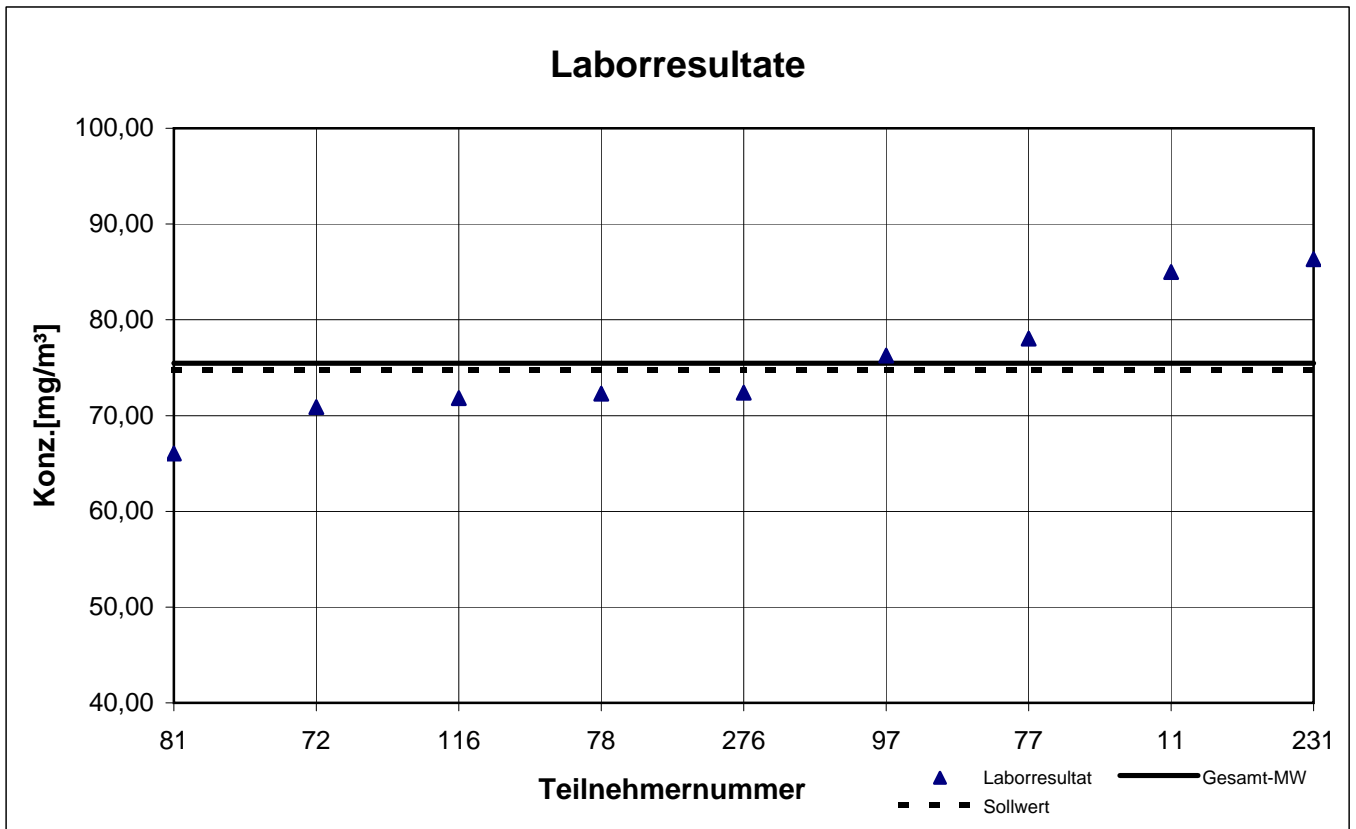
Probe 2

Ethylbenzol



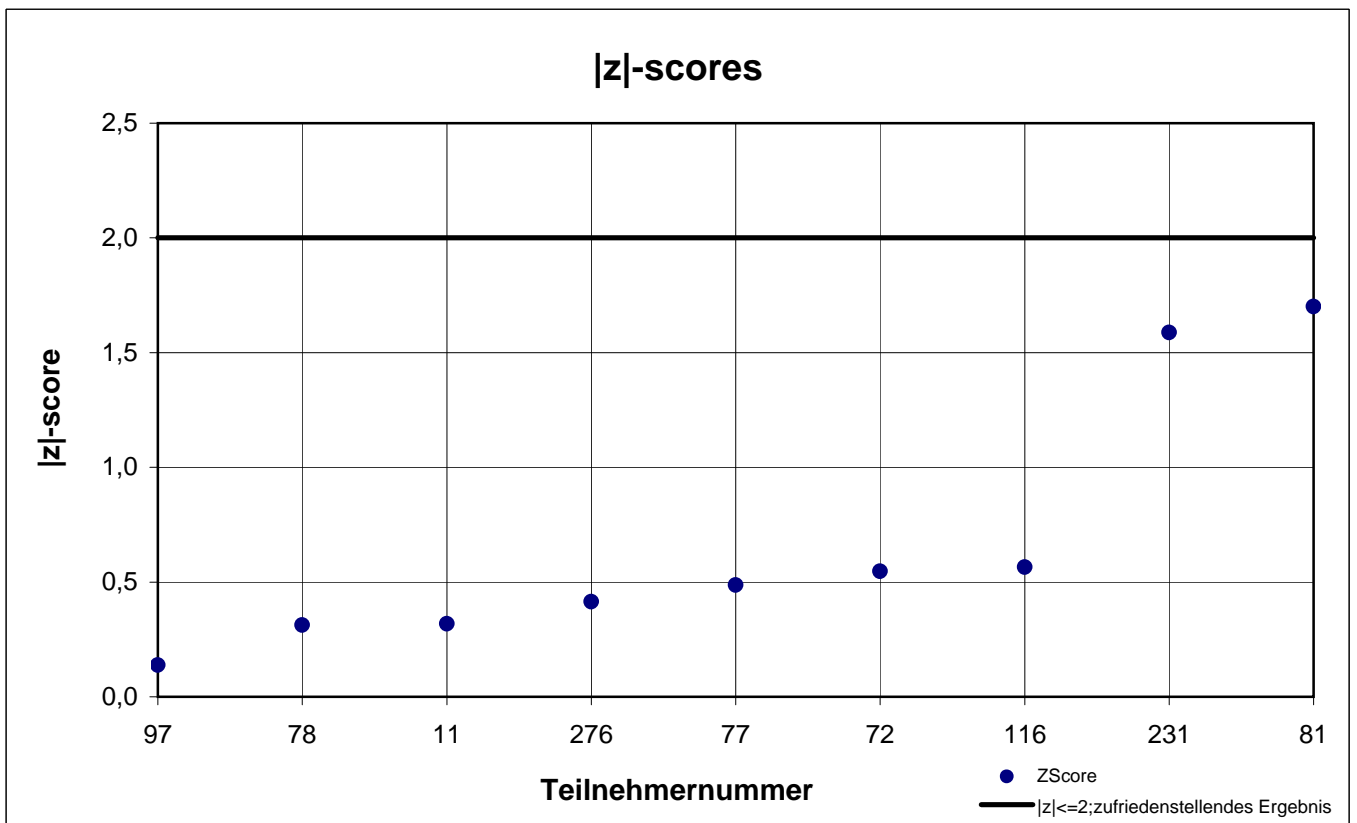
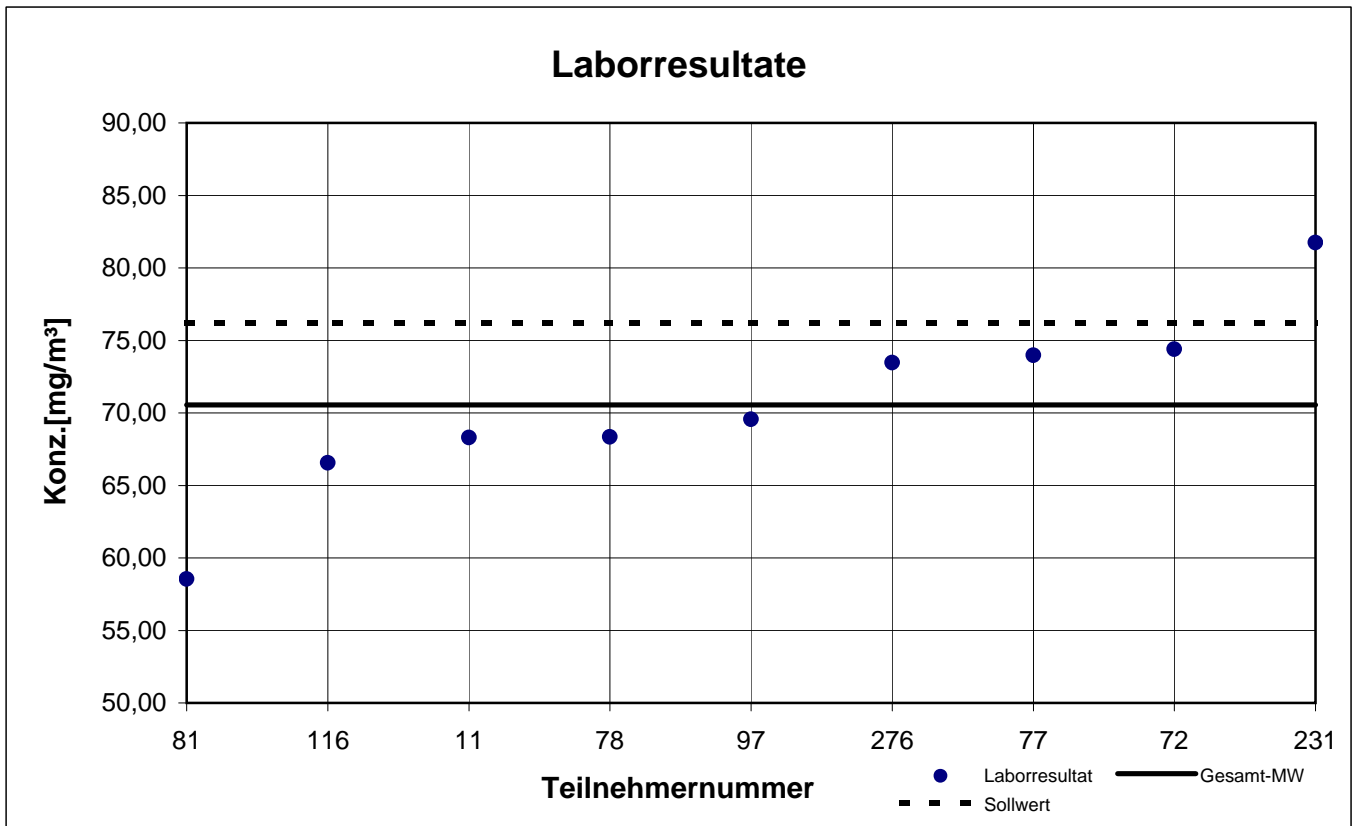
Probe 2

n-Butylacetat



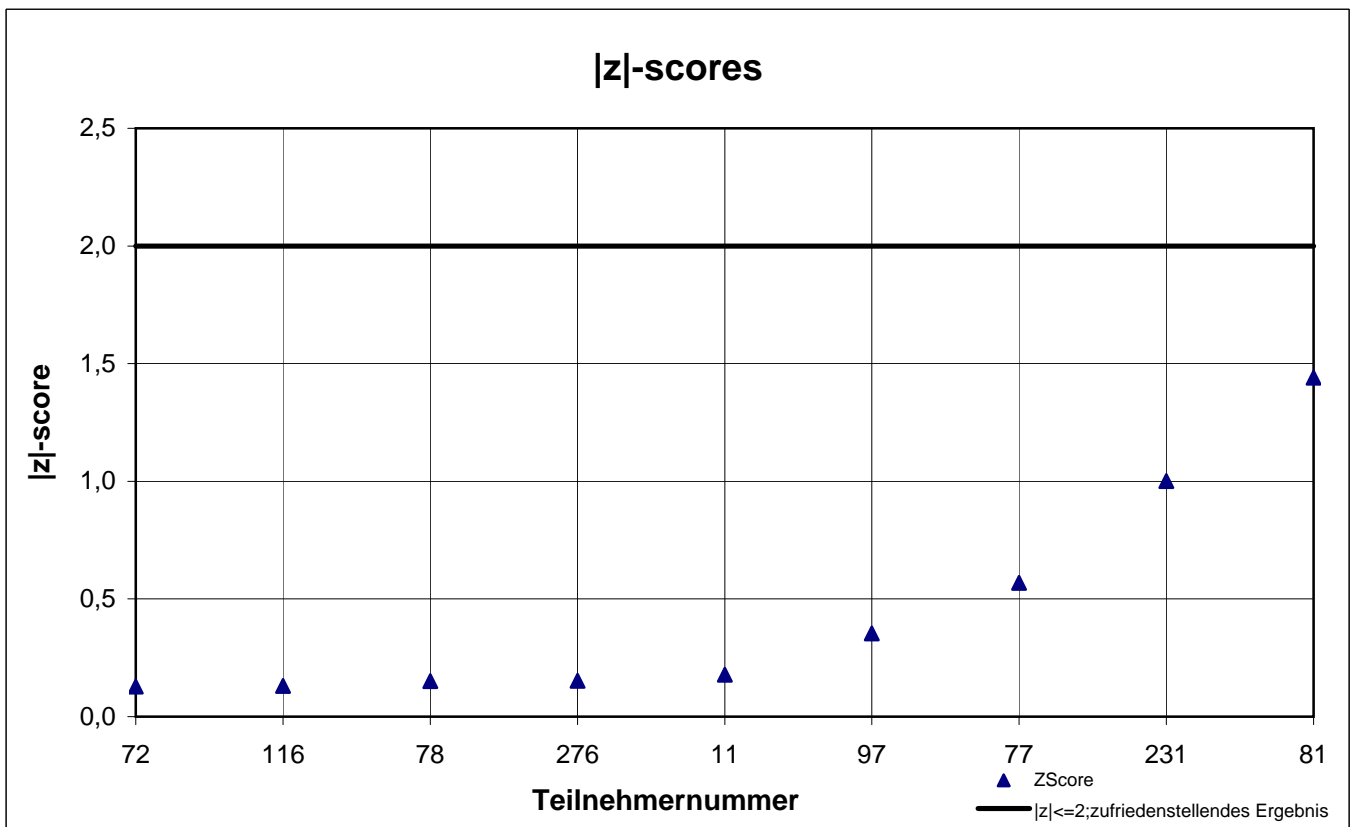
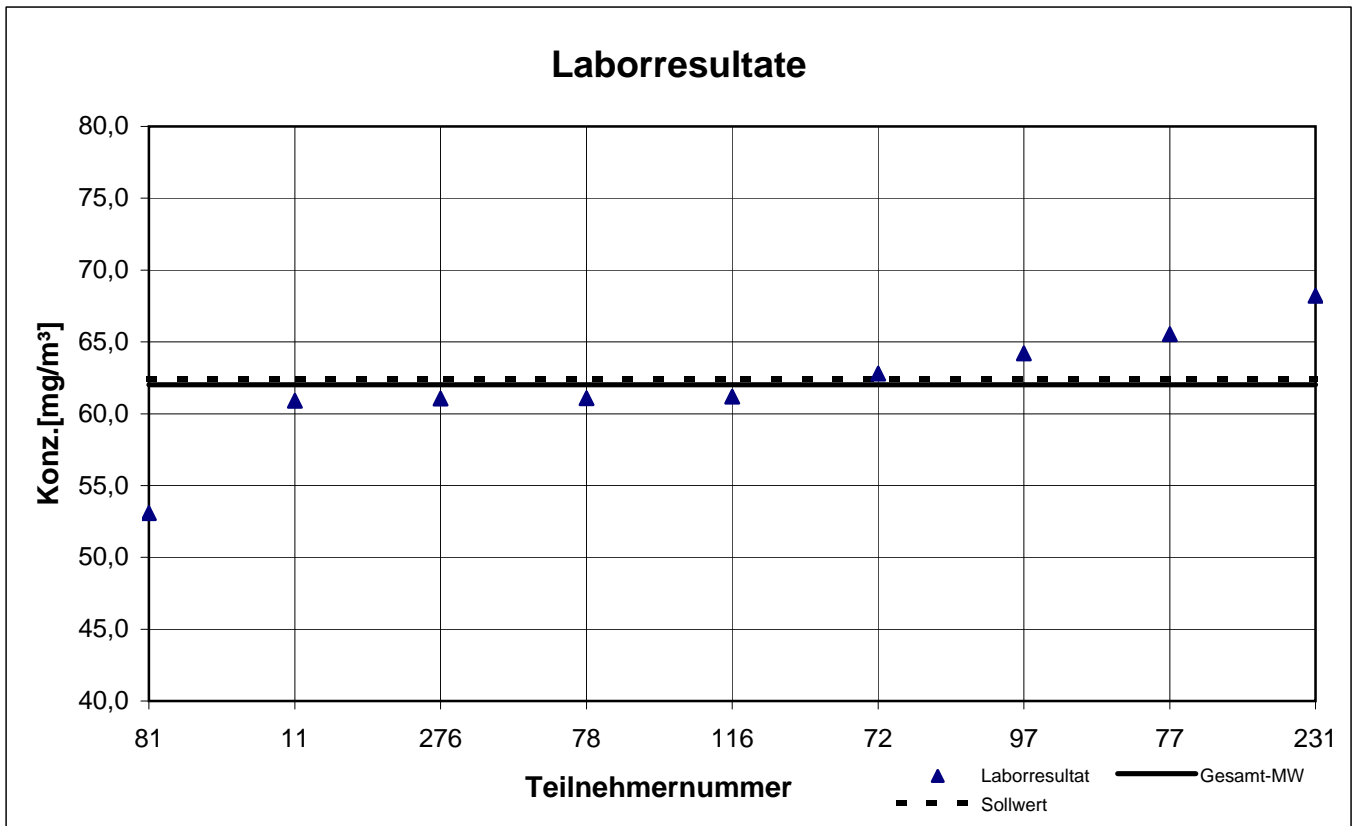
Probe 2

n-Hexan



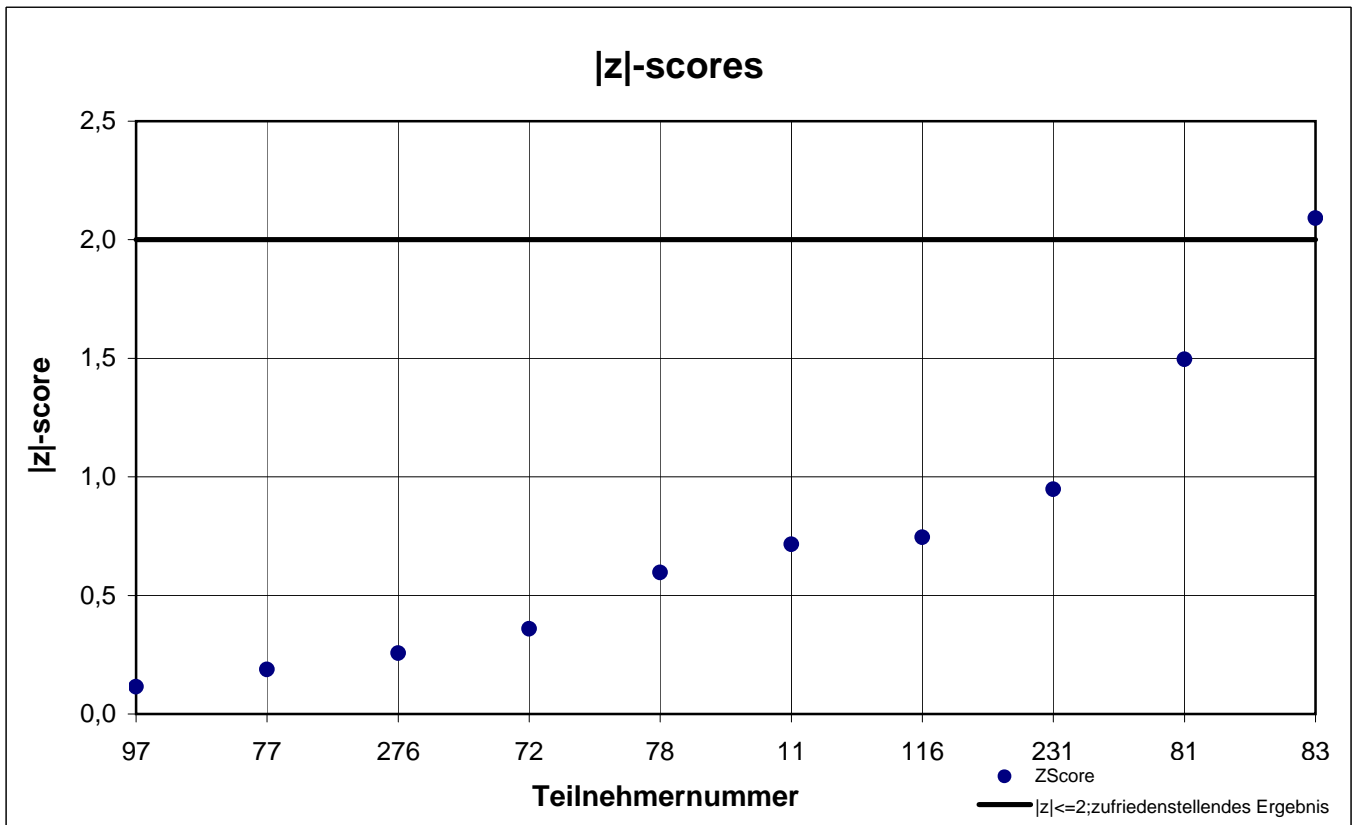
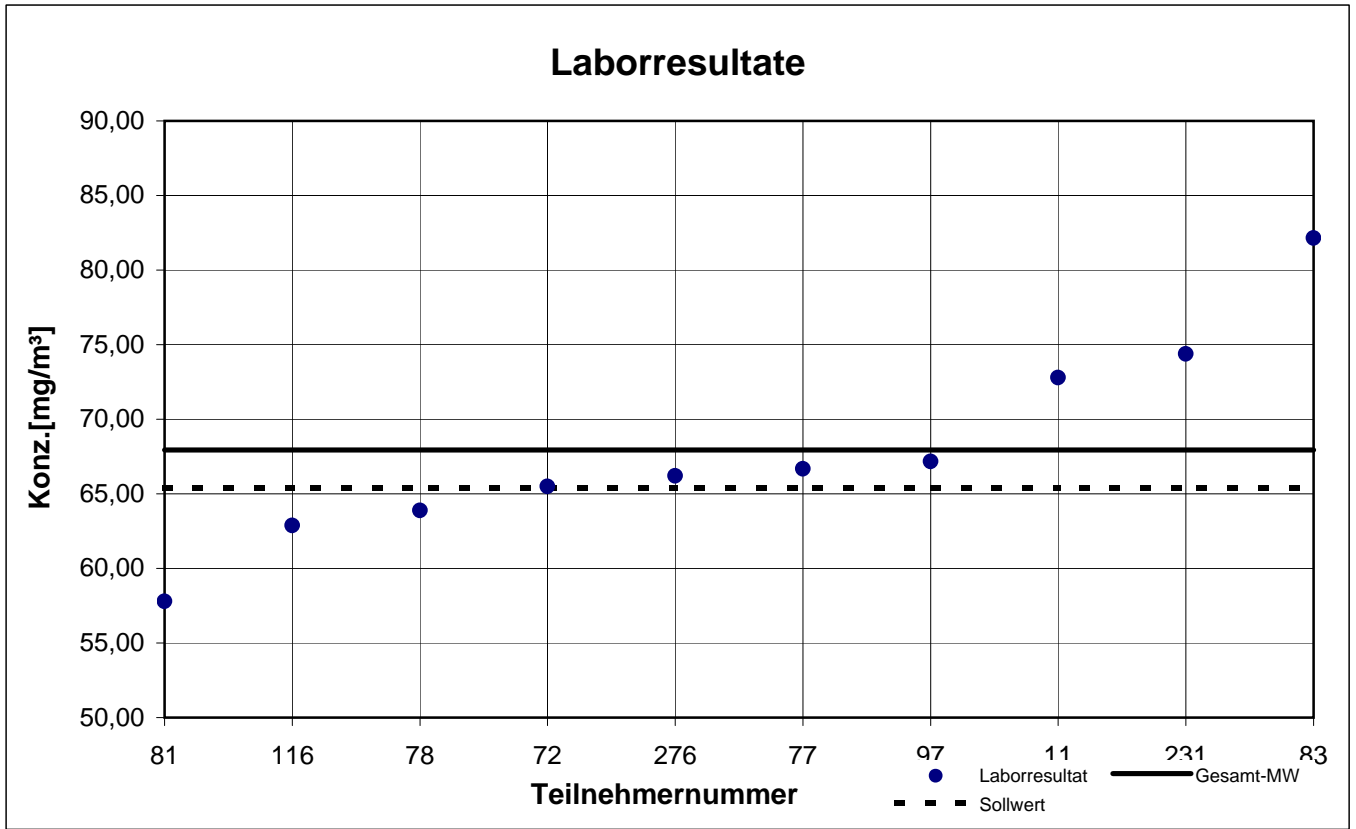
Probe 2

p-Xylol



Probe 2

Toluol



results sample 3

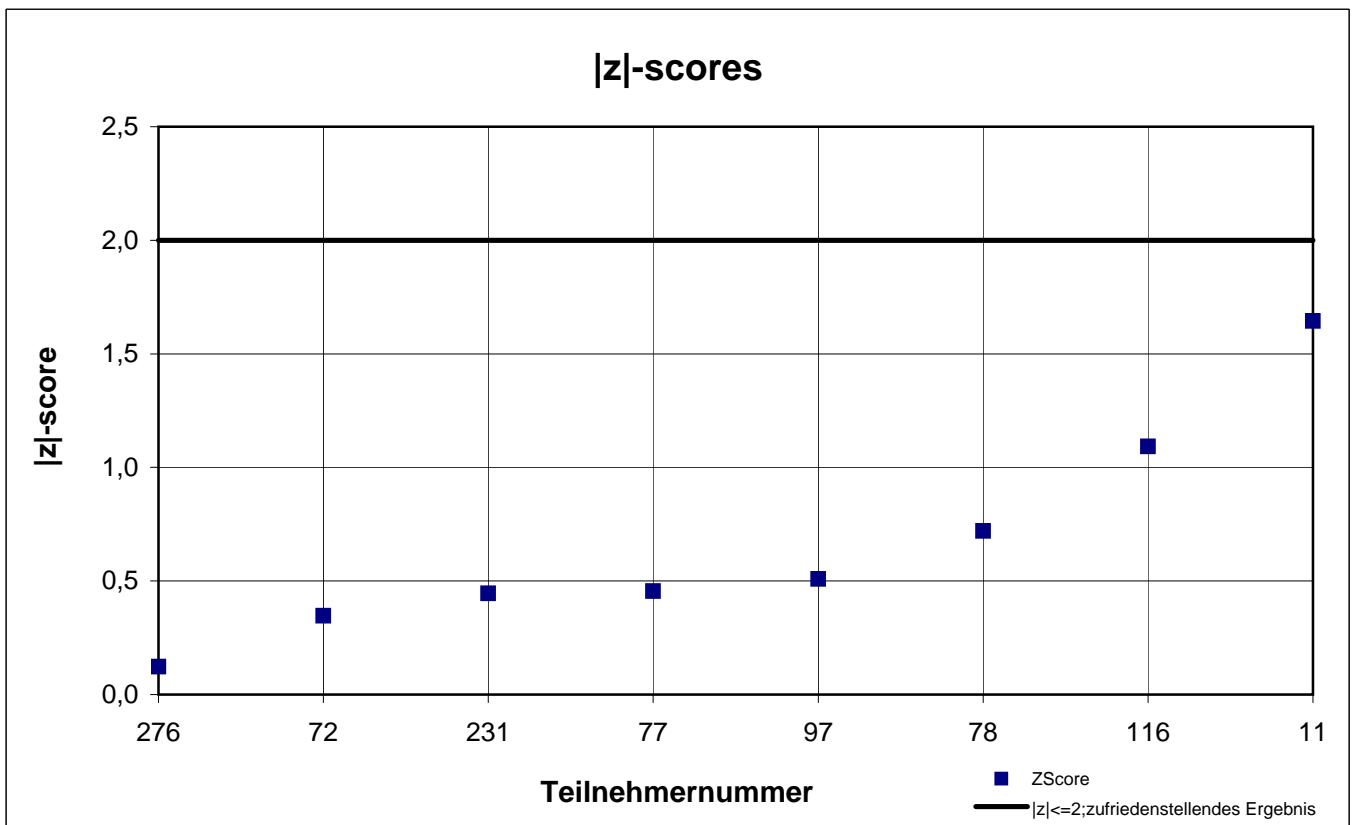
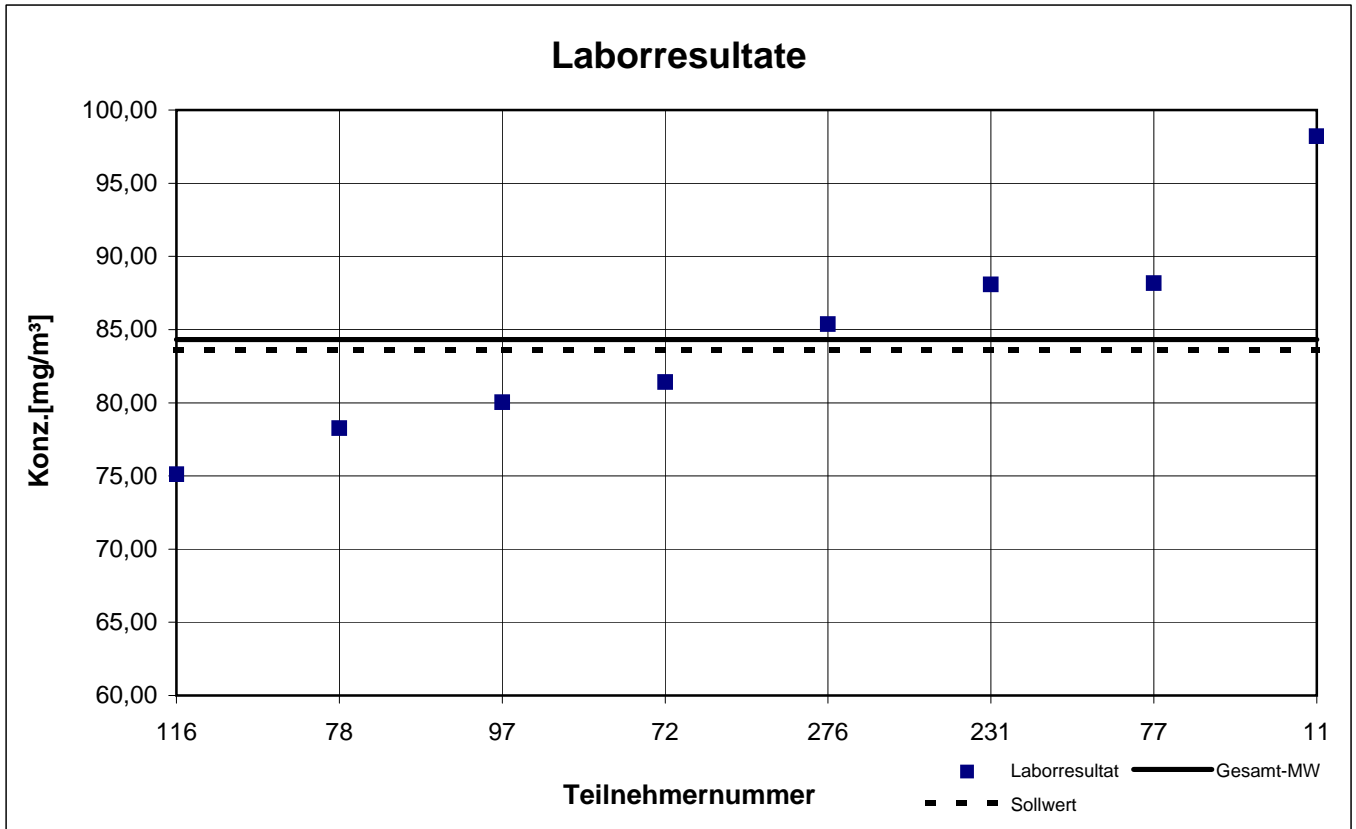
participant number	1-Methoxy-2-propanol		2-Butanol		2-Butoxyethanol		Ethanol	
	result [mg/m ³]	z - score	result [mg/m ³]	z - score	result [mg/m ³]	z - score	result [mg/m ³]	z - score
11	98,20	1,6	41,20	0,4	58,80	2,4	123,6	0,9
72	81,40	0,3	38,90	0,2	50,20	0,6	94,90	1,6
77	88,17	0,5	35,51	1,0	47,83	0,1	103,6	0,9
78	78,26	0,7	39,02	0,1	39,29	1,7	112,2	0,1
81	k.A.	k.A.	k.A.	k.A.	k.A.	k.A.	k.A.	k.A.
83	k.A.	k.A.	k.A.	k.A.	k.A.	k.A.	108,8	0,4
97	80,03	0,5	46,13	1,7	49,17	0,4	117,5	0,4
116	75,12	1,1	33,43	1,5	35,84	2,4	99,77	1,2
231	88,08	0,4	42,15	0,7	47,55	0,0	126,1	1,1
276	85,37	0,1	39,77	0,1	50,23	0,6	134,2	1,8

 marked fields are outliers!

	1-Methoxy-2-propanol	2-Butanol	2-Butoxyethanol	Ethanol
mean c_k [mg / m ³]	84,33	39,51	47,36	113,4
standard deviation S_k [mg/m ³]	7,281	3,915	7,057	13,034
relative standard deviation [%]	8,63	9,91	14,90	11,49
"true result" [mg/m ³]	83,60	39,40	41,40	113,2

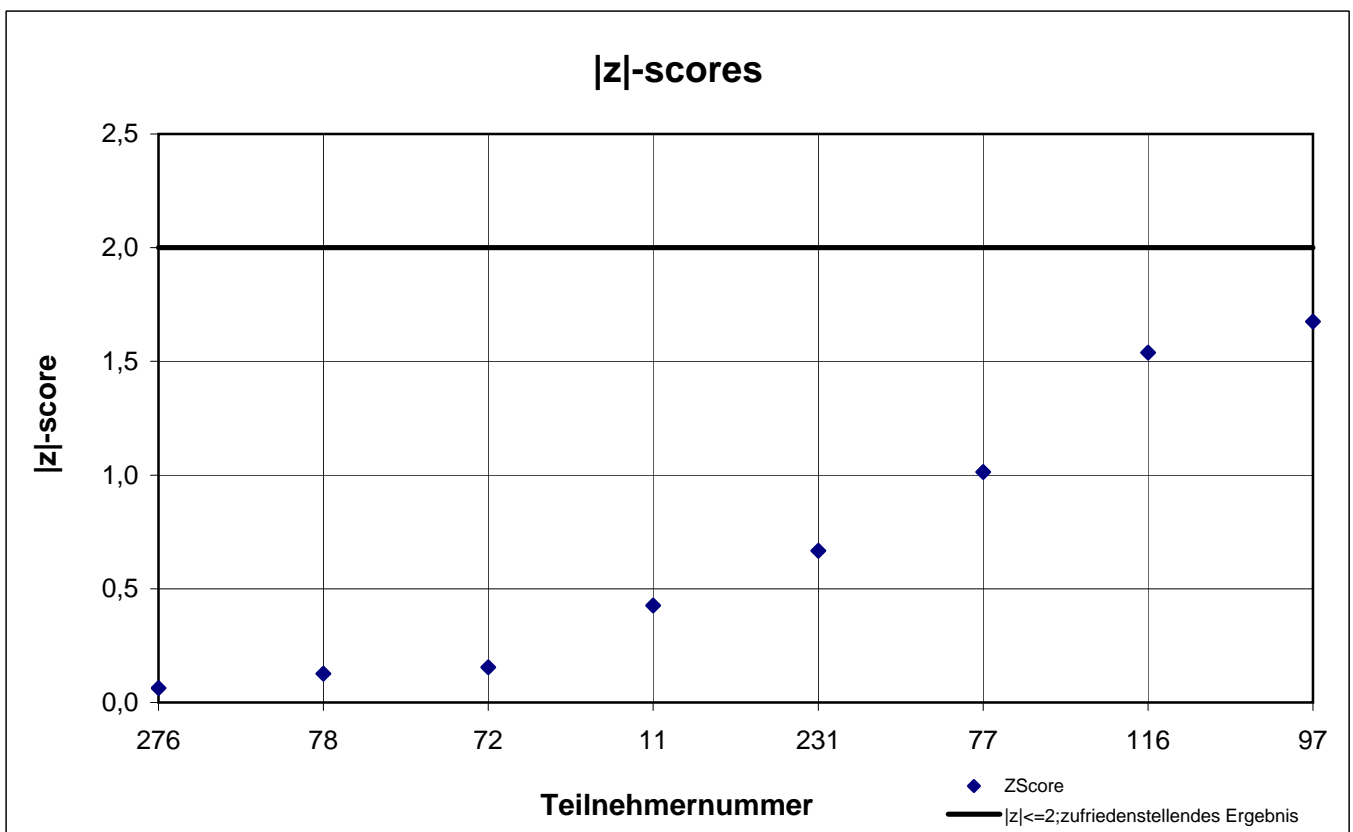
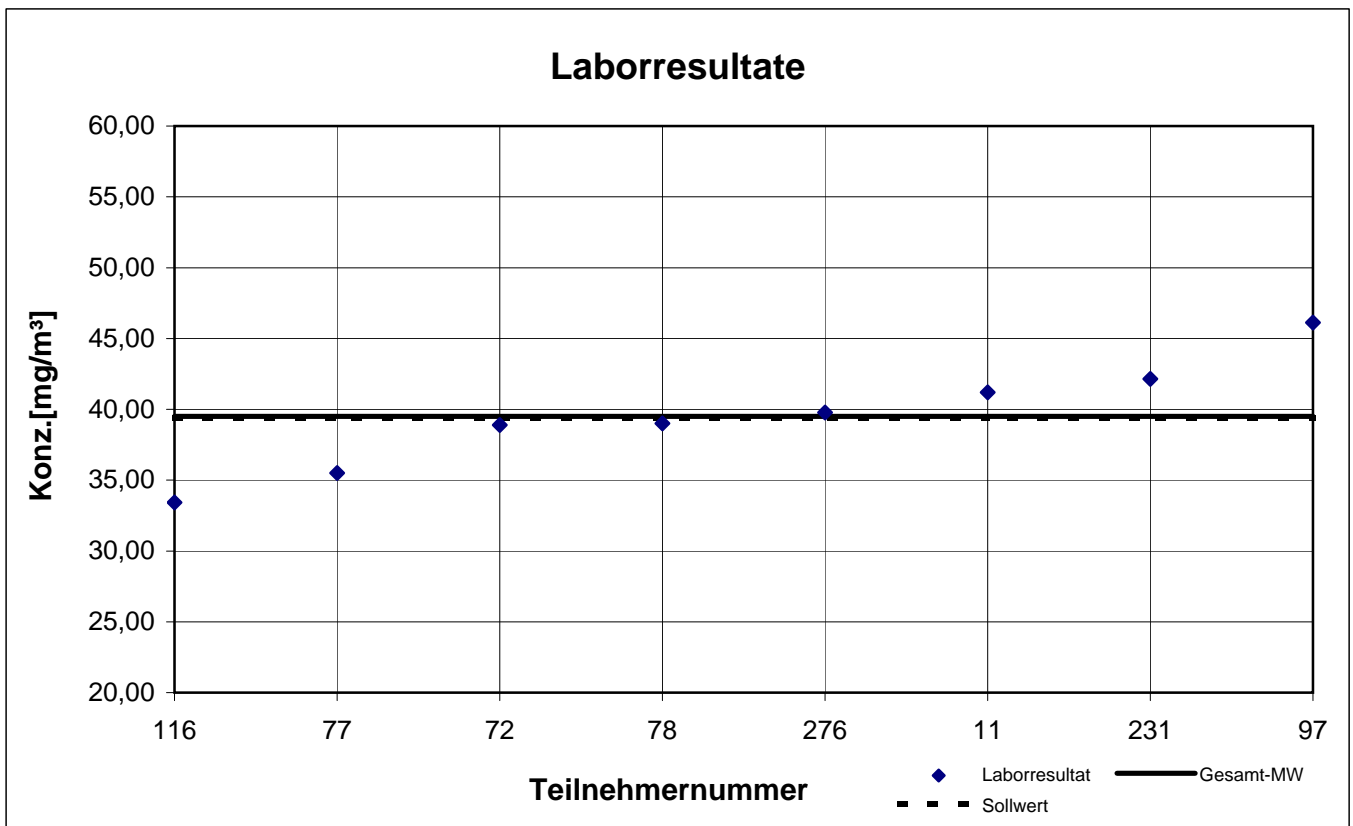
Probe 3

1-Methoxy-2-propanol



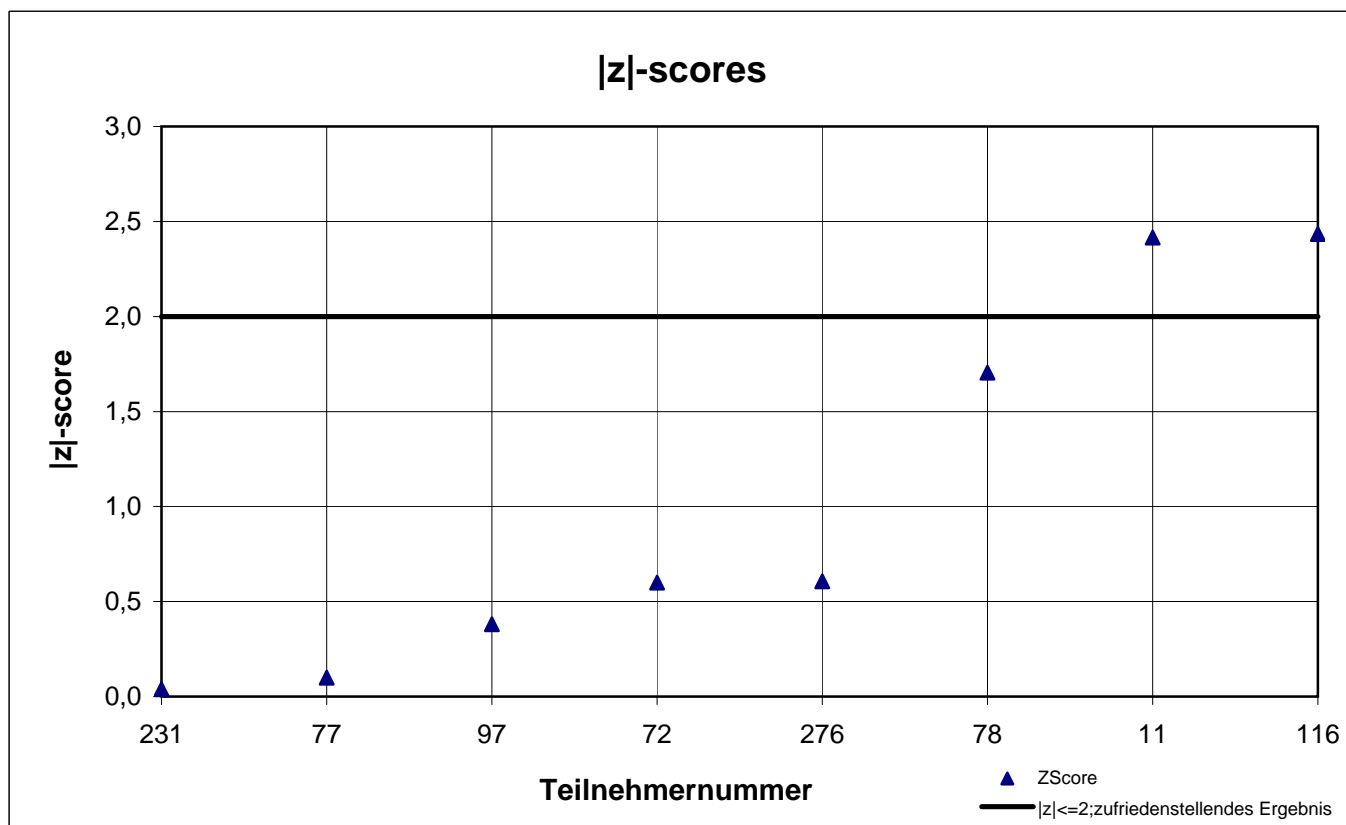
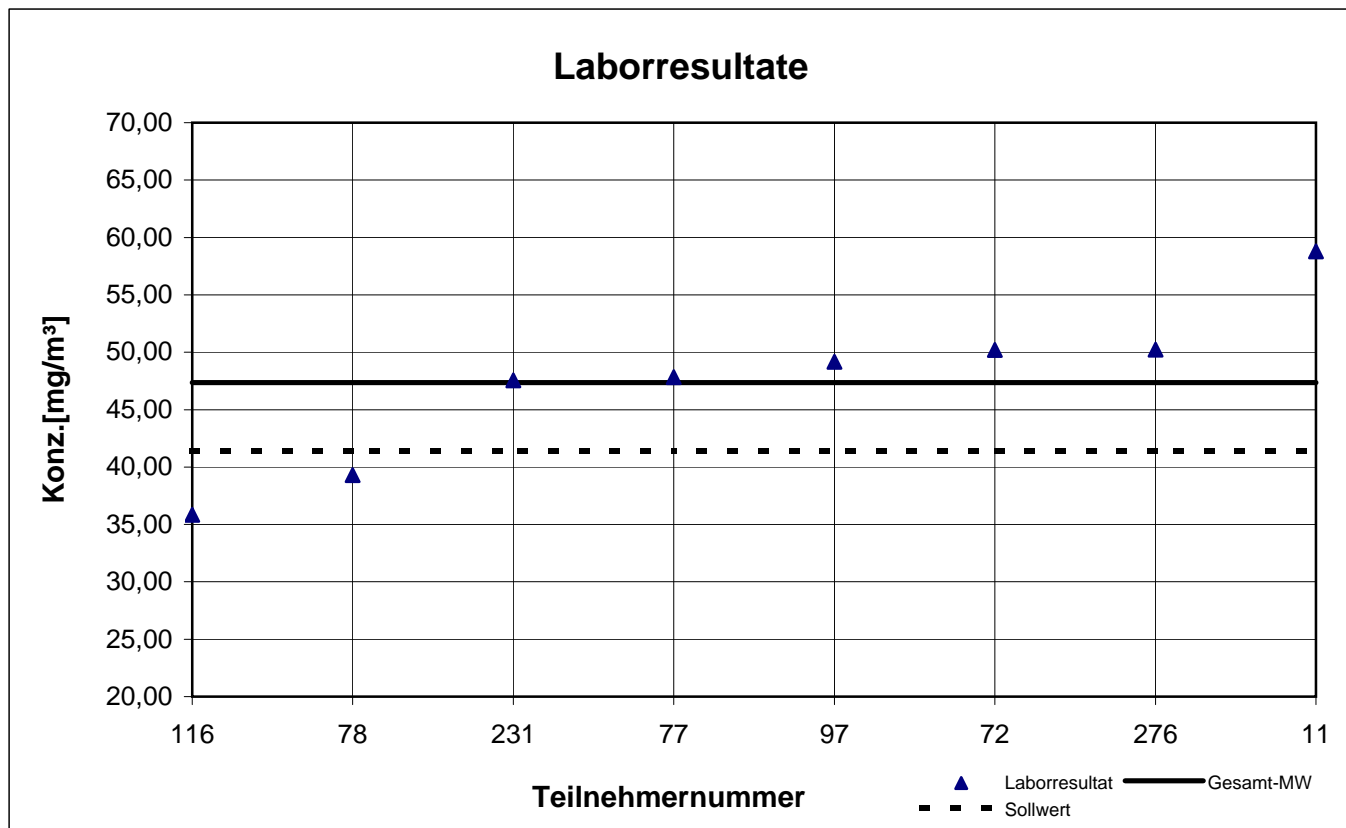
Probe 3

2-Butanol



Probe 3

2-Butoxyethanol



Probe 3

Ethanol

