

results sample 1

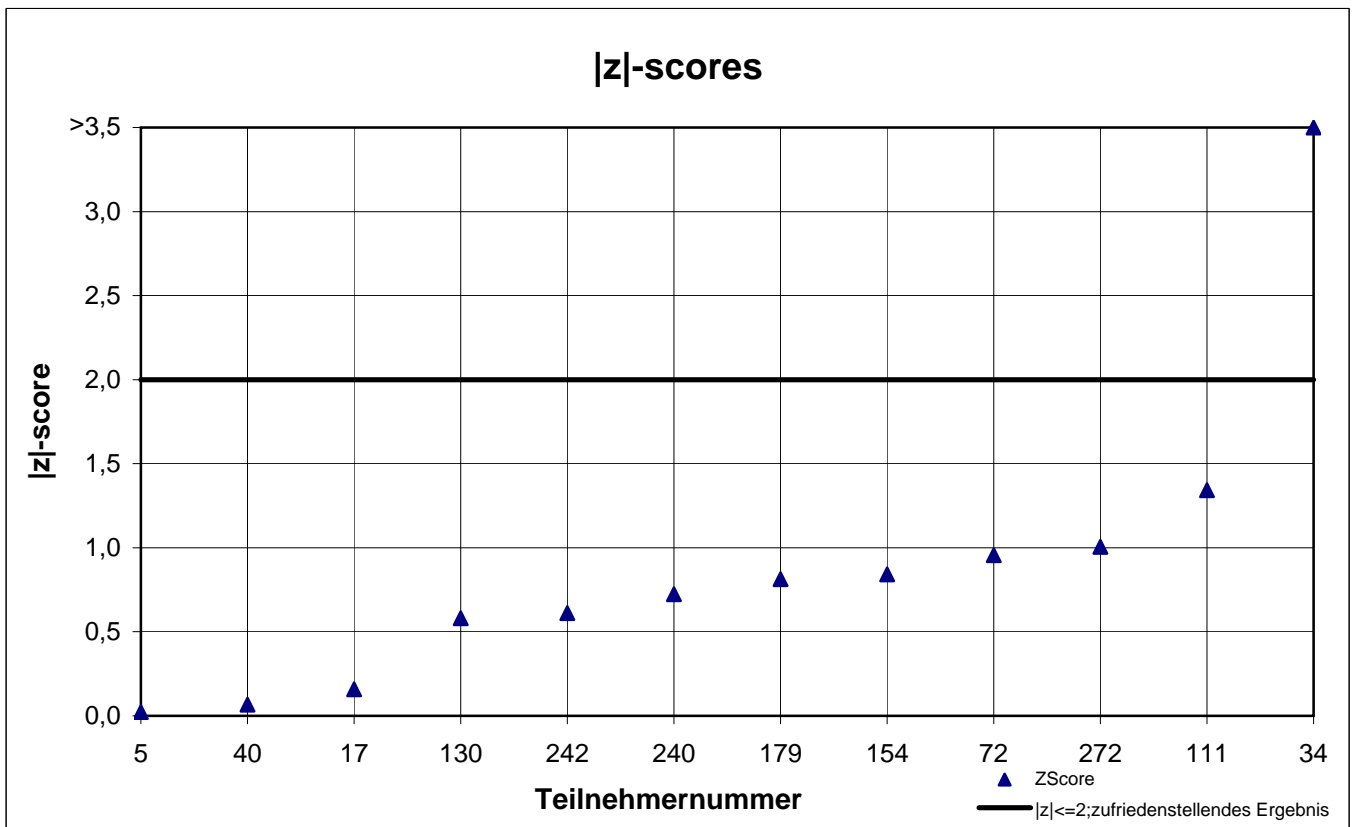
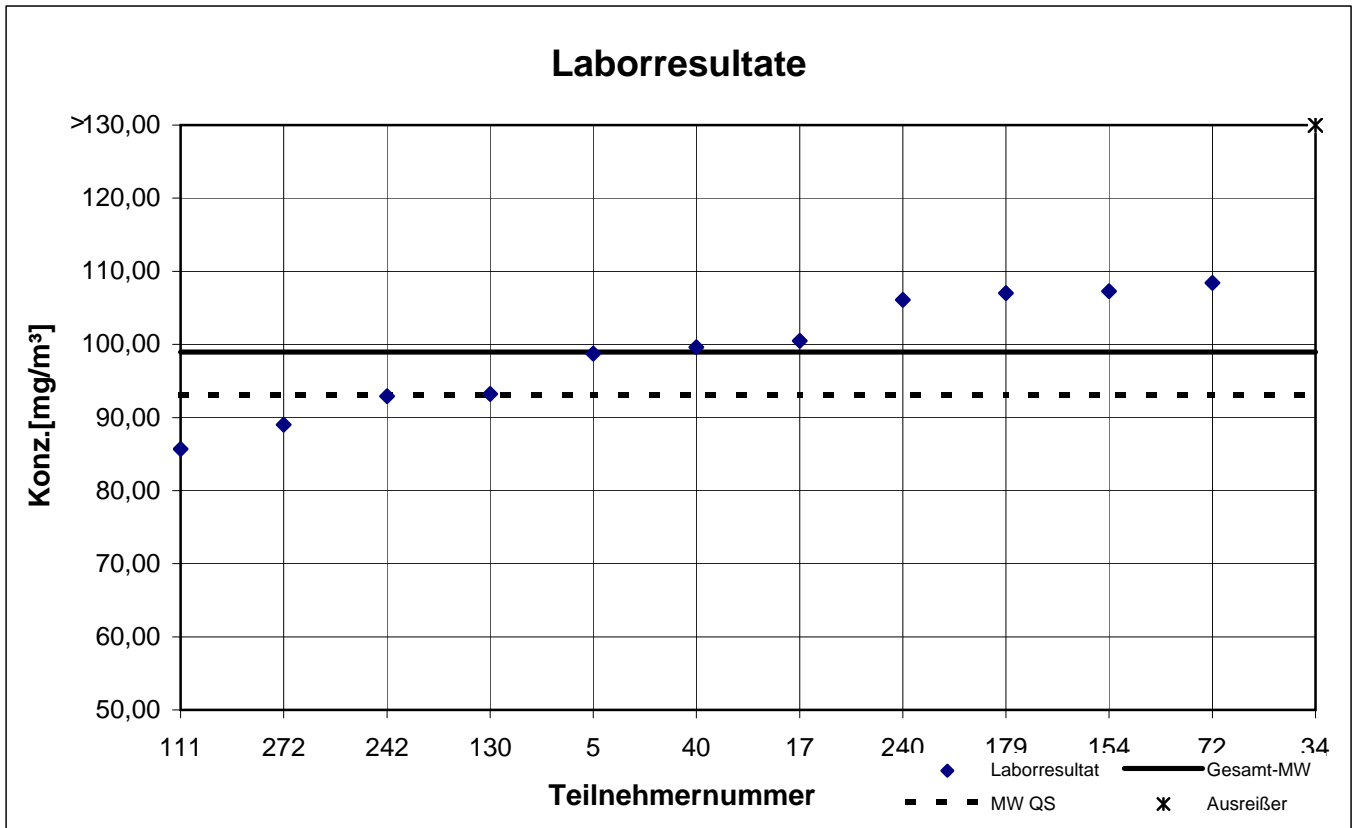
participant number	2-Butanon		4-Methyl-2-pentanone		Cyclohexanone		Cyclopentanone	
	result [mg/m ³]	z - score	result [mg/m ³]	z - score	result [mg/m ³]	z - score	result [mg/m ³]	z - score
5	98,7	0,0	52,27	0,1	34,87		69,14	1,2
17	100,5	0,2	48,67	0,6	47,63		87,97	1,1
34	205,5	10,8	100,5	9,5	182,9		113,6	4,4
40	99,6	0,1	56,00	0,9	41,70		98,00	2,4
72	108,4	1,0	57,20	1,1	46,80		98,20	2,4
111	85,7	1,3	44,67	1,3	78,33		39,67	5,0
130	93,20	0,6	59,30	1,5	53,70		84,57	0,7
154	107,3	0,8	51,88	0,1	36,00		89,71	1,4
179	107,0	0,8	63,40	2,3	28,66		54,56	3,1
240	106,1	0,7	41,30	2,0	31,10		73,50	0,7
242	92,9	0,6	46,46	1,0	24,29		52,60	3,3
272	89,0	1,0	45,60	1,1	66,10		81,50	0,3

marked fields are outliers!

	2-Butanon	4-Methyl-2-pentanone	Cyclo-hexanone	Cyclo-pentanone
mean c_k [mg / m ³]	98,94	51,52	36,38	78,97
standard deviation S_k [mg/m ³]	7,888	6,891		16,274
relative standard deviation [%]	7,97	13,37		20,61
"true result" [mg/m ³]	93,10	46,10	35,80	83,20

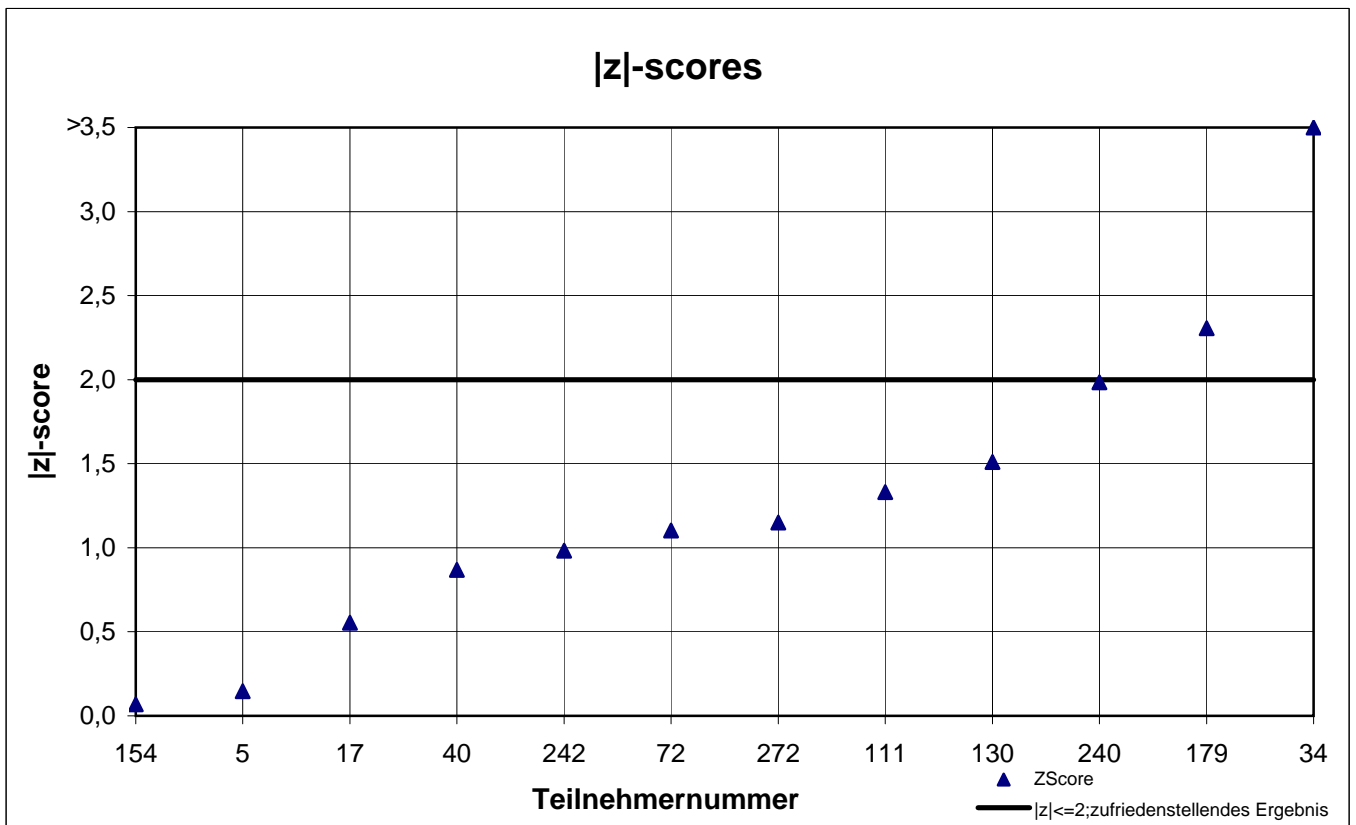
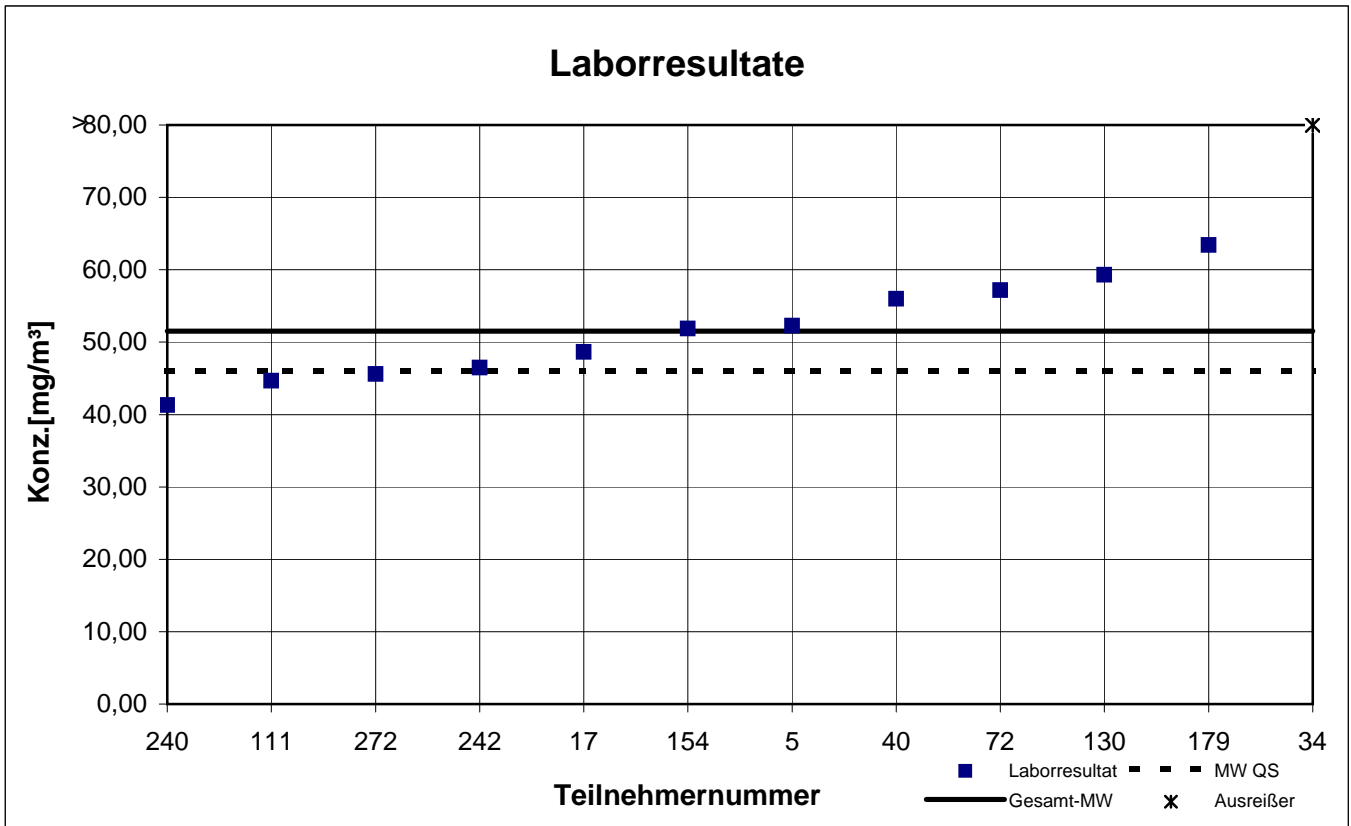
Probe 1

2-Butanon



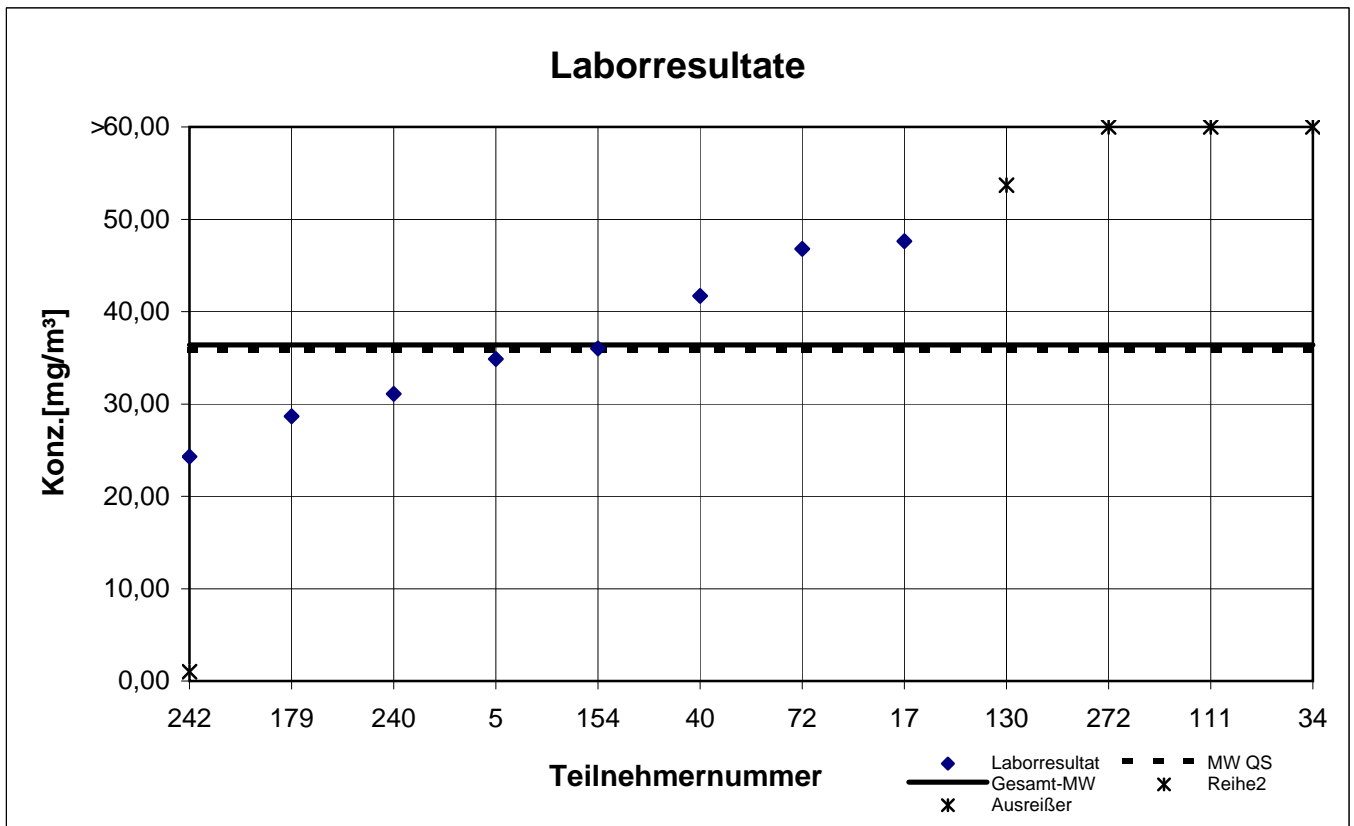
Probe 1

4-Methyl-2-pentanon



Probe 1

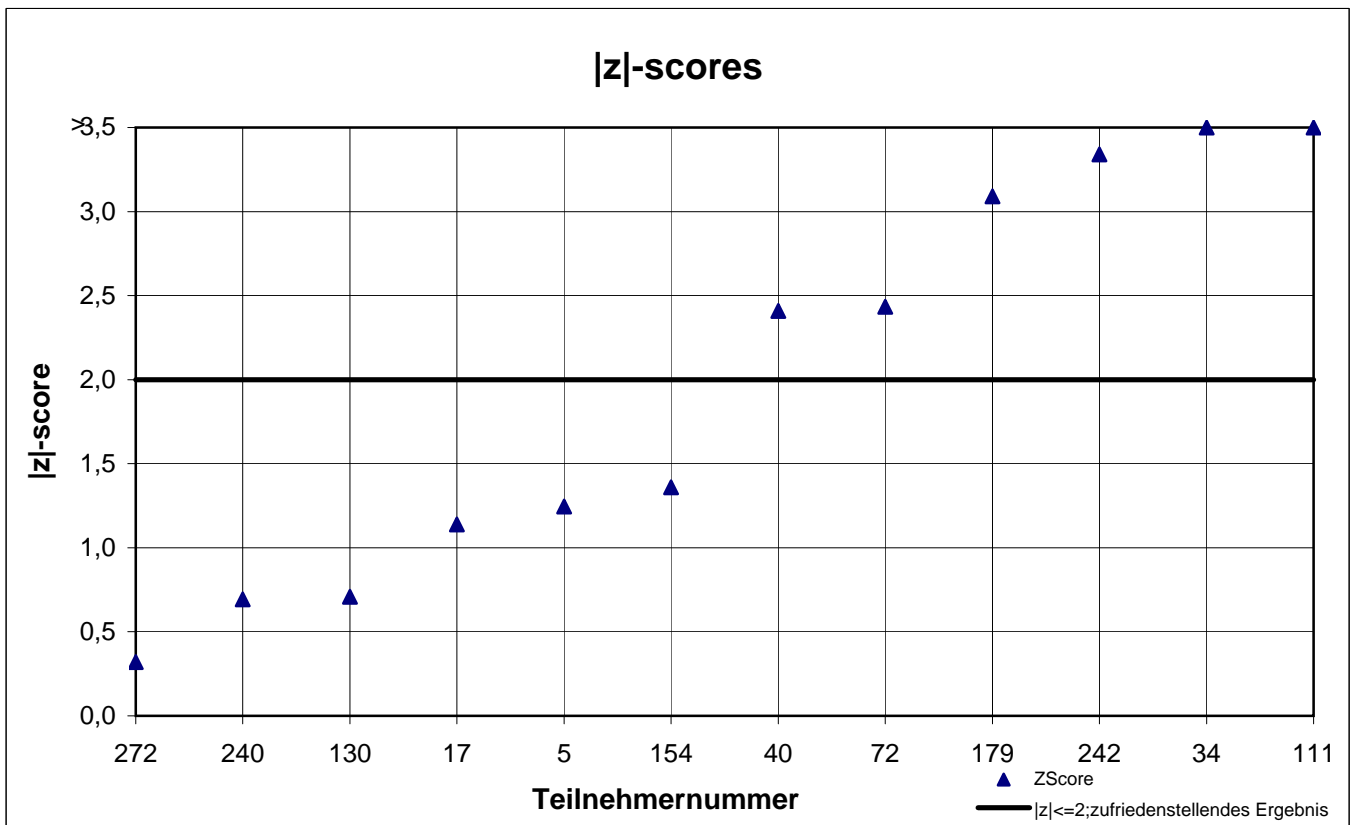
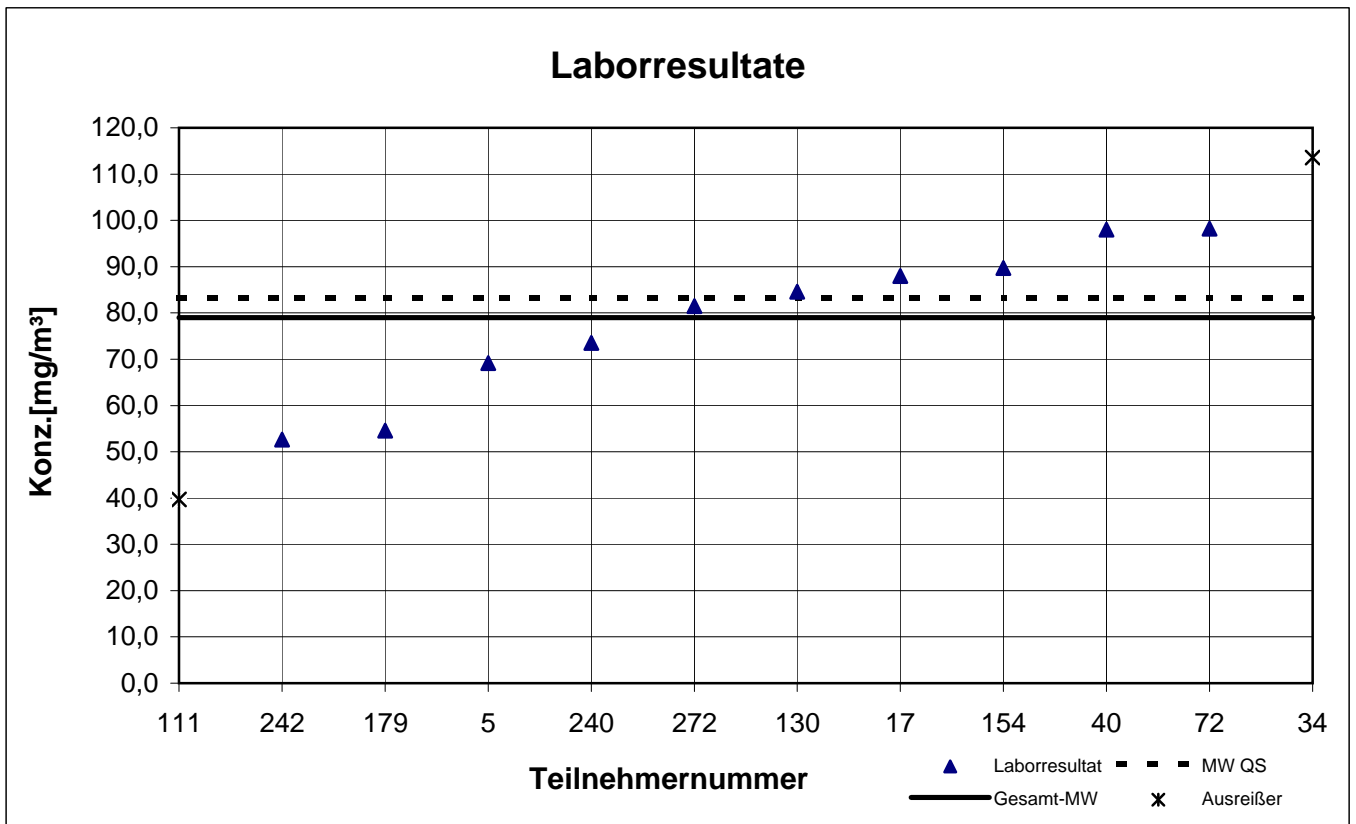
Cyclohexanon



keine z-score-Auswertung (s. Anschreiben)

Probe 1

Cyclopentanon



results sample 2

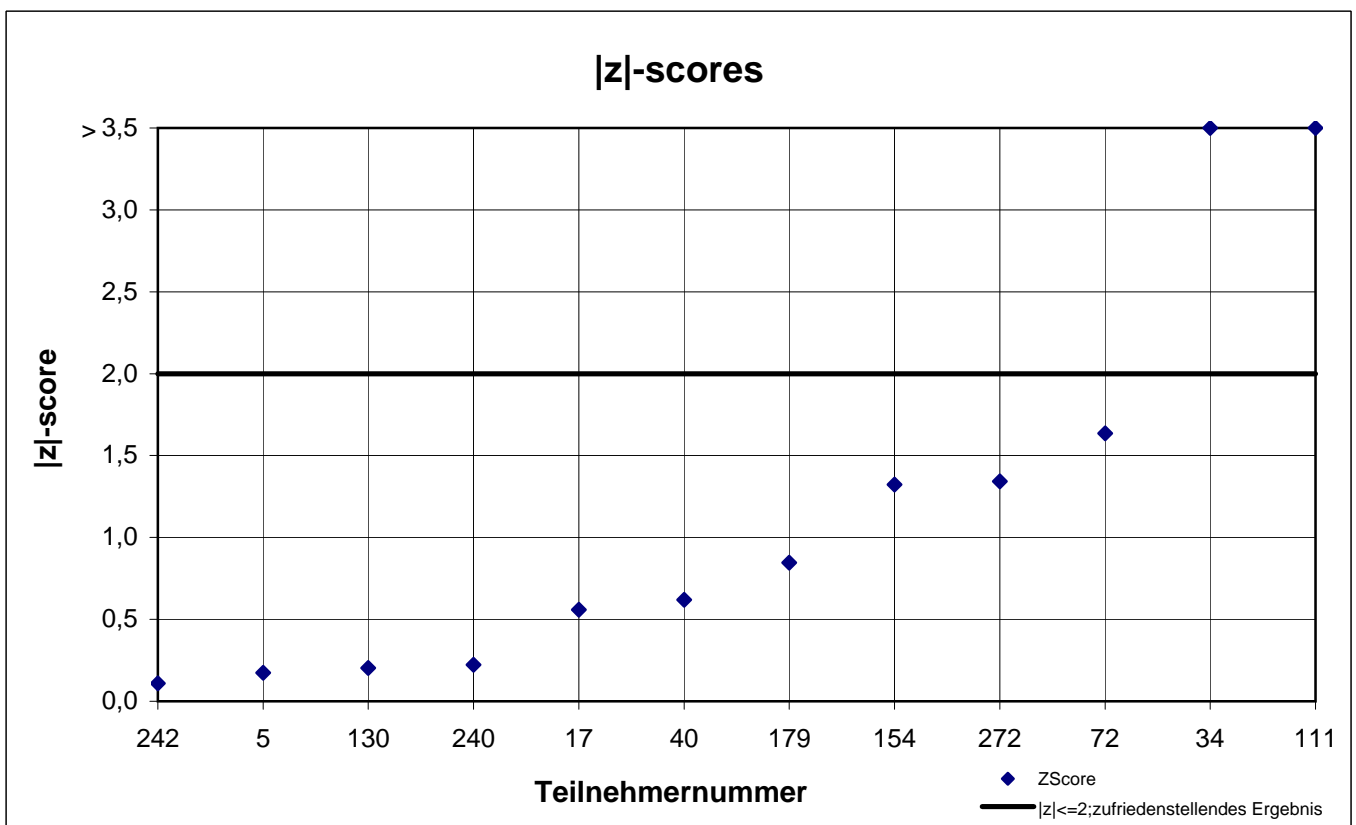
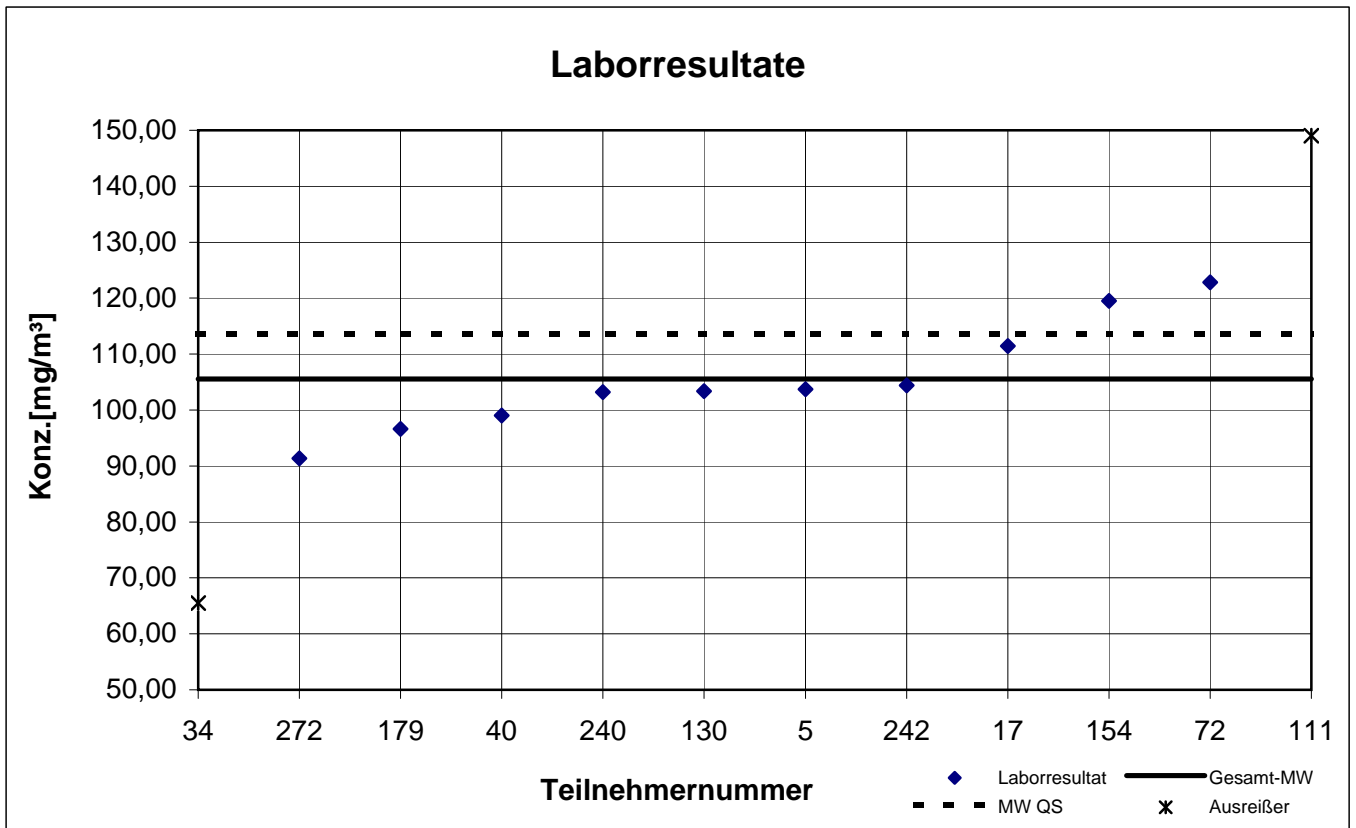
participant number	1-Butanol		Ethylbenzene		n-Butyl acetate		n-Hexane		p-Xylene		Toluene	
	result [mg/m ³]	z - score	result [mg/m ³]	z - score	result [mg/m ³]	z - score	result [mg/m ³]	z - score	result [mg/m ³]	z - score	result [mg/m ³]	z - score
5	103,7	0,2	100,3	0,0	74,62	0,2	104,9	0,8	53,88	0,1	37,62	0,1
17	111,4	0,6	101,7	0,1	77,27	0,5	86,50	1,1	50,83	0,5	35,73	0,4
34	65,5	3,8	84,4	1,6	65,4	1,1	70,00	2,8	48,10	1,0	34,00	0,9
40	99,0	0,6	97,7	0,3	71,6	0,2	94,20	0,3	52,60	0,1	36,60	0,2
72	122,8	1,6	107,6	0,7	77,0	0,5	105,4	0,9	58,00	0,9	39,00	0,5
111	149,0	4,1	108,0	0,7	84,3	1,5	115,0	1,9	60,00	1,3	34,67	0,7
130	103,4	0,2	100,2	0,0	73,4	0,0	96,27	0,1	59,43	1,1	46,77	2,6
154	119,5	1,3	101,9	0,1	76,65	0,5	94,47	0,2	53,81	0,1	36,93	0,1
179	96,62	0,8	100,3	0,0	71,19	0,3	90,47	0,7	53,45	0,0	39,67	0,7
240	103,2	0,2	106,7	0,6	73,20	0,0	116,0	2,0	55,20	0,4	35,90	0,3
242	104,4	0,1	84,87	1,6	61,16	1,7	91,40	0,6	43,09	1,9	33,87	0,9
272	91,37	1,3	112,1	1,2	74,10	0,1	287,8	19,7	51,50	0,3	35,37	0,5

marked fields are outliers!

	1-Butanol	Ethylbenzene	n-Butylacetate	n-Hexane	p-Xylene	Toluene
mean c_k [mg / m ³]	105,5	100,5	73,33	96,79	53,32	37,18
standard deviation S_k [mg/m ³]	9,806	8,501	5,892	13,214	4,766	3,521
relative standard deviation [%]	9,29	8,46	8,03	13,65	8,94	9,47
"true result" [mg/m ³]	113,6	101,6	71,80	93,90	52,70	34,60

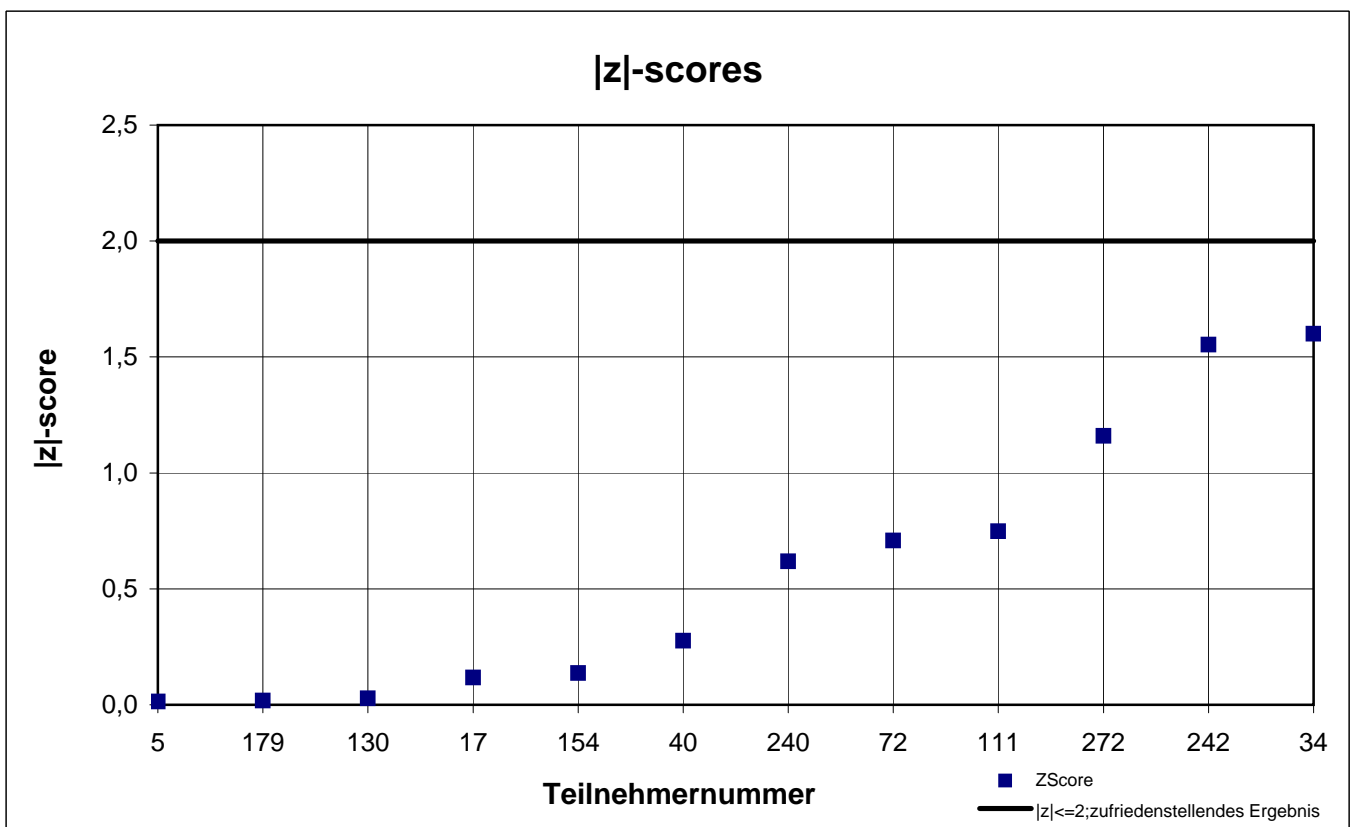
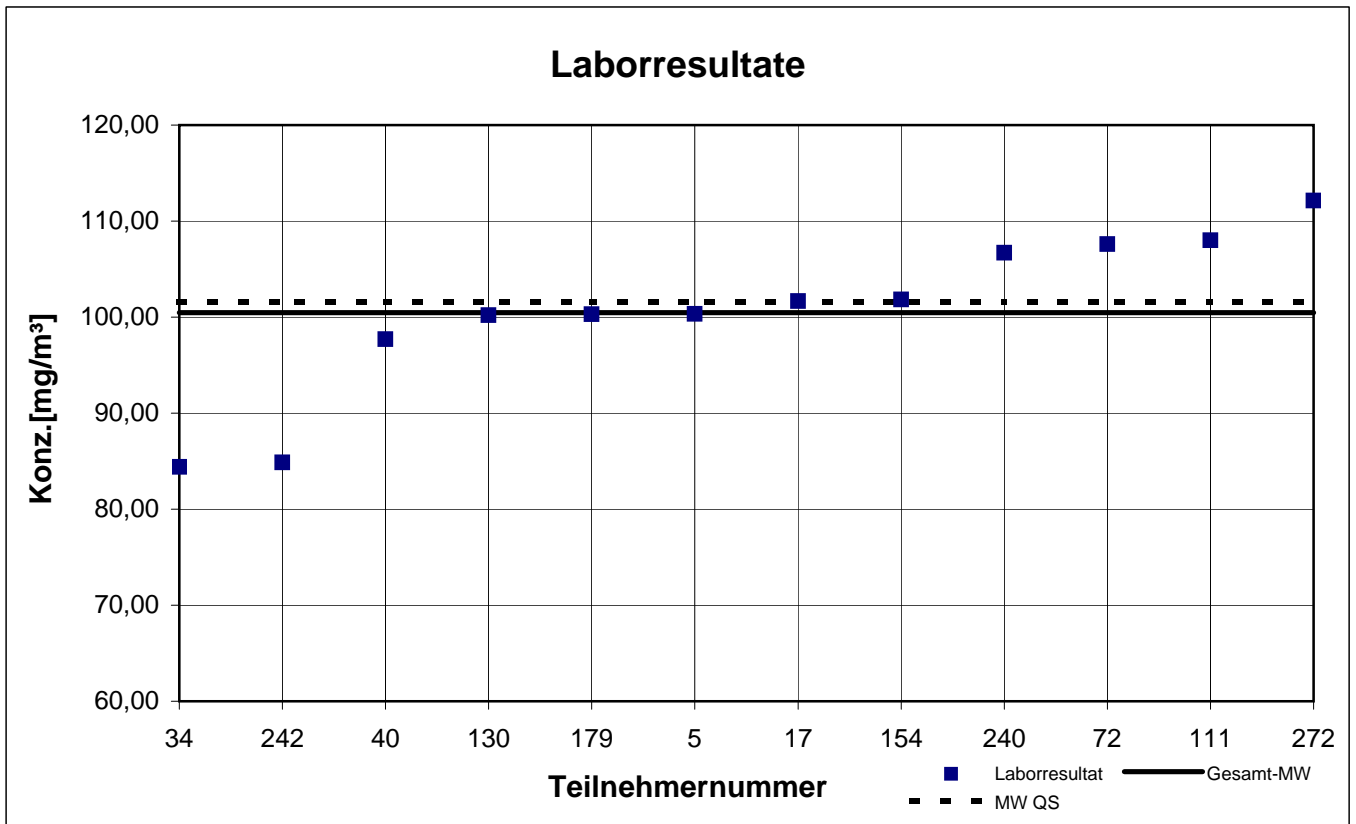
Probe 2

1-Butanol



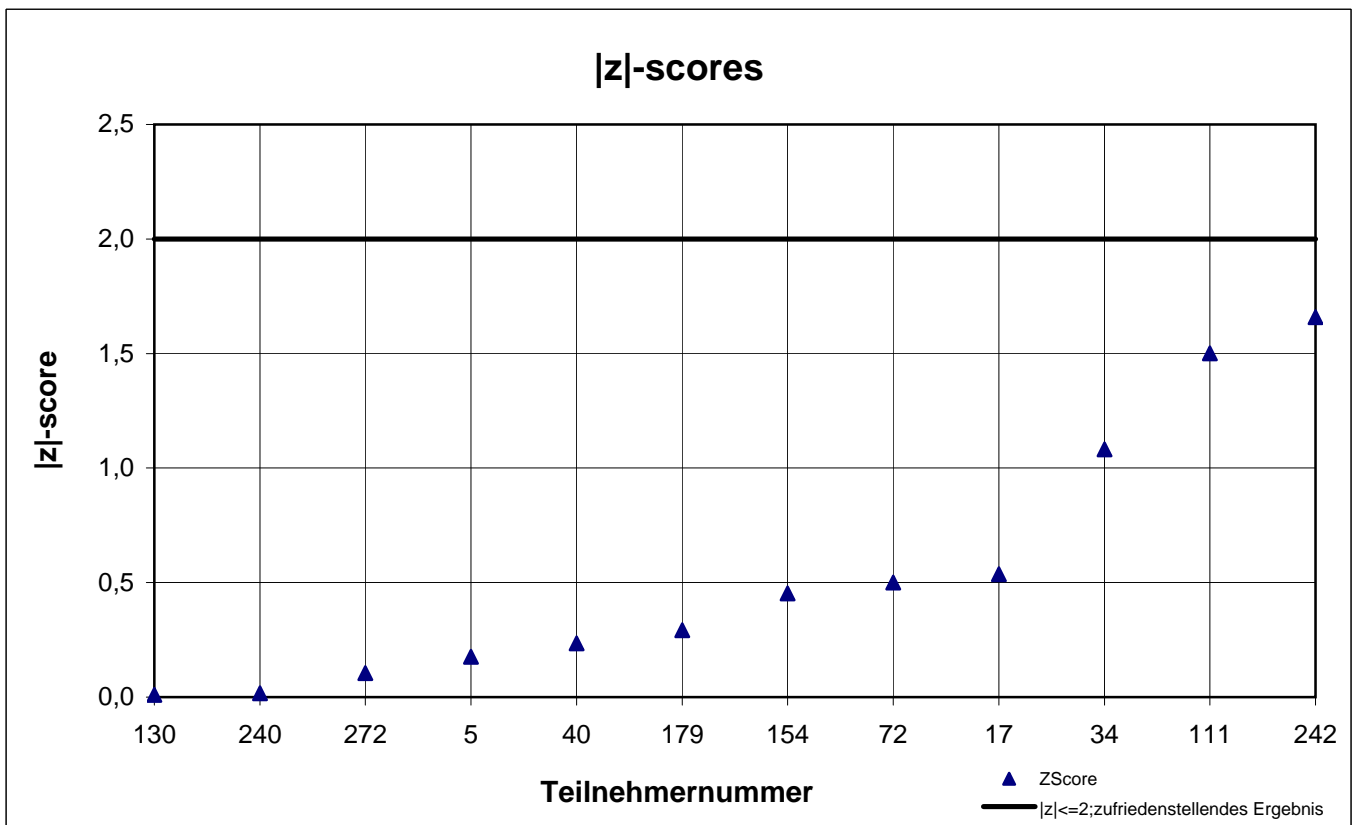
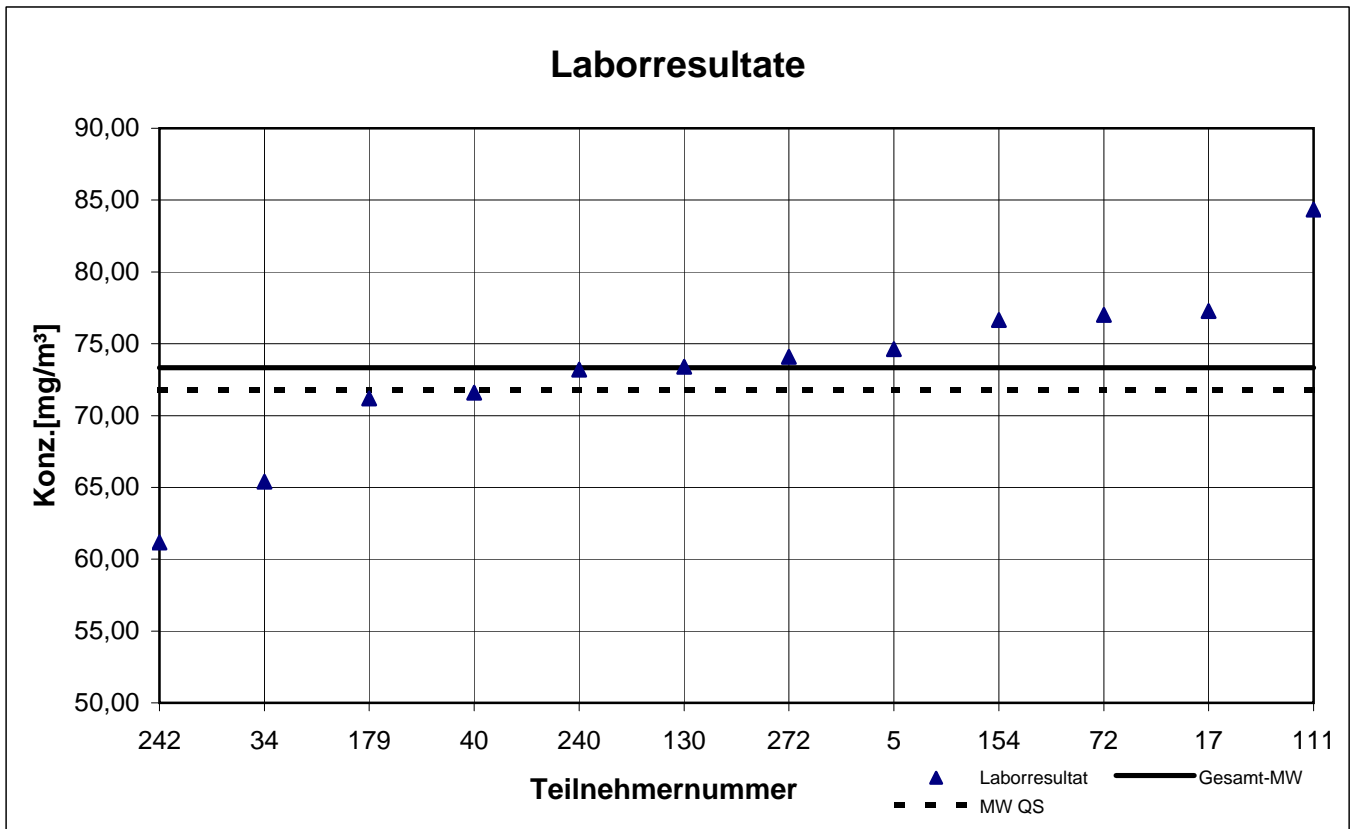
Probe 2

Ethylbenzol



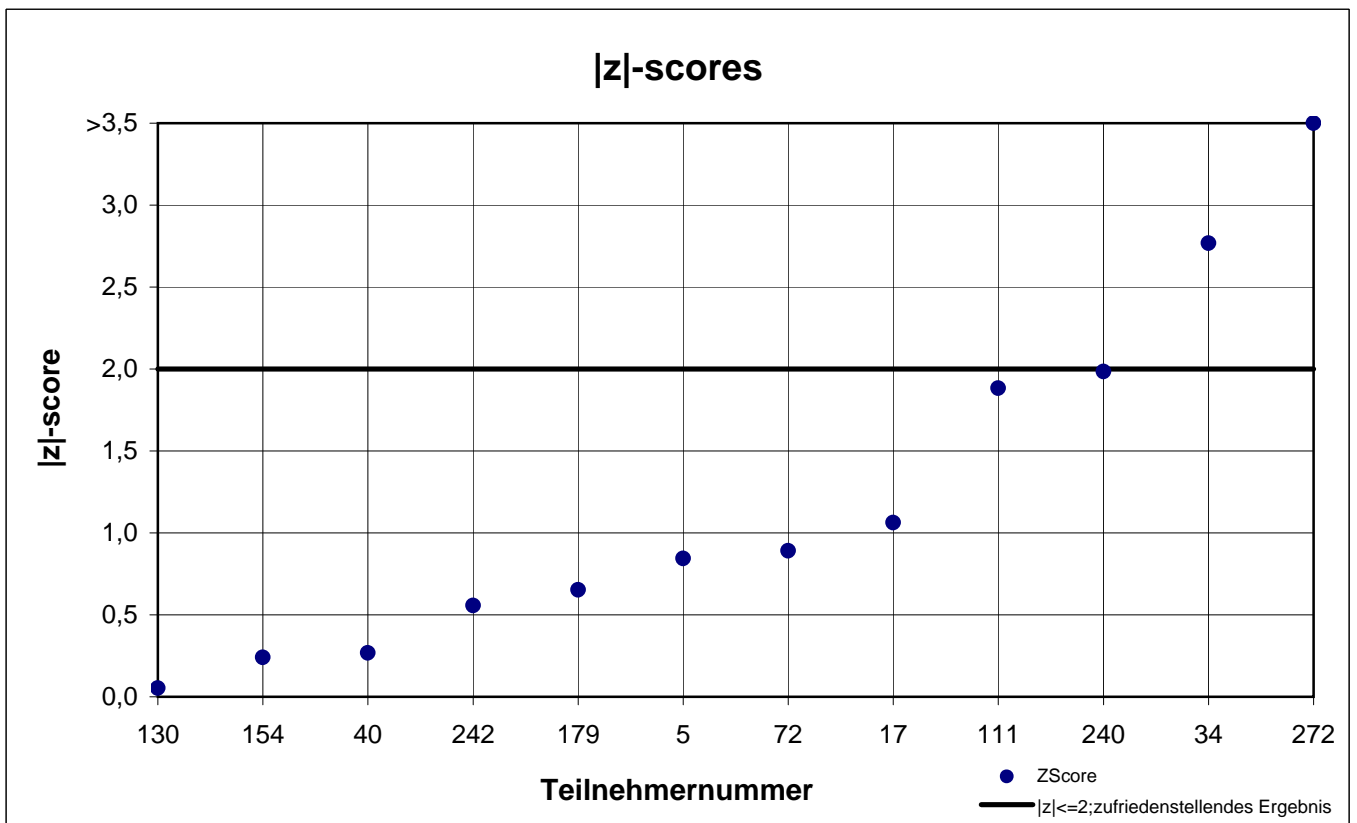
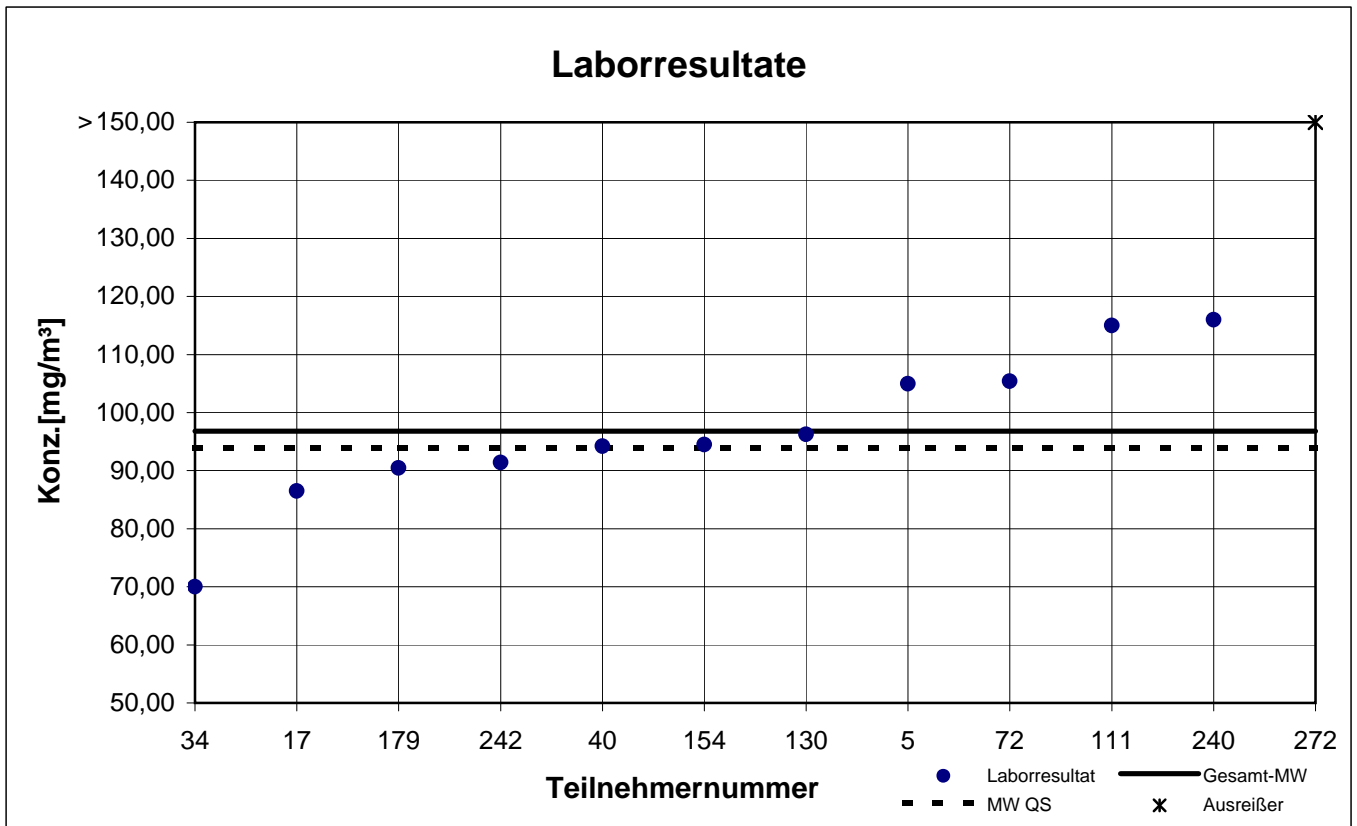
Probe 2

n-Butylacetat



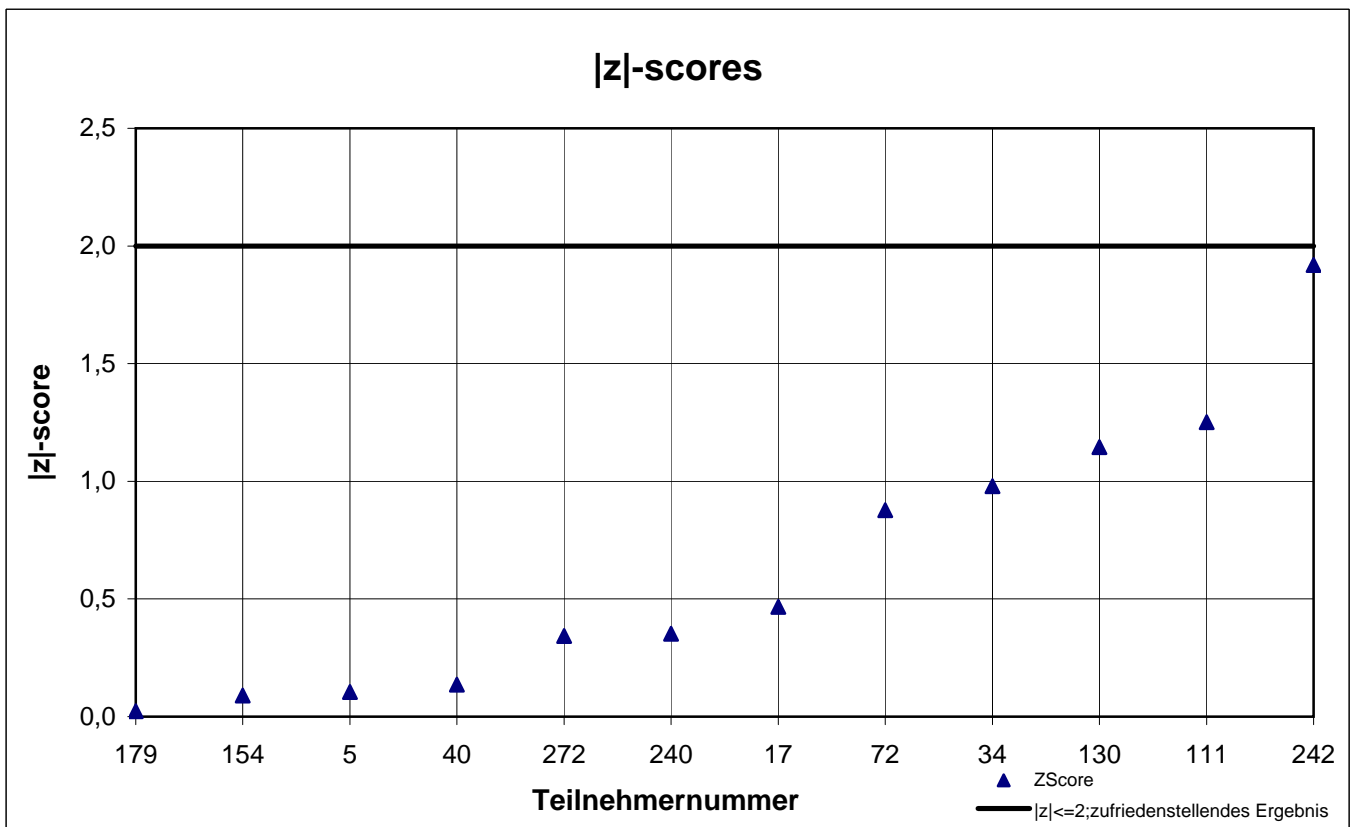
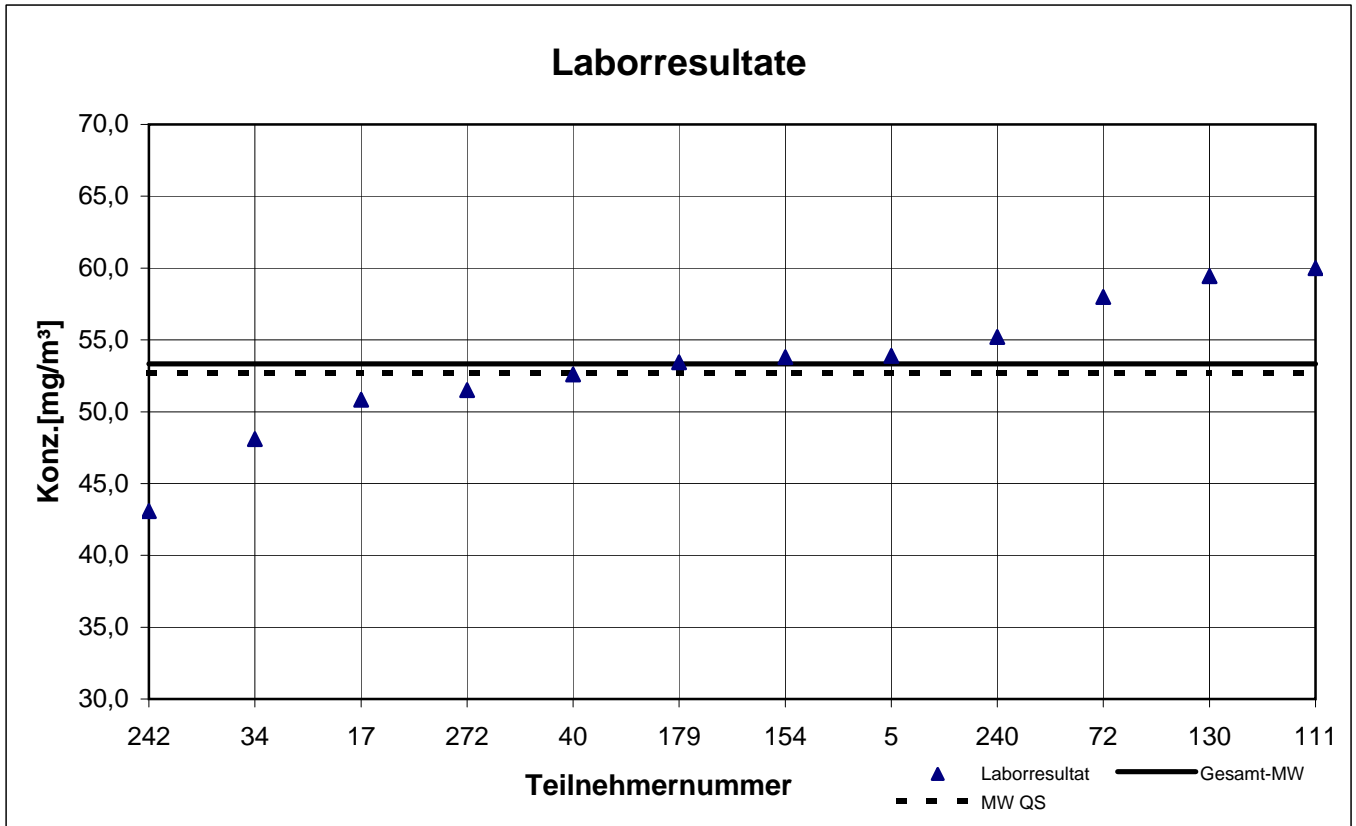
Probe 2

n-Hexan



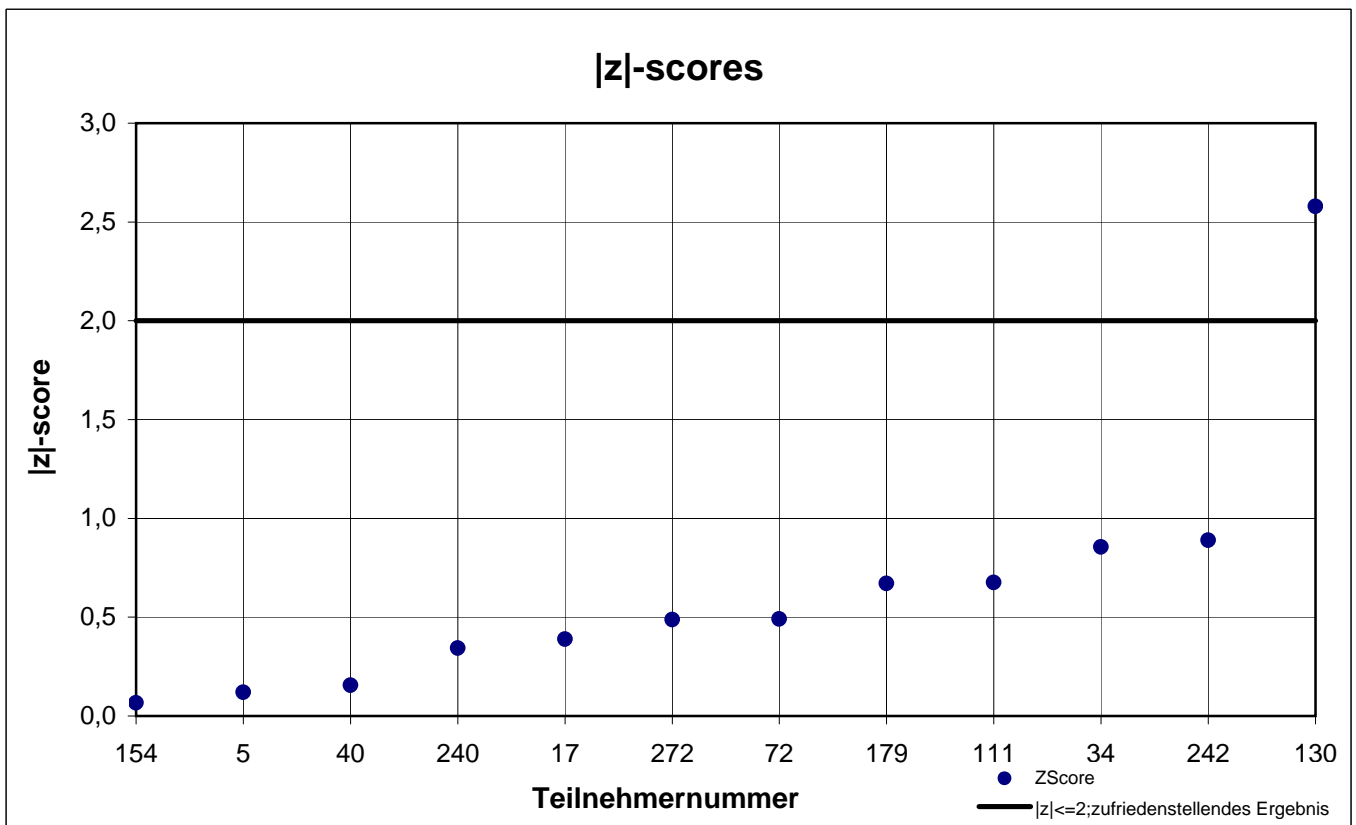
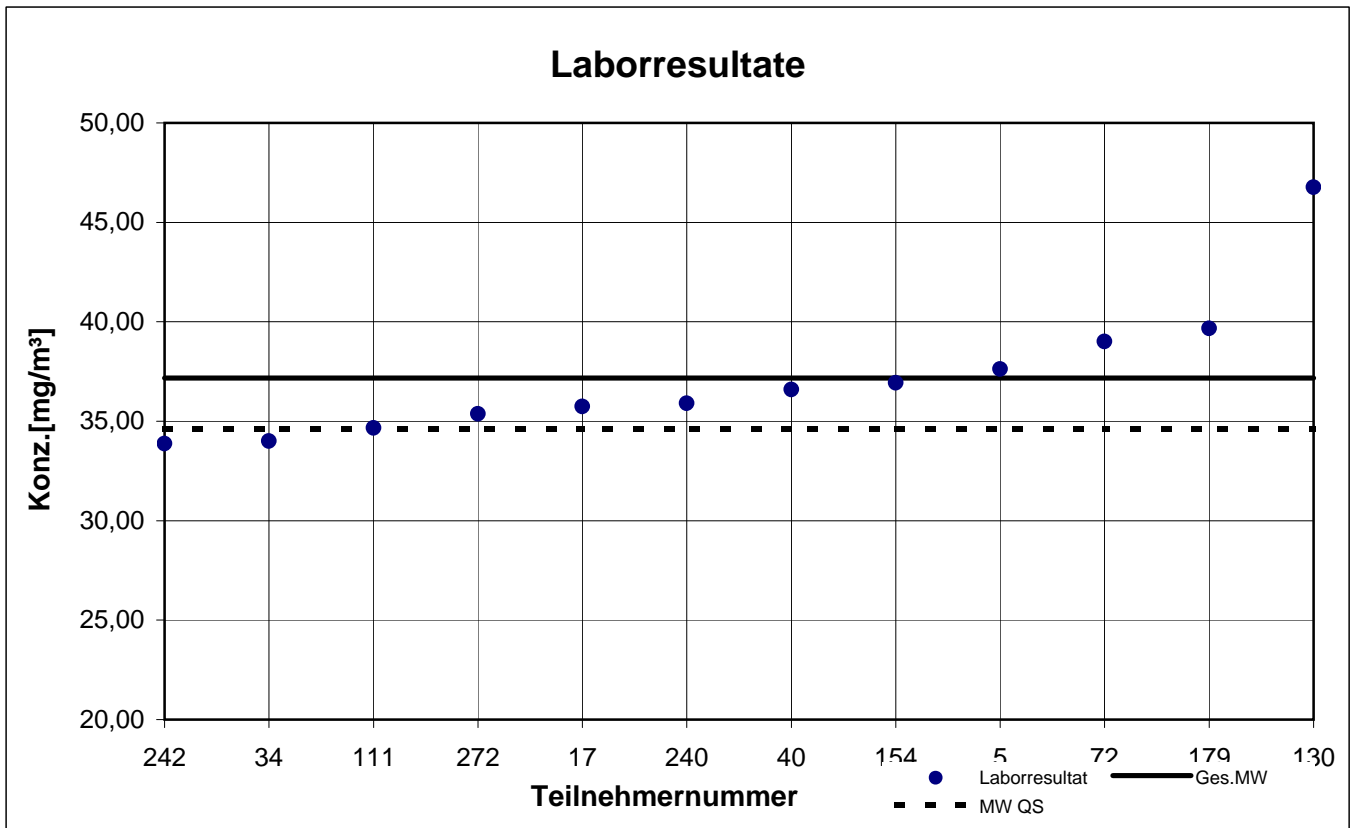
Probe 2

p-Xylol



Probe 2

Toluol



results sample 3

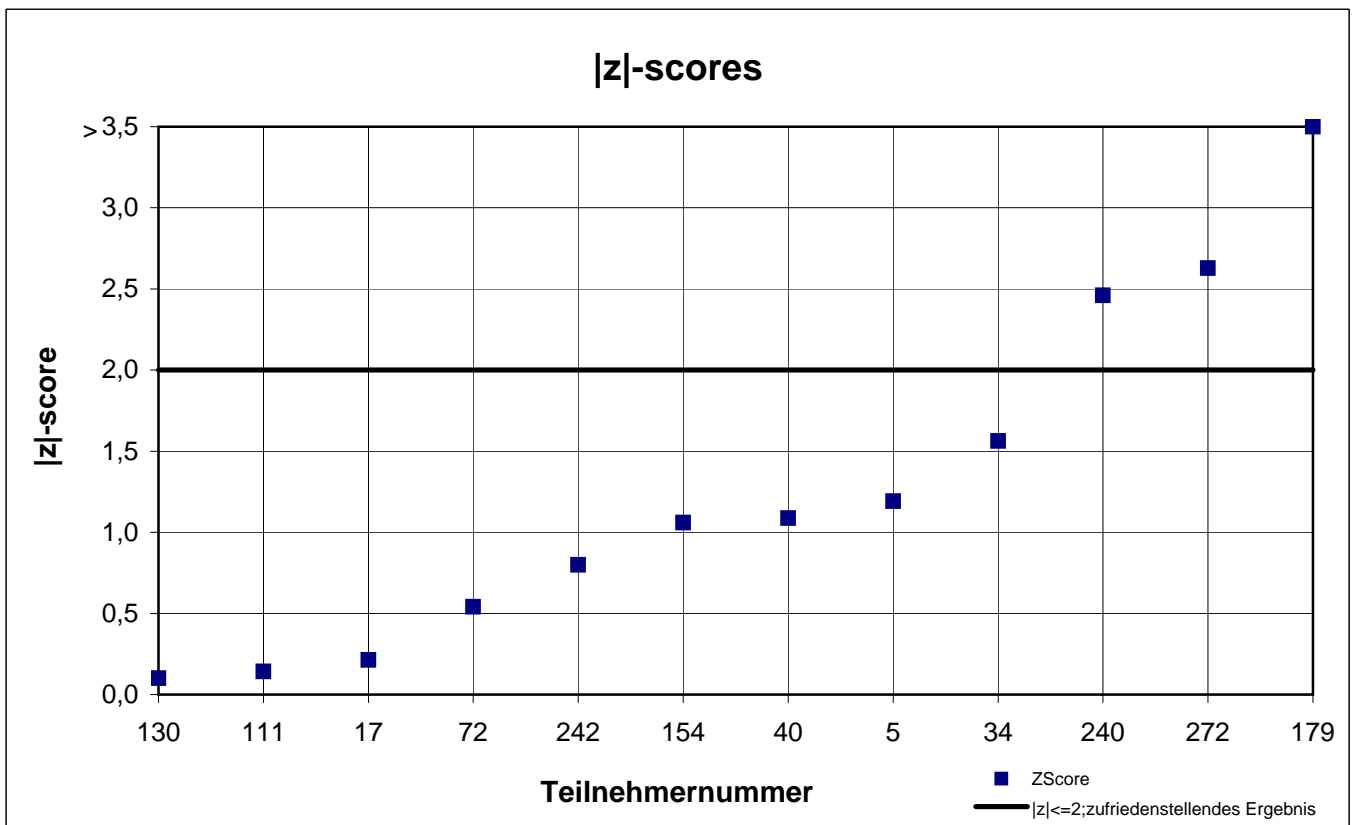
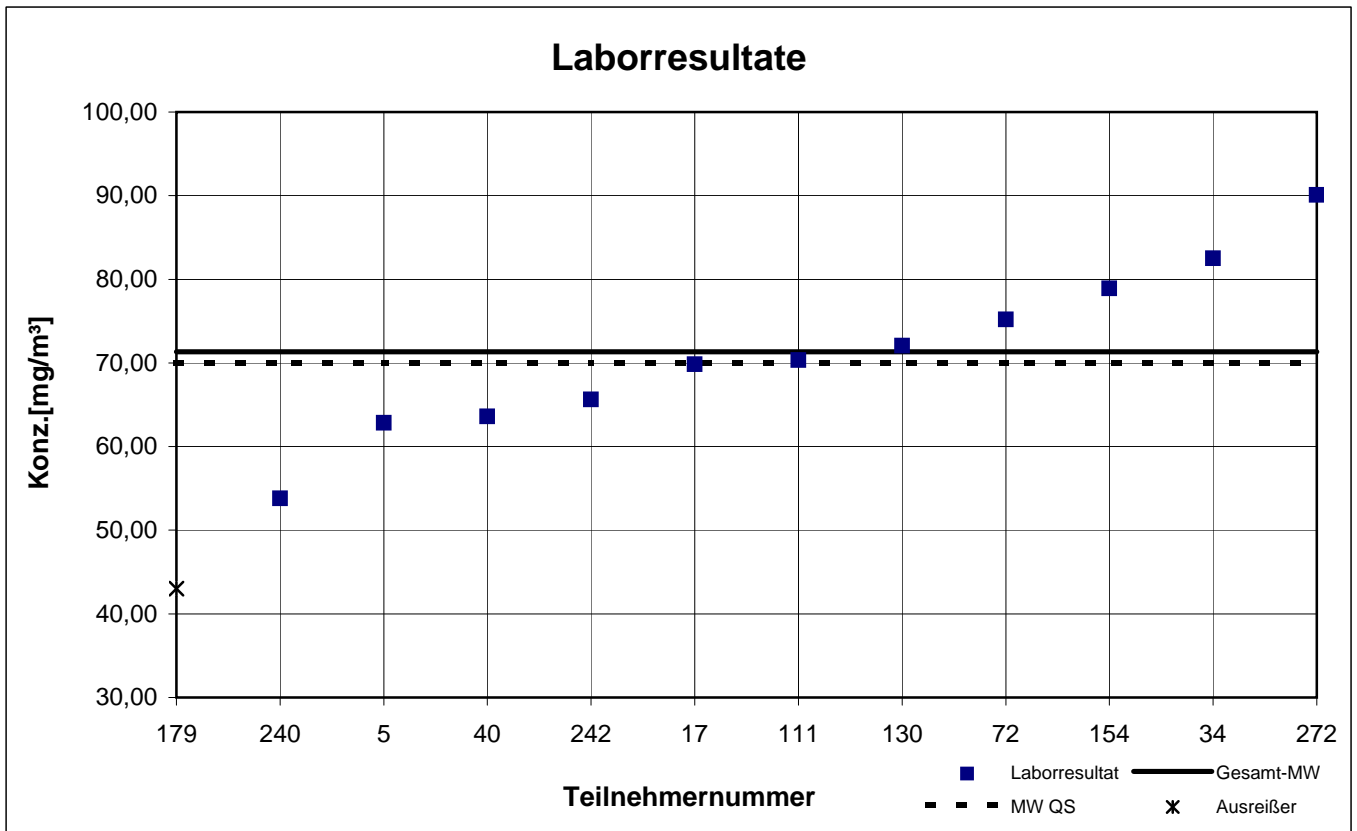
participant number	1-Methoxy-2-propanol		2-Butanol		2-Butoxyethanol		Ethanol	
	result [mg/m ³]	z - score	result [mg/m ³]	z - score	result [mg/m ³]	z - score	result [mg/m ³]	z - score
5	62,85	1,2	64,24	0,7	14,33	0,5	137,2	0,7
17	69,83	0,2	67,17	0,3	15,97	0,6	121,7	0,5
34	82,50	1,6	75,60	1,0	13,60	1,0	144,2	1,2
40	63,60	1,1	62,40	1,0	15,50	0,3	139,7	0,8
72	75,20	0,5	71,50	0,4	18,90	2,5	141,6	1,0
111	70,33	0,1	78,00	1,3	15,00	0,1	102,3	2,1
130	72,07	0,1	60,70	1,2	14,63	0,3	115,5	1,0
154	78,91	1,1	74,61	0,8	17,68	1,7	152,9	1,9
179	43,01	4,0	66,06	0,4	6,660	5,6	105,8	1,8
240	53,80	2,5	55,80	1,9	11,40	2,5	120,1	0,7
242	65,65	0,8	64,72	0,6	0,923	9,4	122,9	0,5
272	90,10	2,6	87,30	2,7	14,20	0,6	141,5	1,0

marked fields are outliers!

	1-Methoxy-2-propanol	2-Butanol	2-Butoxy-ethanol	Ethanol
mean c_k [mg / m ³]	71,35	69,01	15,12	128,8
standard deviation S_k [mg/m ³]	10,122	8,722	2,096	16,244
relative standard deviation [%]	14,19	12,64	13,86	12,61
"true result" [mg/m ³]	70,00	65,60	15,40	131,4

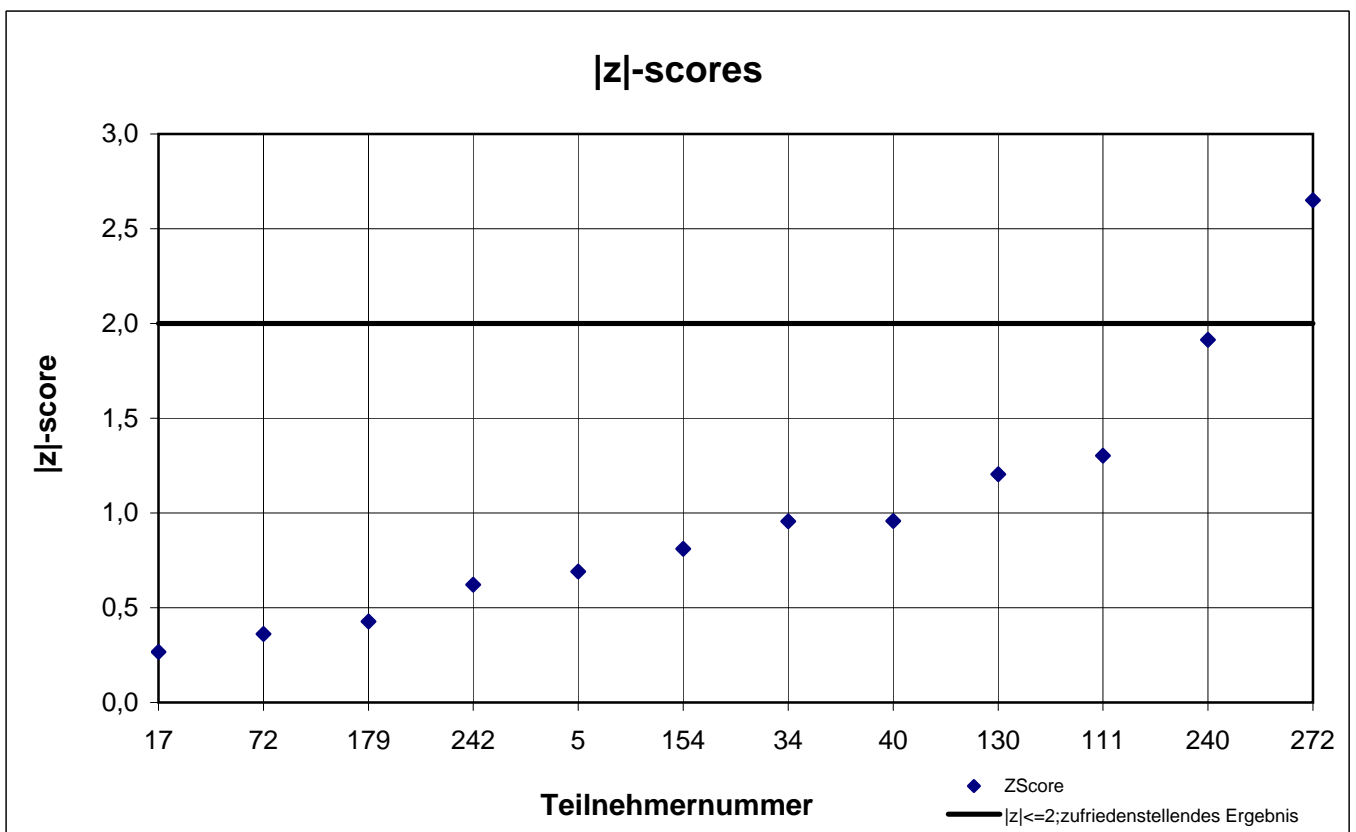
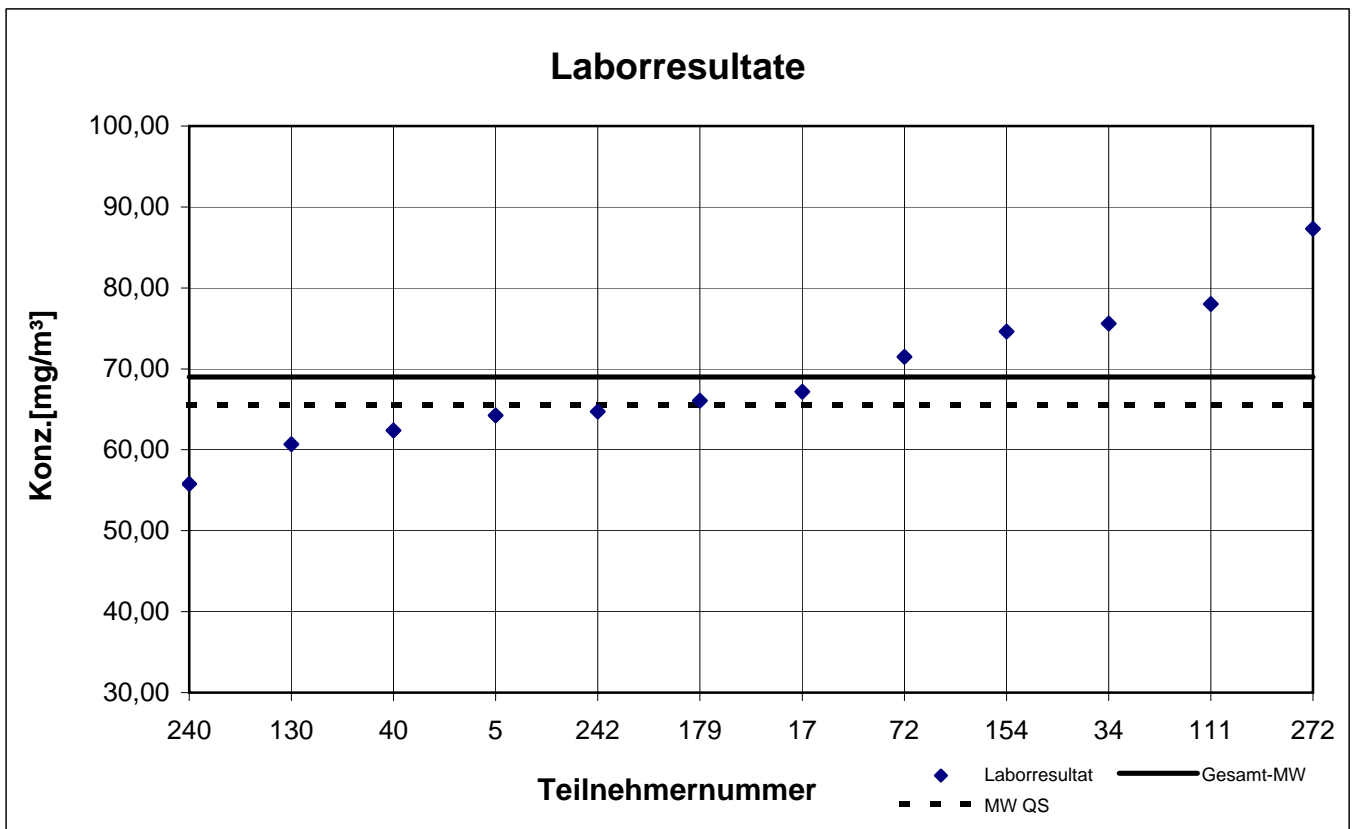
Probe 3

1-Methoxy-2-propanol



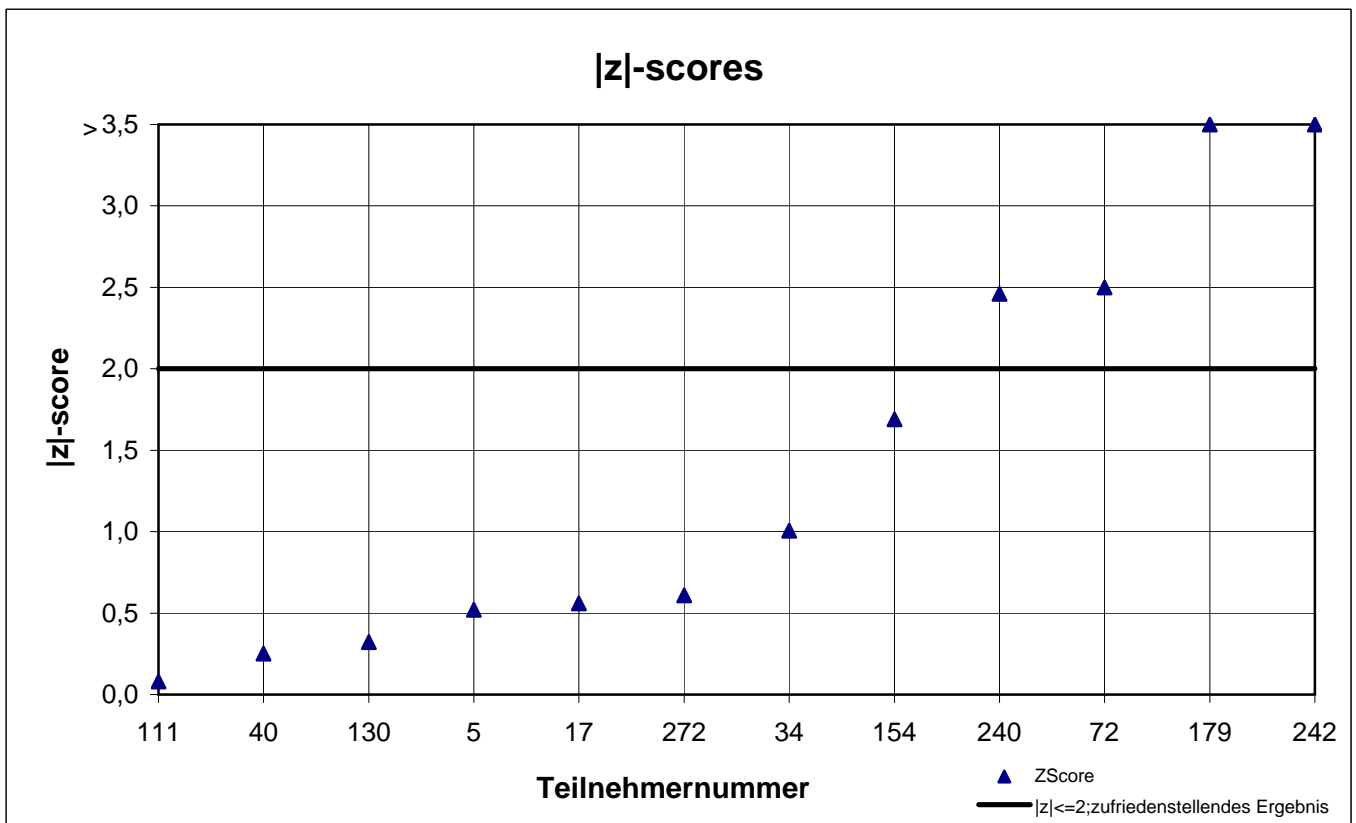
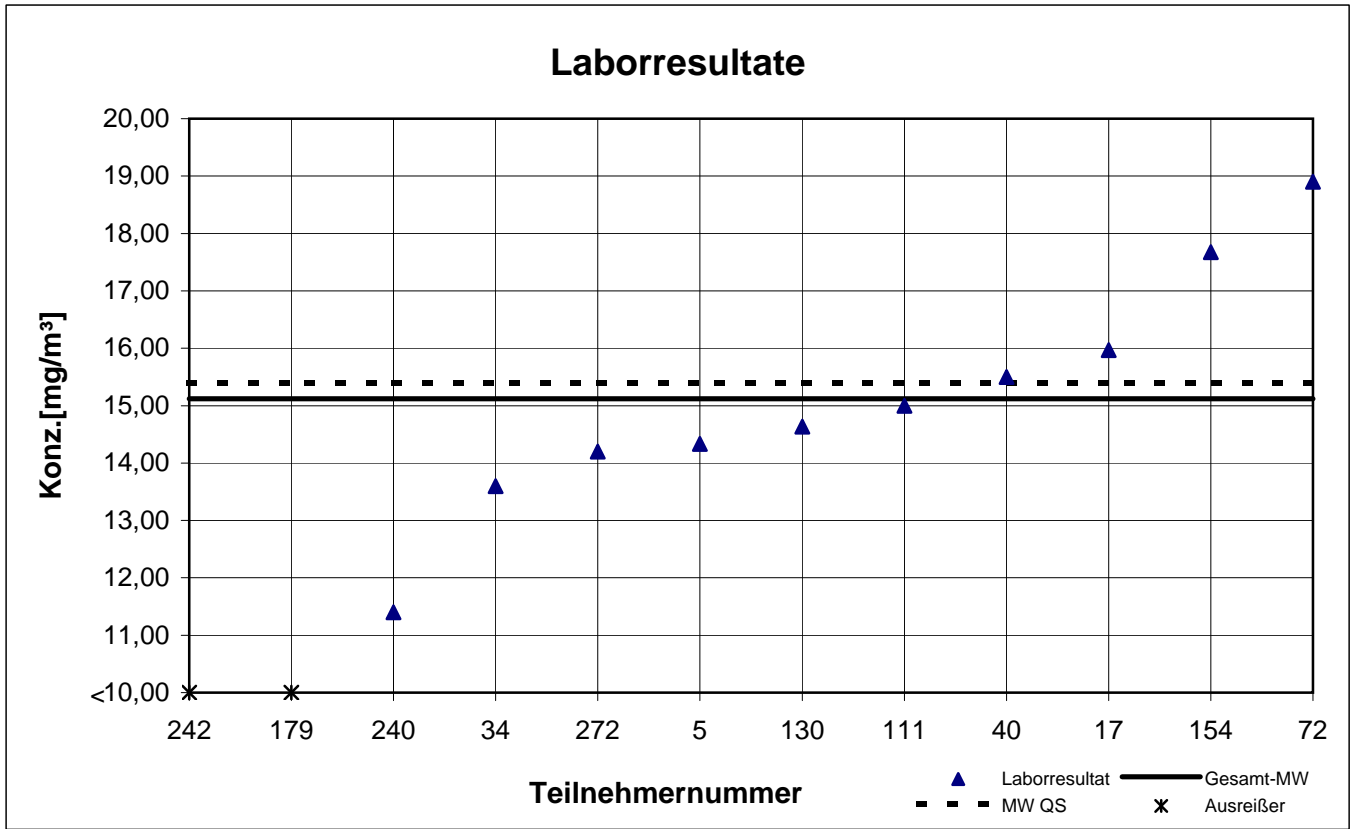
Probe 3

2-Butanol



Probe 3

2-Butoxyethanol



Probe 3

Ethanol

