

results sample 1

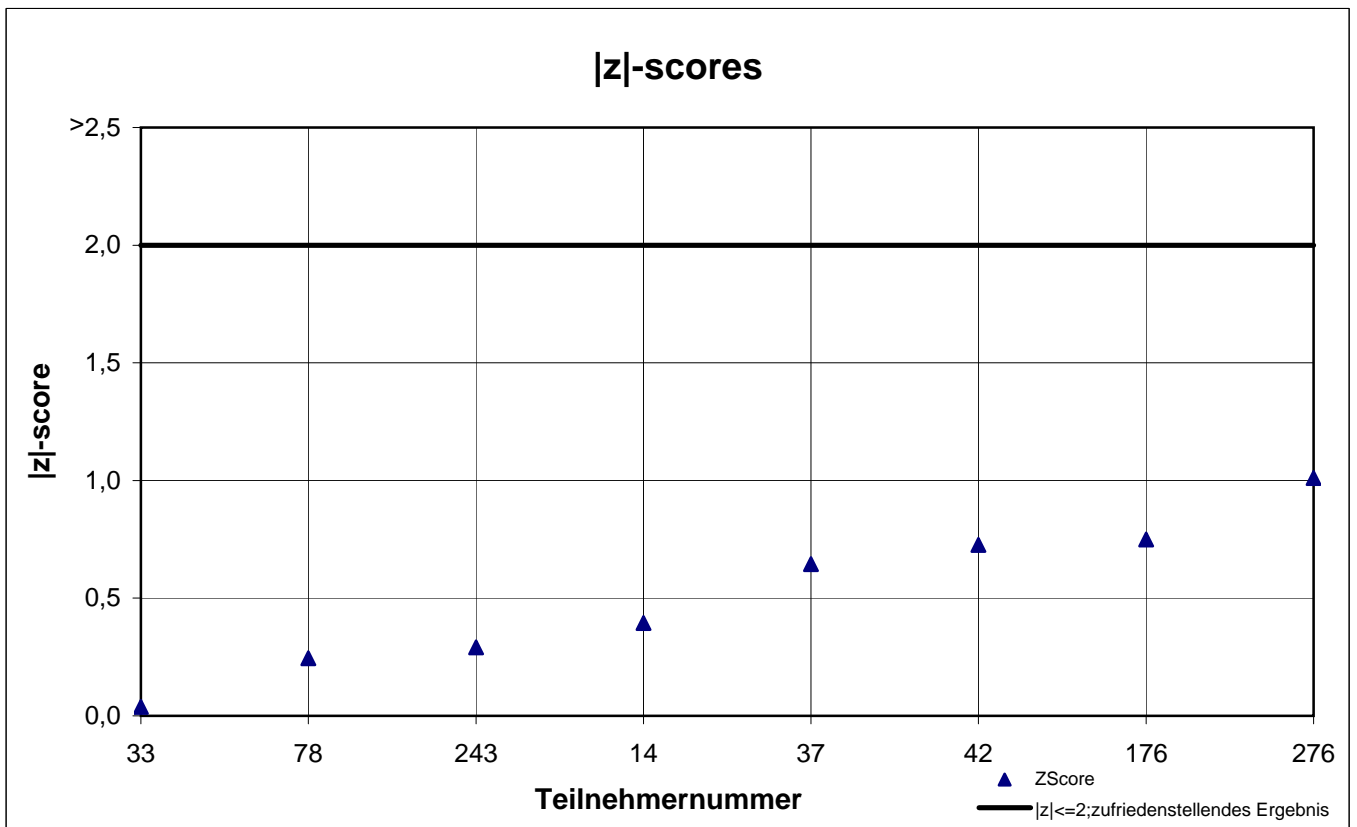
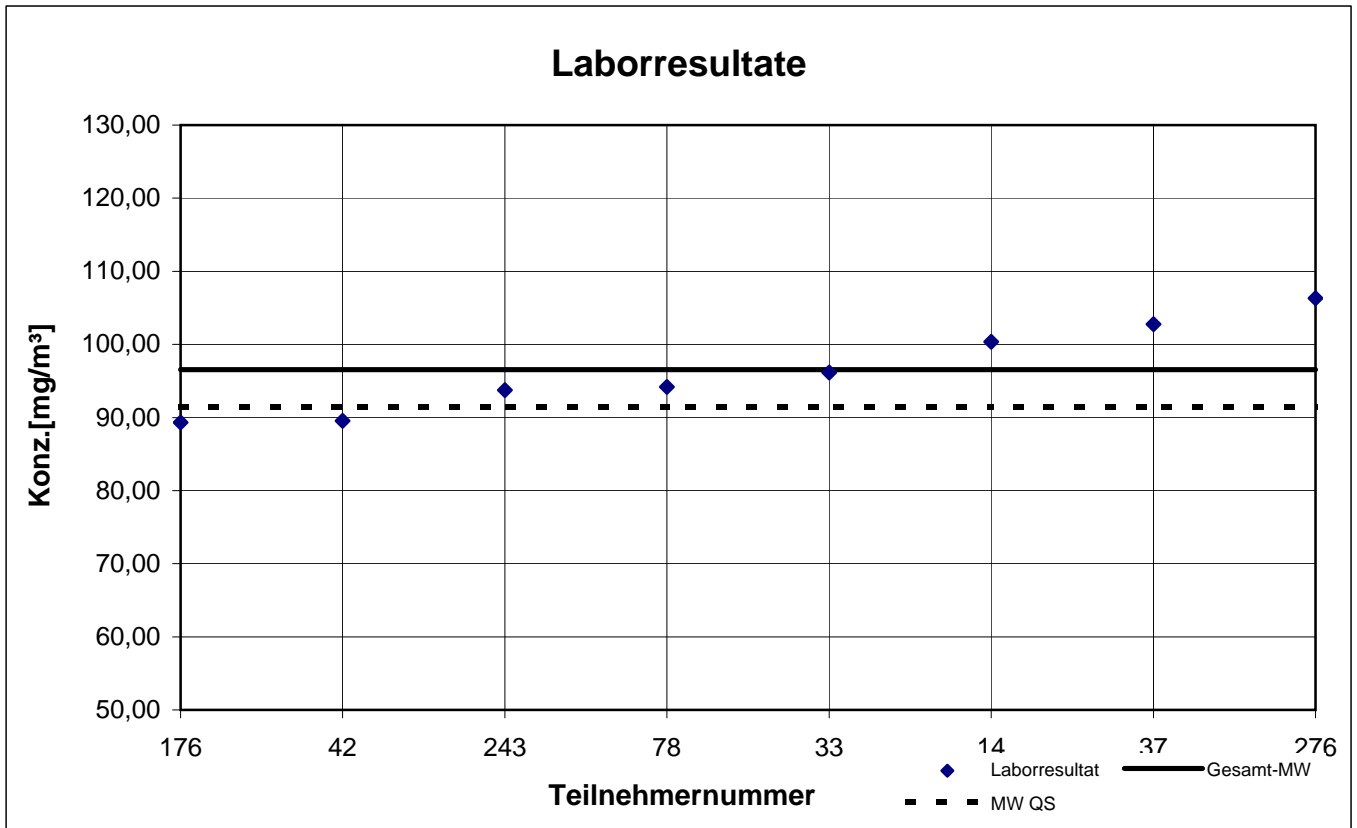
participant number	2-Butanon		4-Methyl-2-pentanone		Cyclohexanone		Cyclopentanone	
	result [mg/m ³]	z - score	result [mg/m ³]	z - score	result [mg/m ³]	z - score	result [mg/m ³]	z - score
14	100,3	0,4	52,45	0,3	105,8	16,4	32,46	6,2
33	96,17	0,0	49,27	0,3	39,33	0,2	90,30	0,6
37	102,8	0,6	50,91	0,0	41,55	0,4	89,99	0,5
42	89,53	0,7	49,29	0,3	39,68	0,1	84,53	0,1
78	94,17	0,2	49,81	0,2	42,17	0,5	88,64	0,4
176	89,30	0,7	48,85	0,4	33,15	1,7	69,85	1,8
243	93,73	0,3	51,10	0,1	34,27	1,4	68,73	2,0
267	k.A.	k.A.	k.A.	k.A.	k.A.	k.A.	k.A.	k.A.
276	106,3	1,0	55,00	0,8	50,23	2,5	106,8	2,5

 marked fields are outliers!

	2-Butanon	4-Methyl-2-pentanone	Cyclo-hexanone	Cyclo-pentanone
mean c_k [mg / m ³]	96,54	50,83	40,06	85,55
standard deviation S_k [mg/m ³]	6,137	2,065	5,659	13,117
relative standard deviation [%]	6,36	4,06	14,13	15,33
"true result" [mg/m ³]	91,40	47,40	37,30	86,50

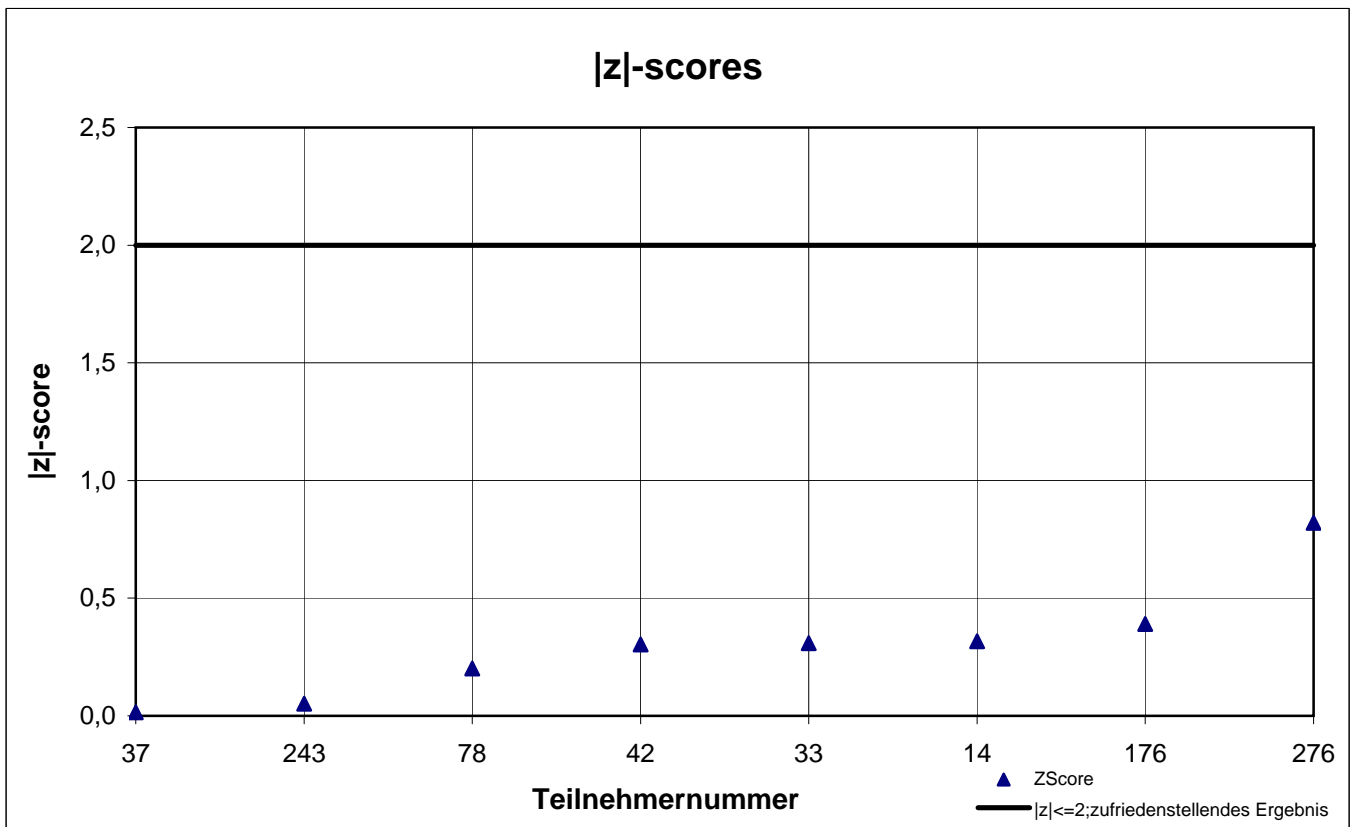
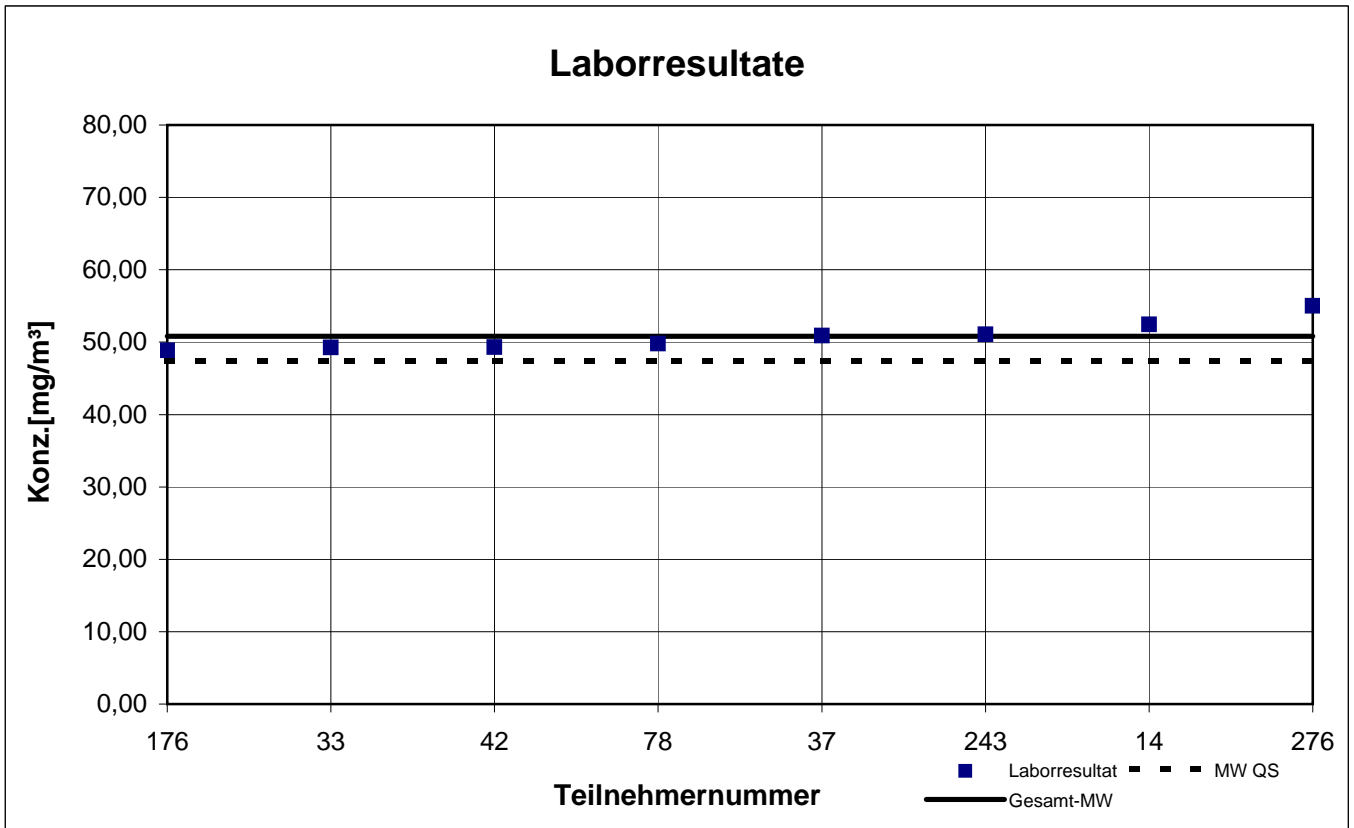
Probe 1

2-Butanon



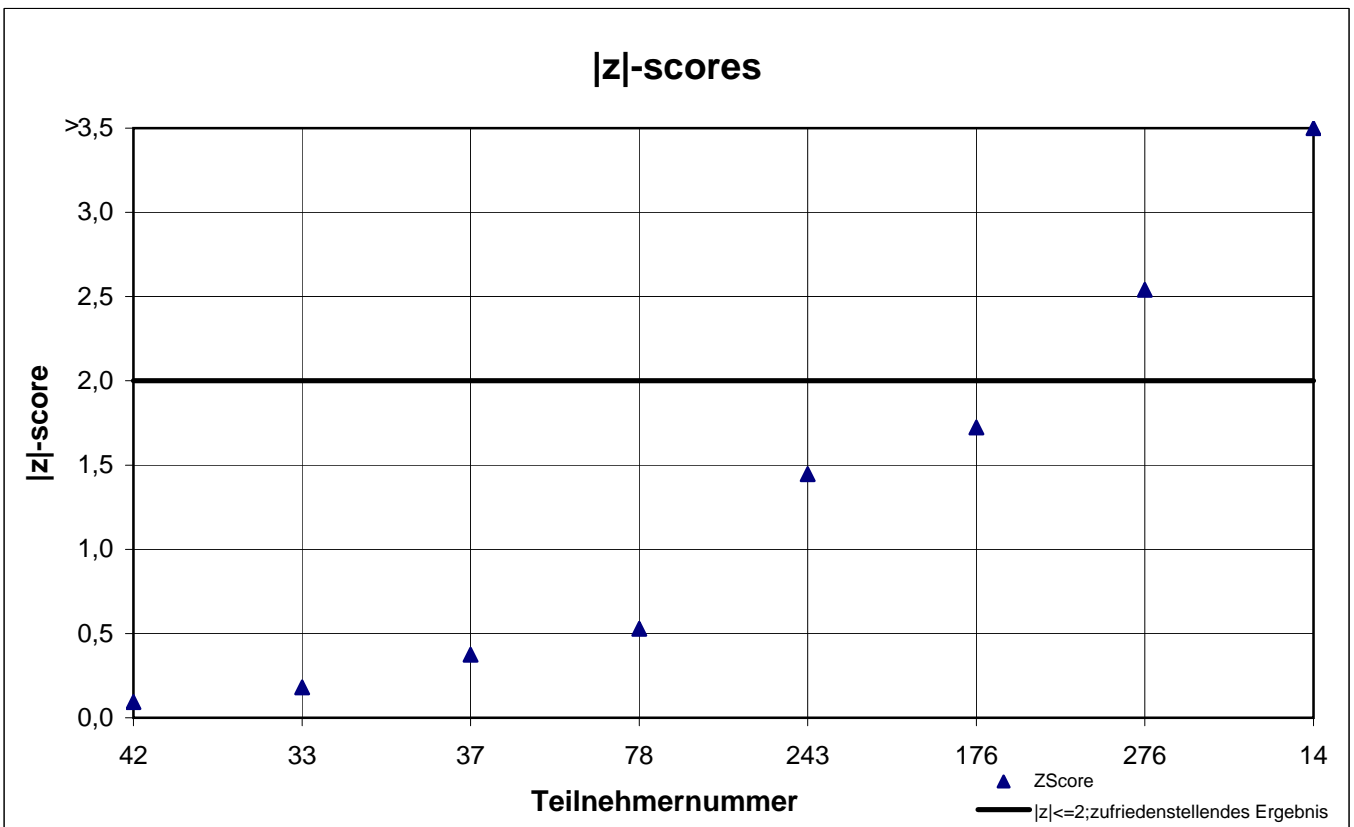
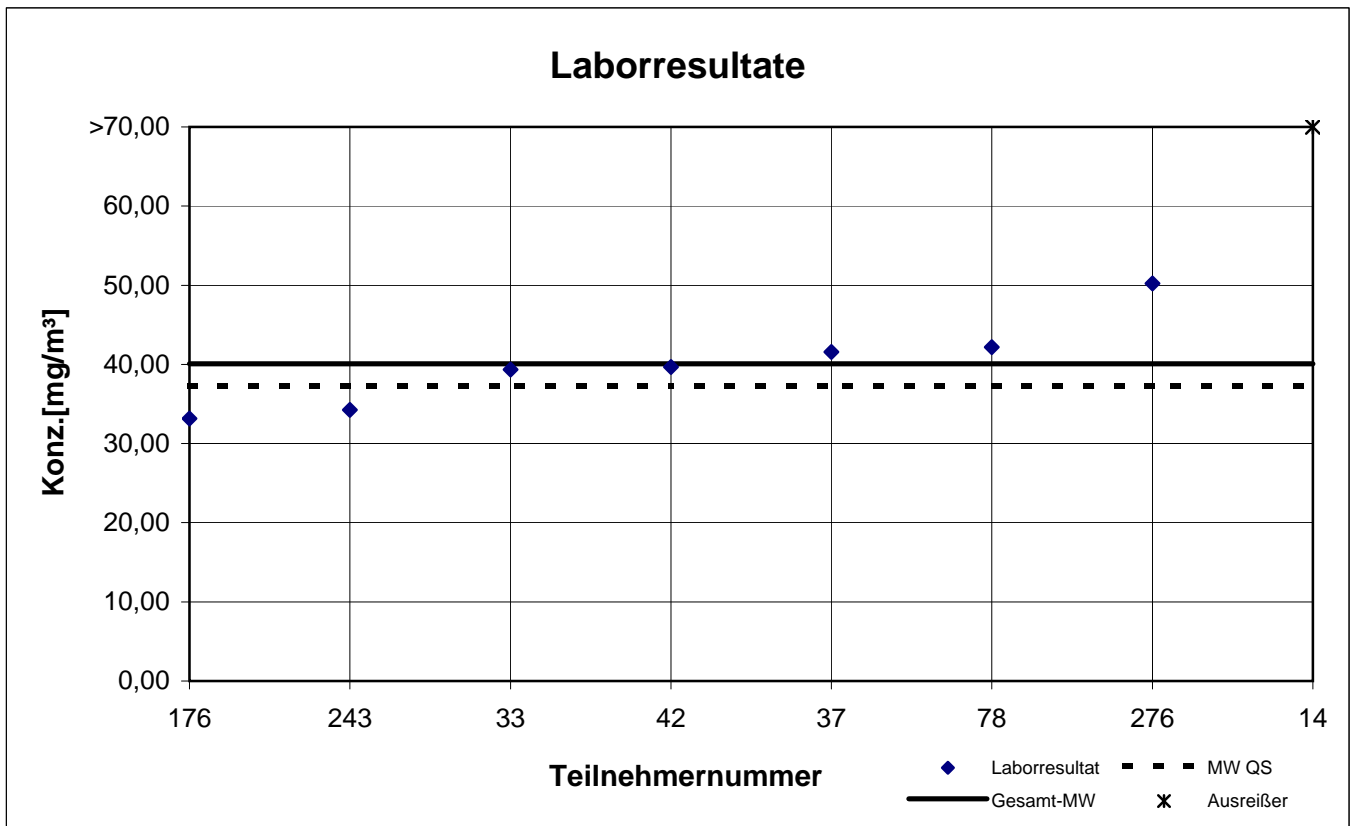
Probe 1

4-Methyl-2-pentanon



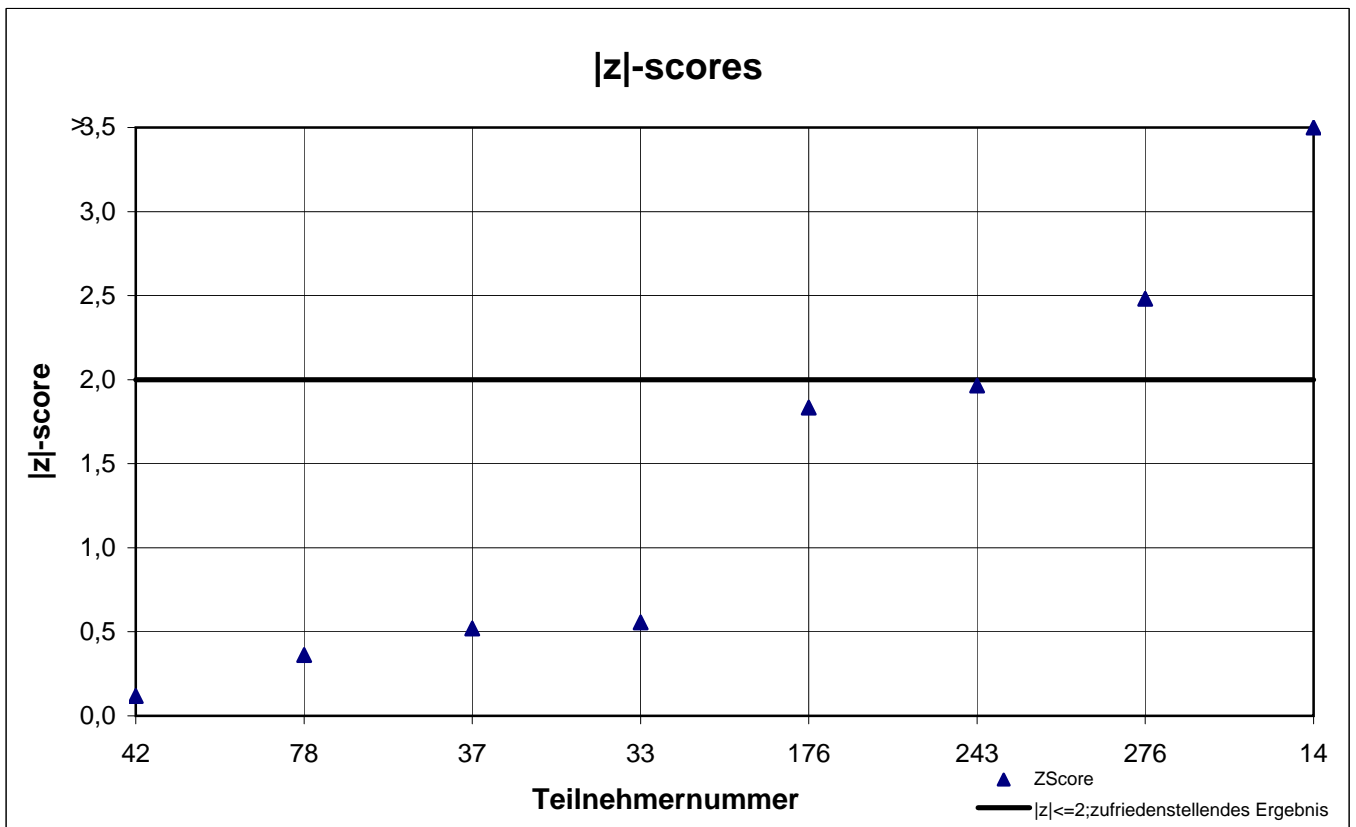
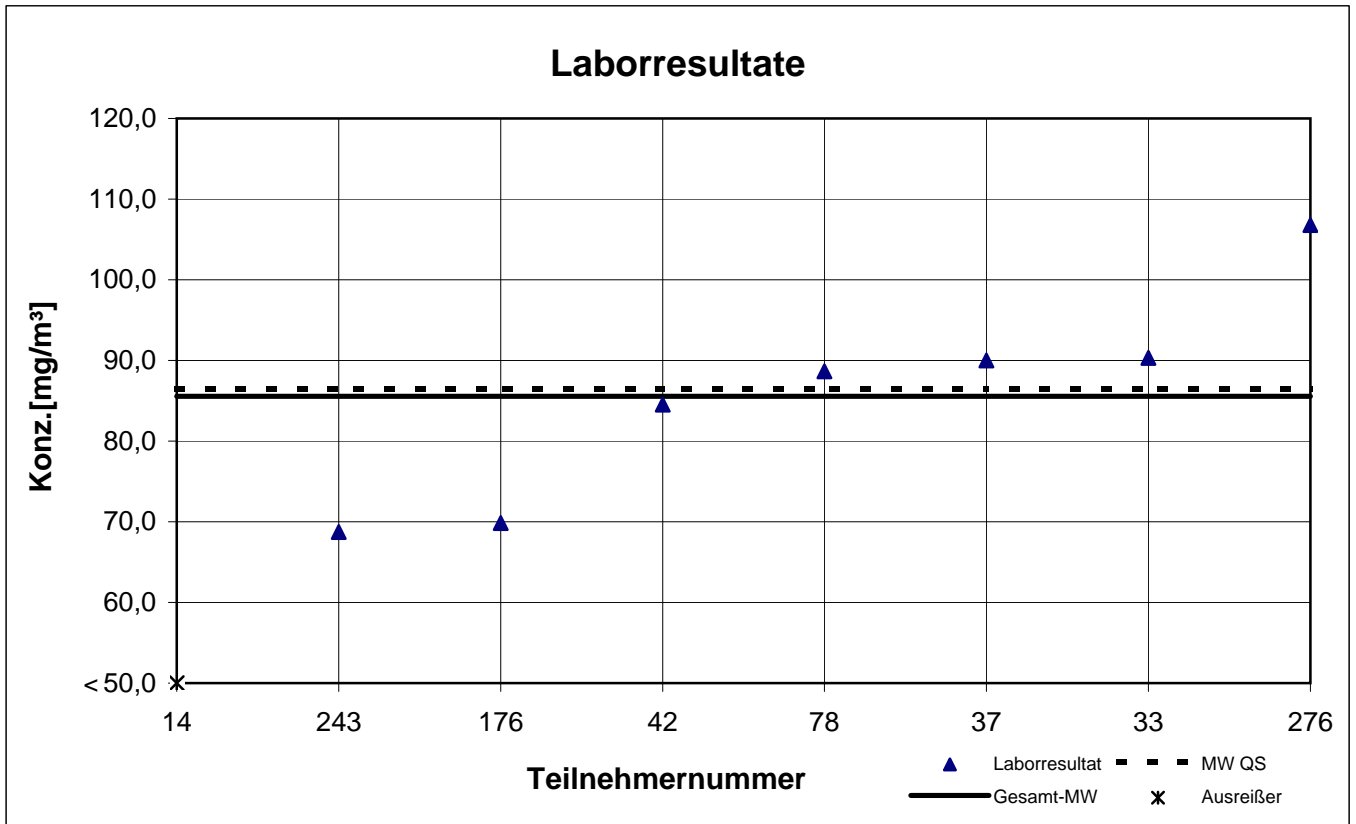
Probe 1

Cyclohexanon



Probe 1

Cyclopentanon



results sample 2

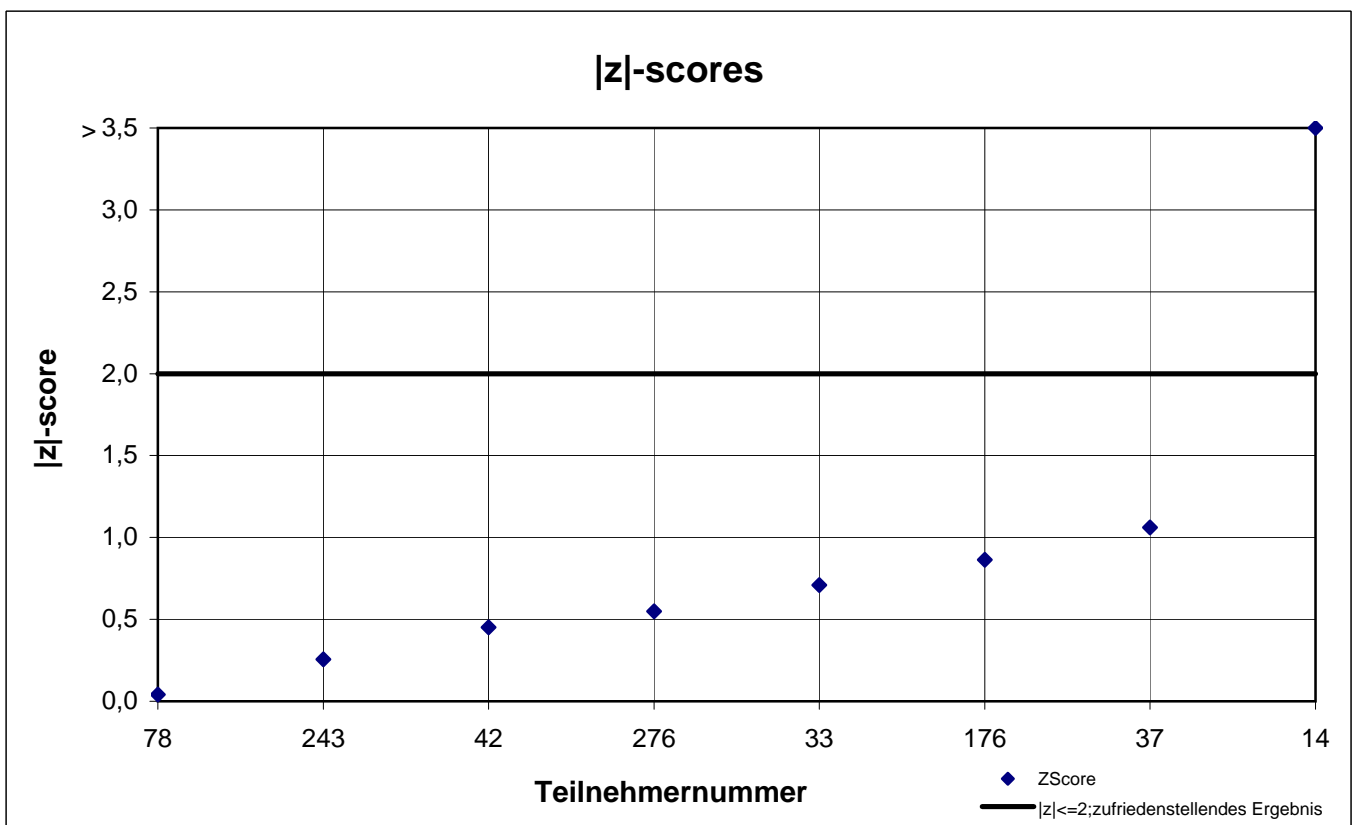
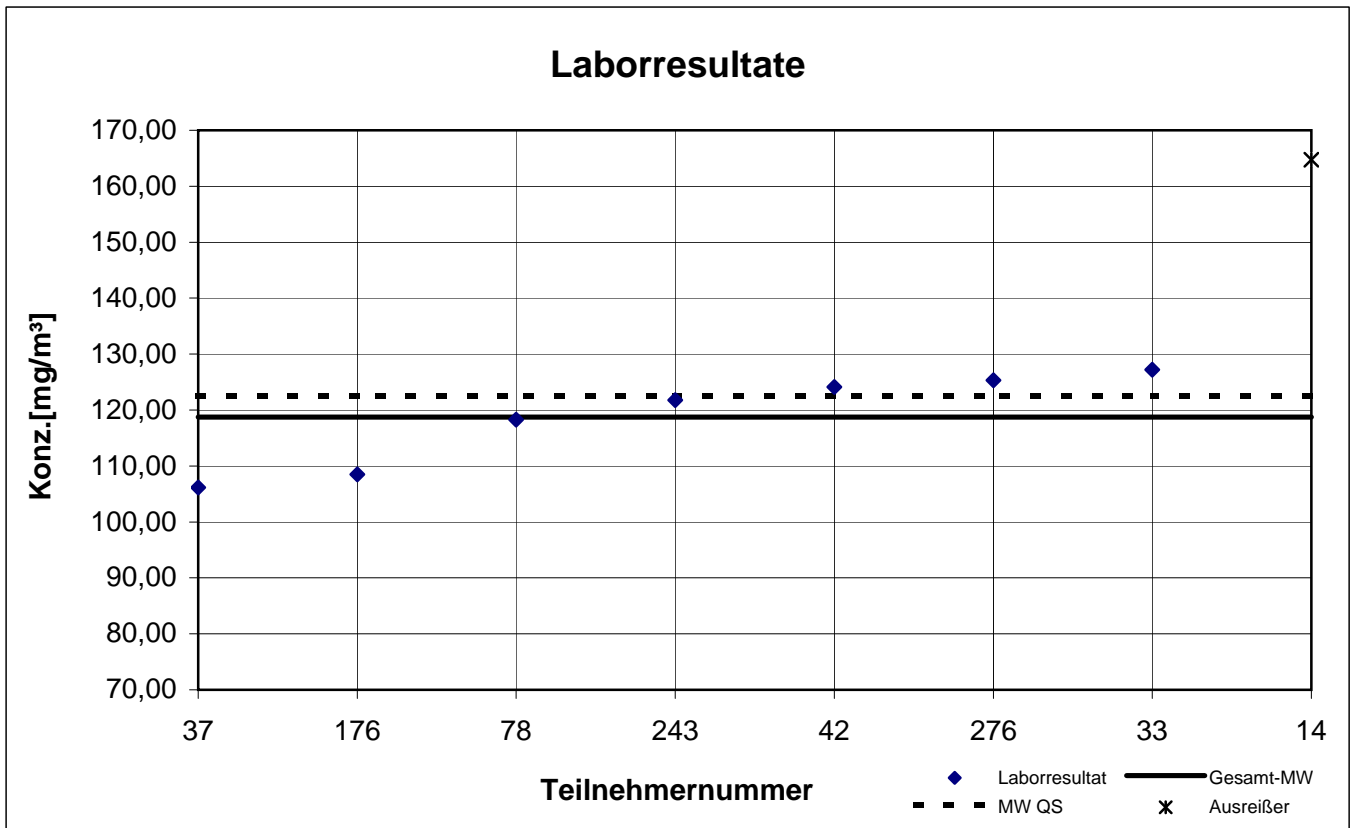
participant number	1-Butanol		Ethylbenzene		n-Butyl acetate		n-Hexane		p-Xylene		Toluene	
	result [mg/m ³]	z - score	result [mg/m ³]	z - score	result [mg/m ³]	z - score	result [mg/m ³]	z - score	result [mg/m ³]	z - score	result [mg/m ³]	z - score
14	164,7	3,9	103,0	0,9	75,68	0,2	k.A.	k.A.	58,83	1,6	35,50	0,8
33	127,2	0,7	95,87	0,1	78,33	0,6	95,47	0,4	49,57	0,2	33,47	0,2
37	106,2	1,1	87,97	0,7	69,99	0,6	100,3	0,9	46,07	0,9	29,92	0,9
42	124,1	0,5	97,73	0,3	76,74	0,4	90,17	0,2	52,09	0,3	33,36	0,2
78	118,3	0,0	91,52	0,3	72,50	0,2	89,60	0,3	49,80	0,2	32,46	0,1
176	108,5	0,9	90,50	0,5	70,10	0,5	81,60	1,1	48,65	0,4	32,20	0,2
243	121,8	0,3	95,17	0,0	75,47	0,2	93,20	0,1	50,93	0,0	32,90	0,0
267	k.A.	k.A.	k.A.	k.A.	k.A.	k.A.	k.A.	k.A.	k.A.	k.A.	k.A.	k.A.
276	125,3	0,6	96,43	0,2	73,83	0,0	93,93	0,2	49,77	0,2	32,33	0,1

 marked fields are outliers!

	1-Butanol	Ethylbenzene	n-Butylacetate	n-Hexane	p-Xylene	Toluene
mean c_k [mg / m ³]	118,8	94,77	74,08	92,04	50,71	32,77
standard deviation S_k [mg/m ³]	8,329	4,705	3,042	5,822	3,718	1,560
relative standard deviation [%]	7,01	4,96	4,11	6,33	7,33	4,76
"true result" [mg/m ³]	122,6	98,70	74,00	91,20	52,30	31,90

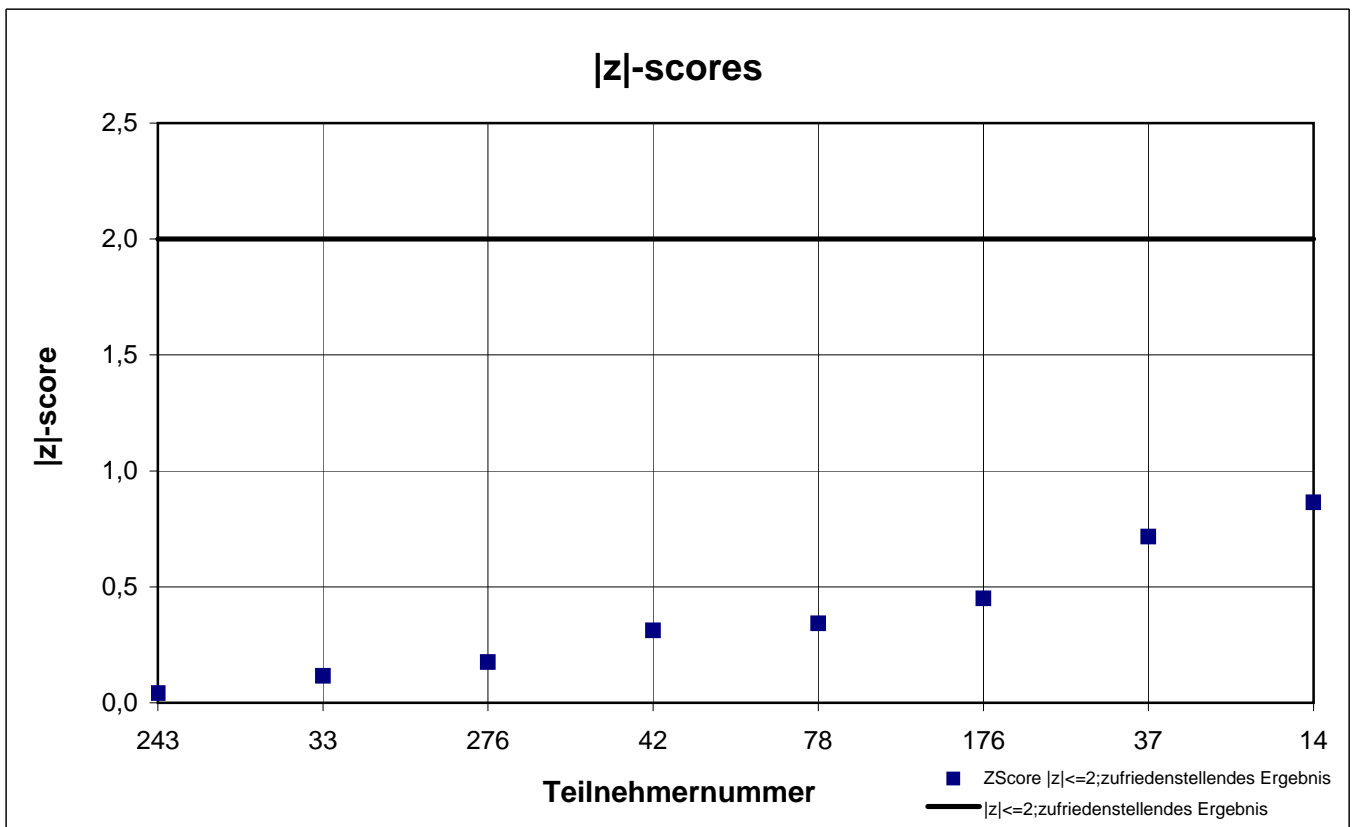
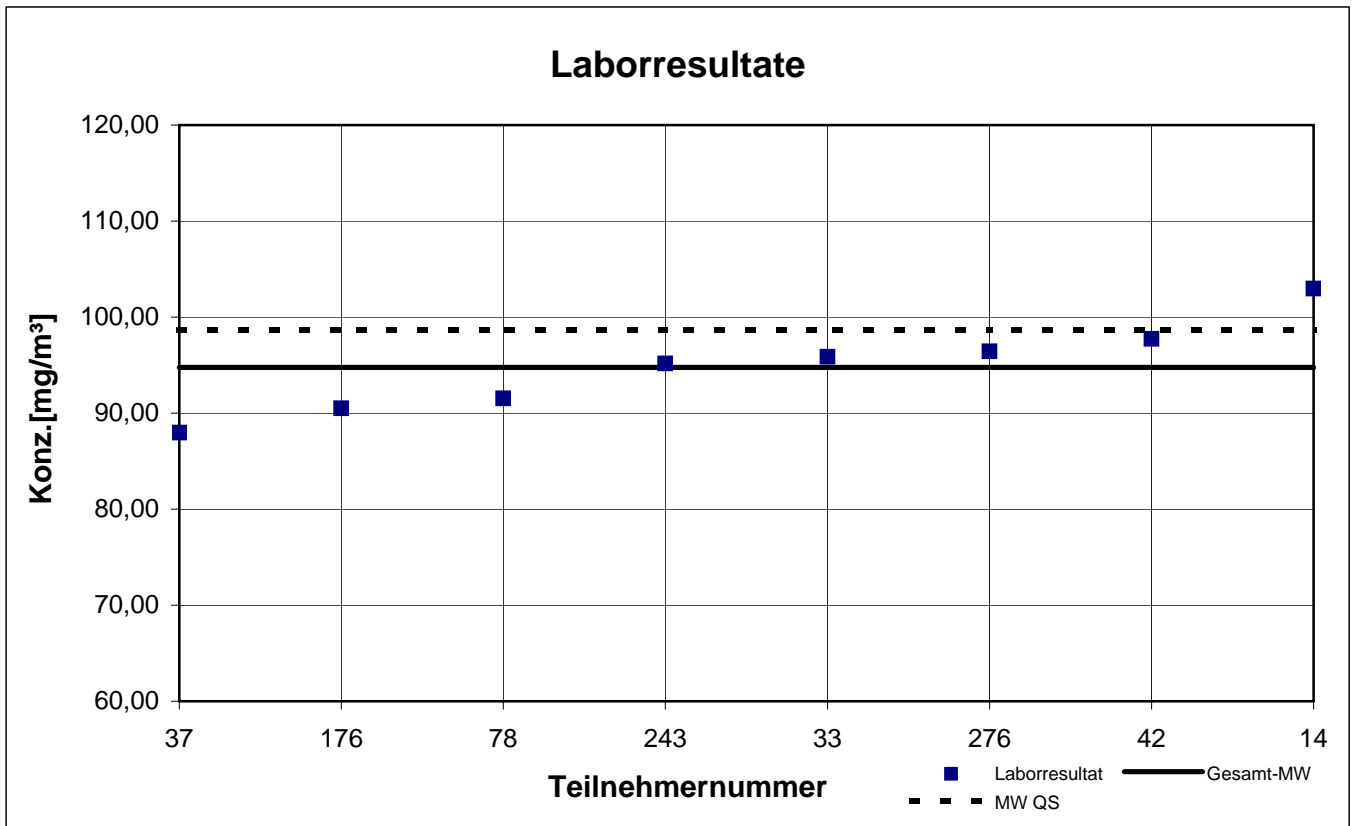
Probe 2

1-Butanol



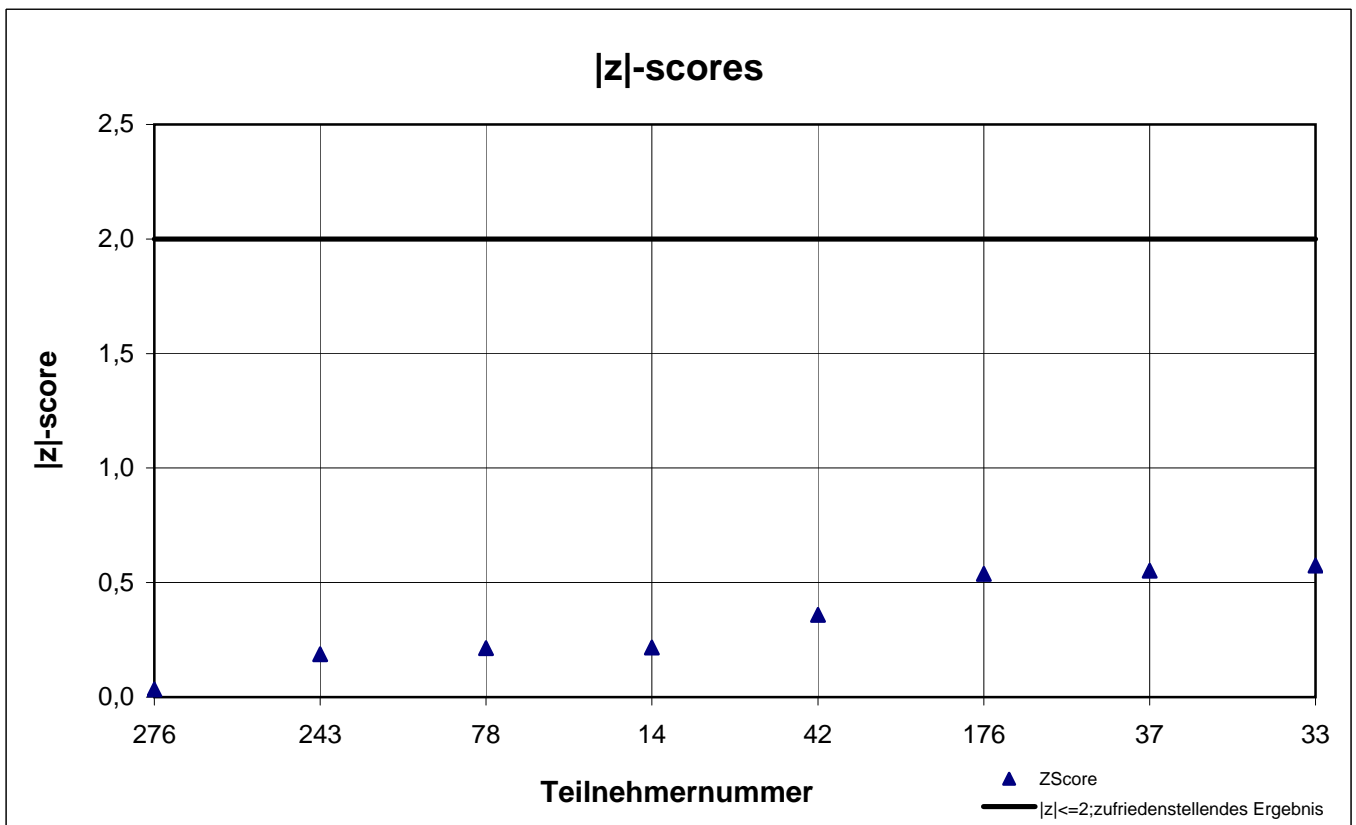
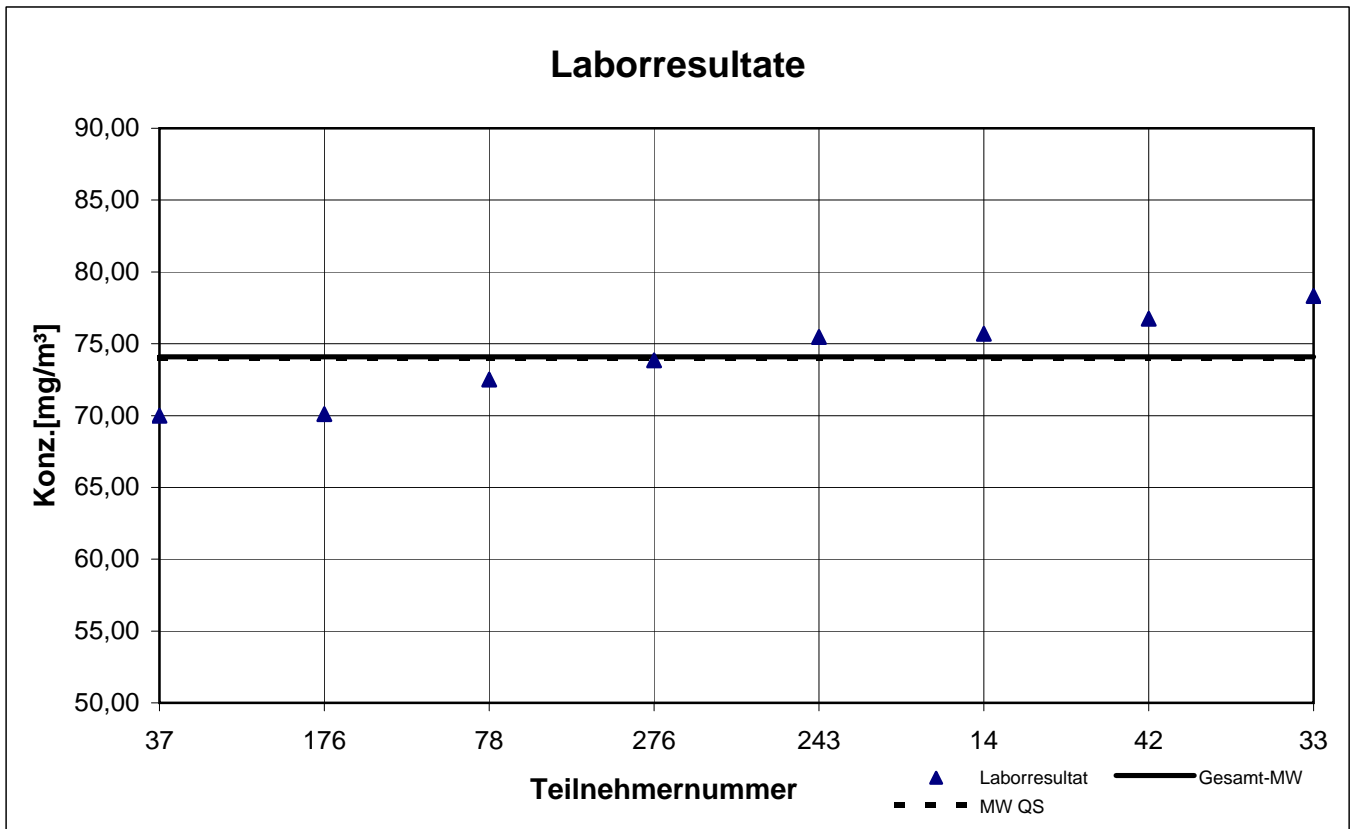
Probe 2

Ethylbenzol



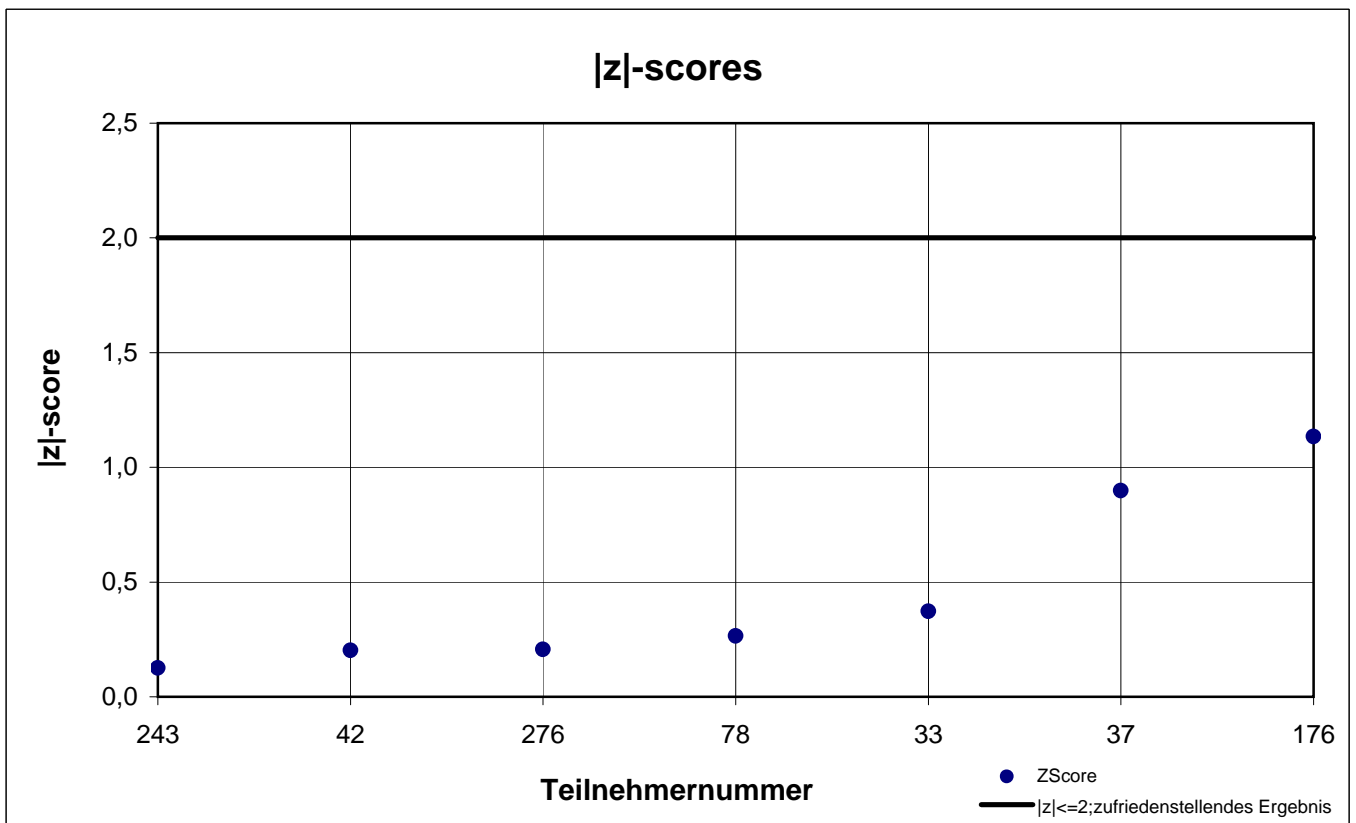
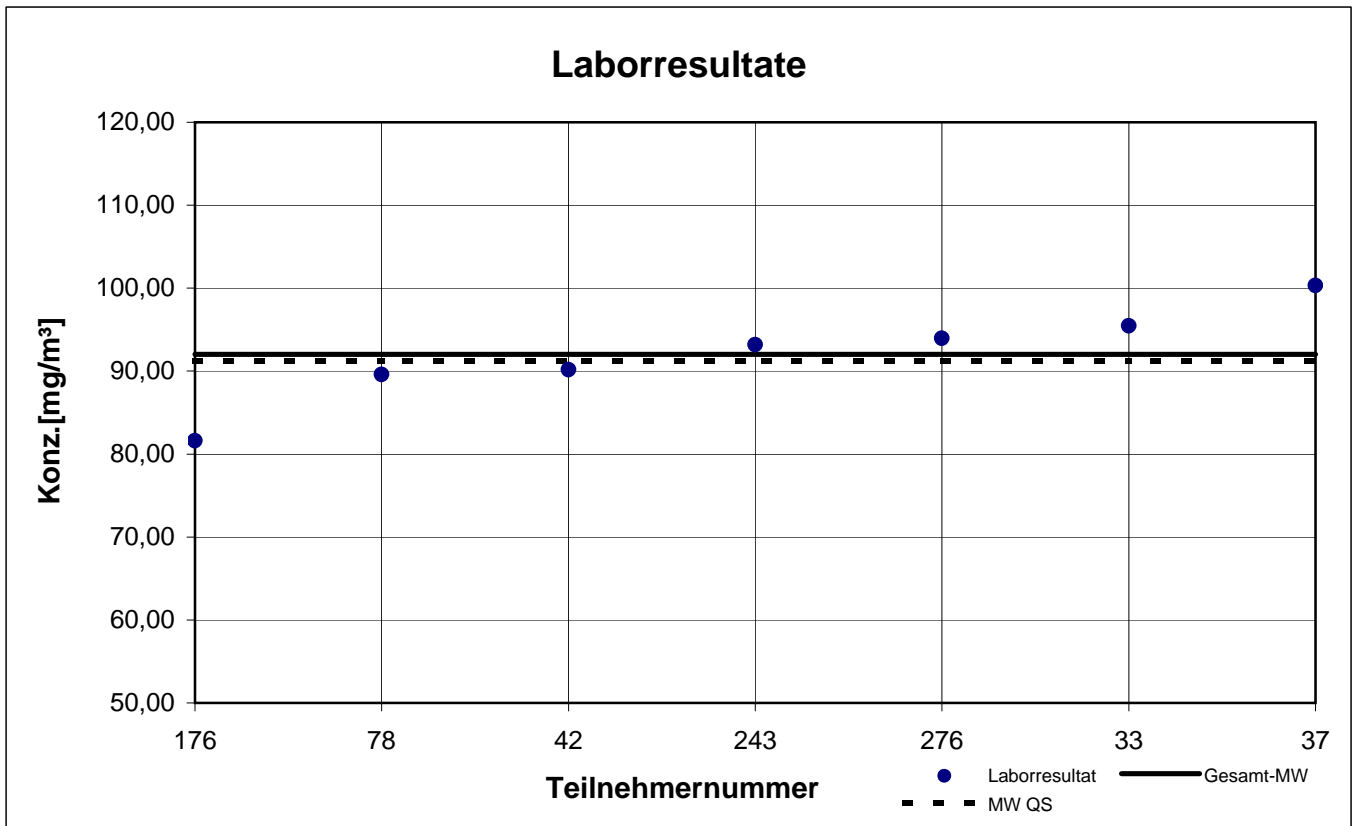
Probe 2

n-Butylacetat



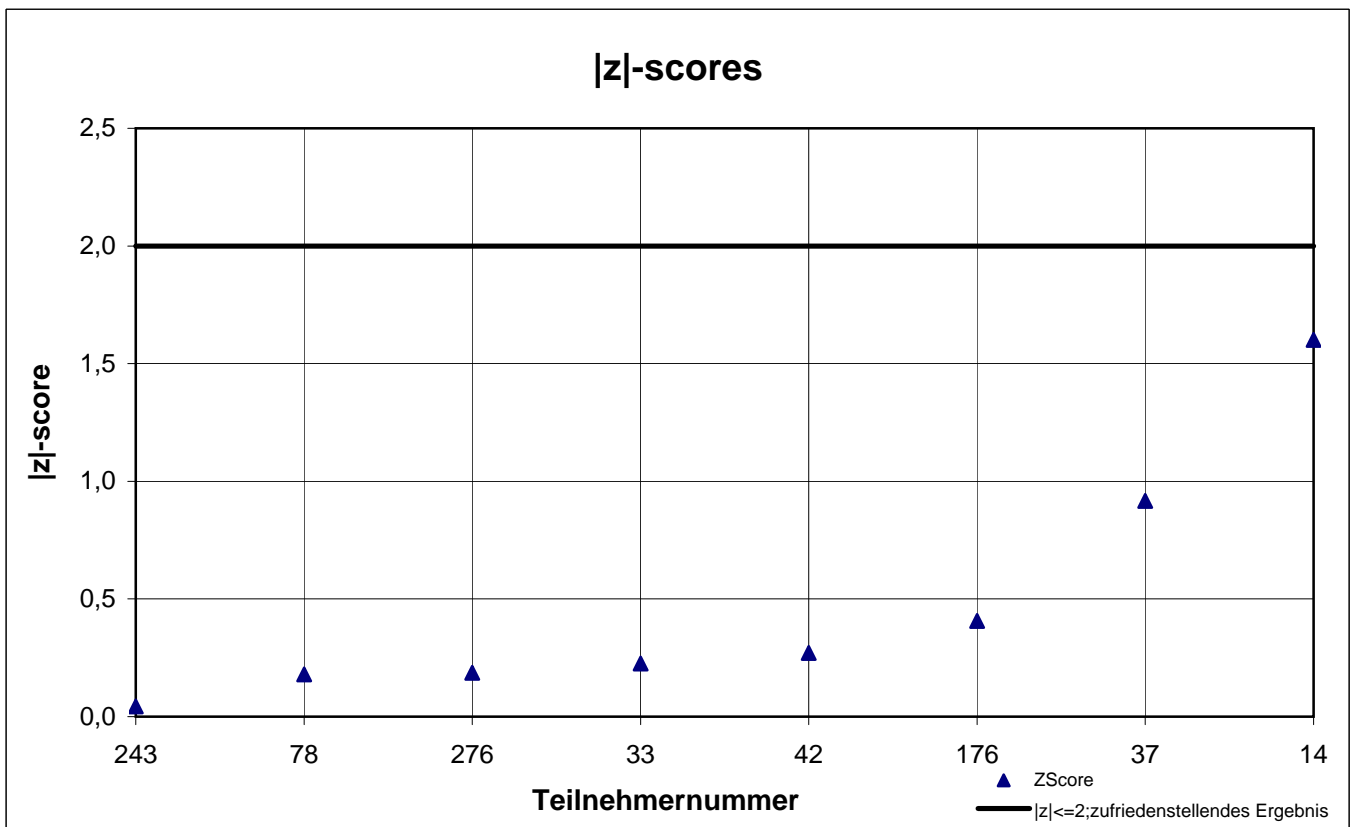
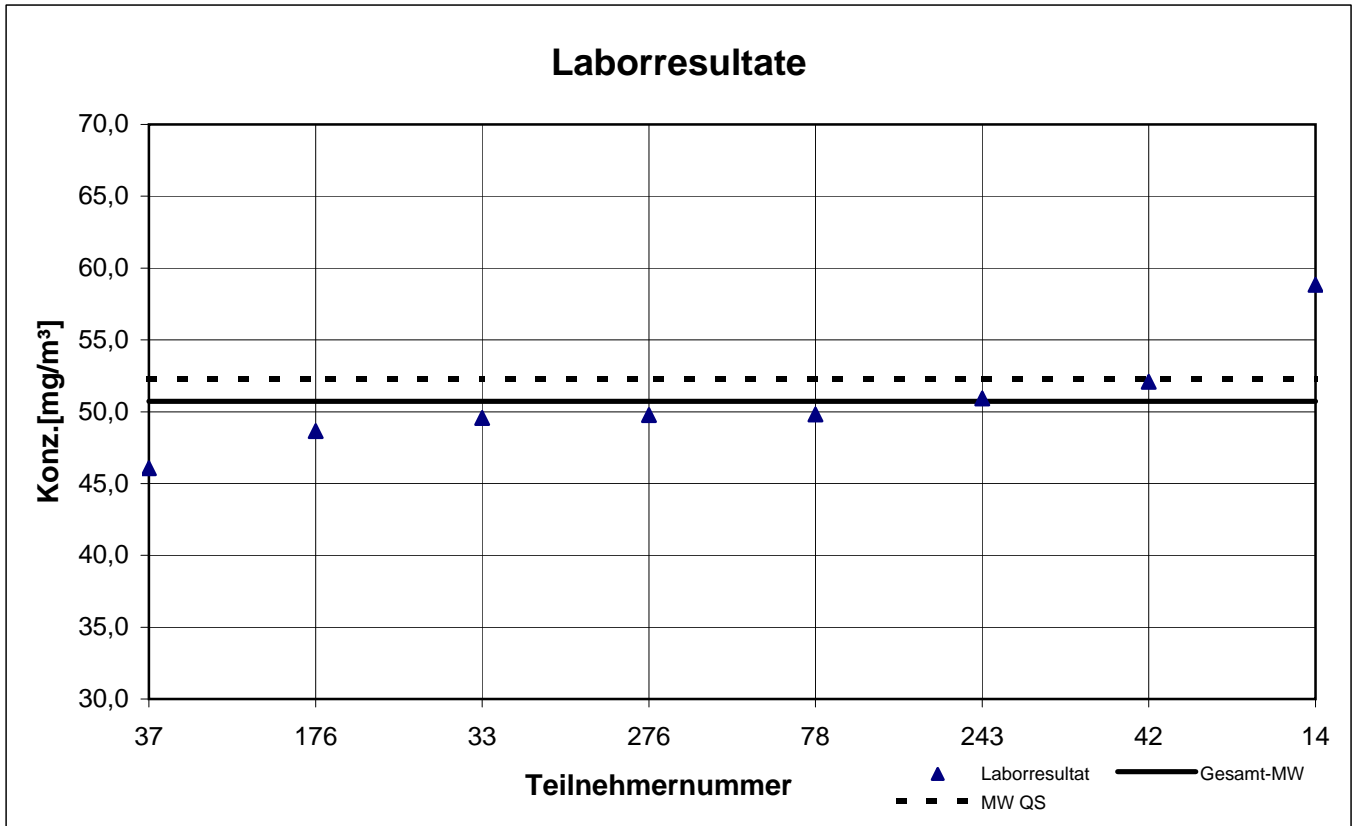
Probe 2

n-Hexan



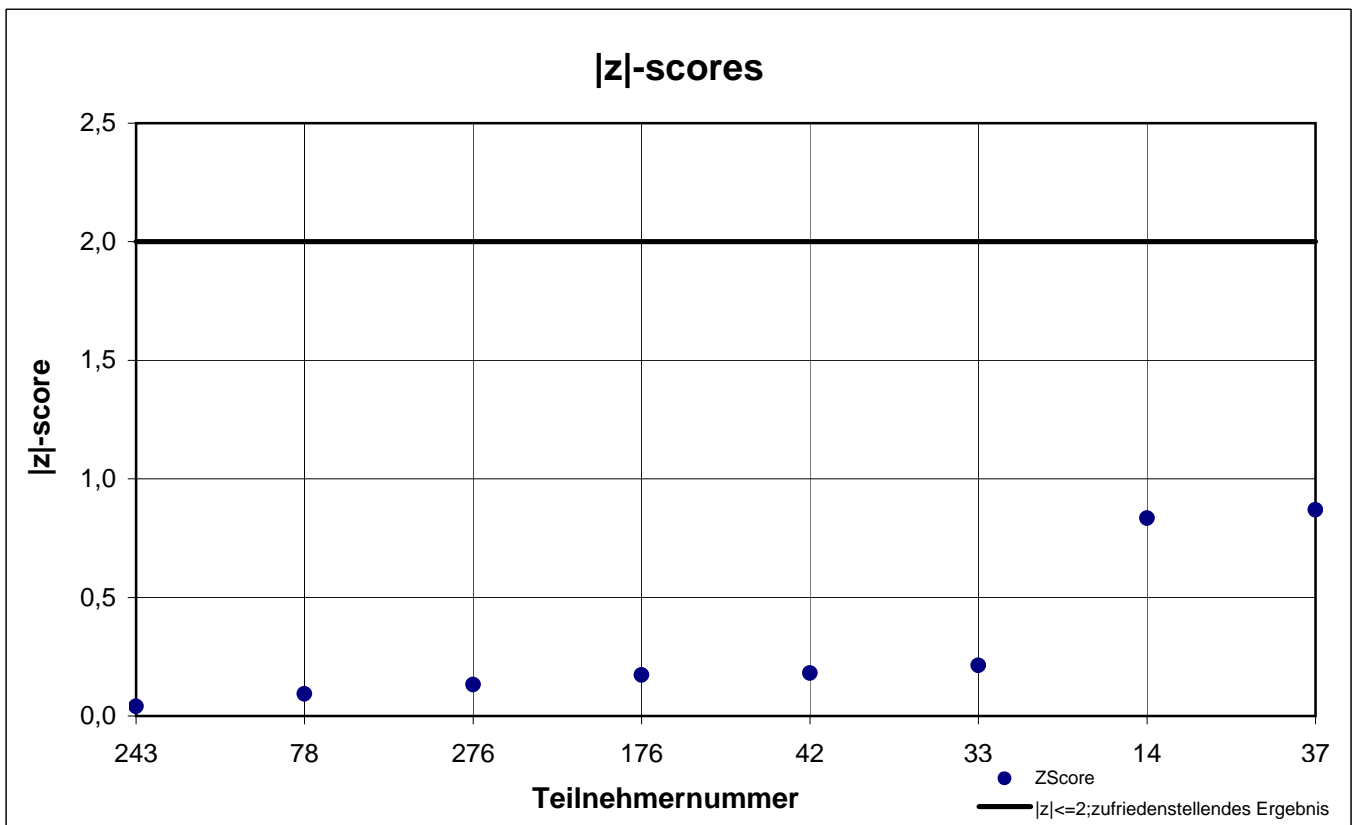
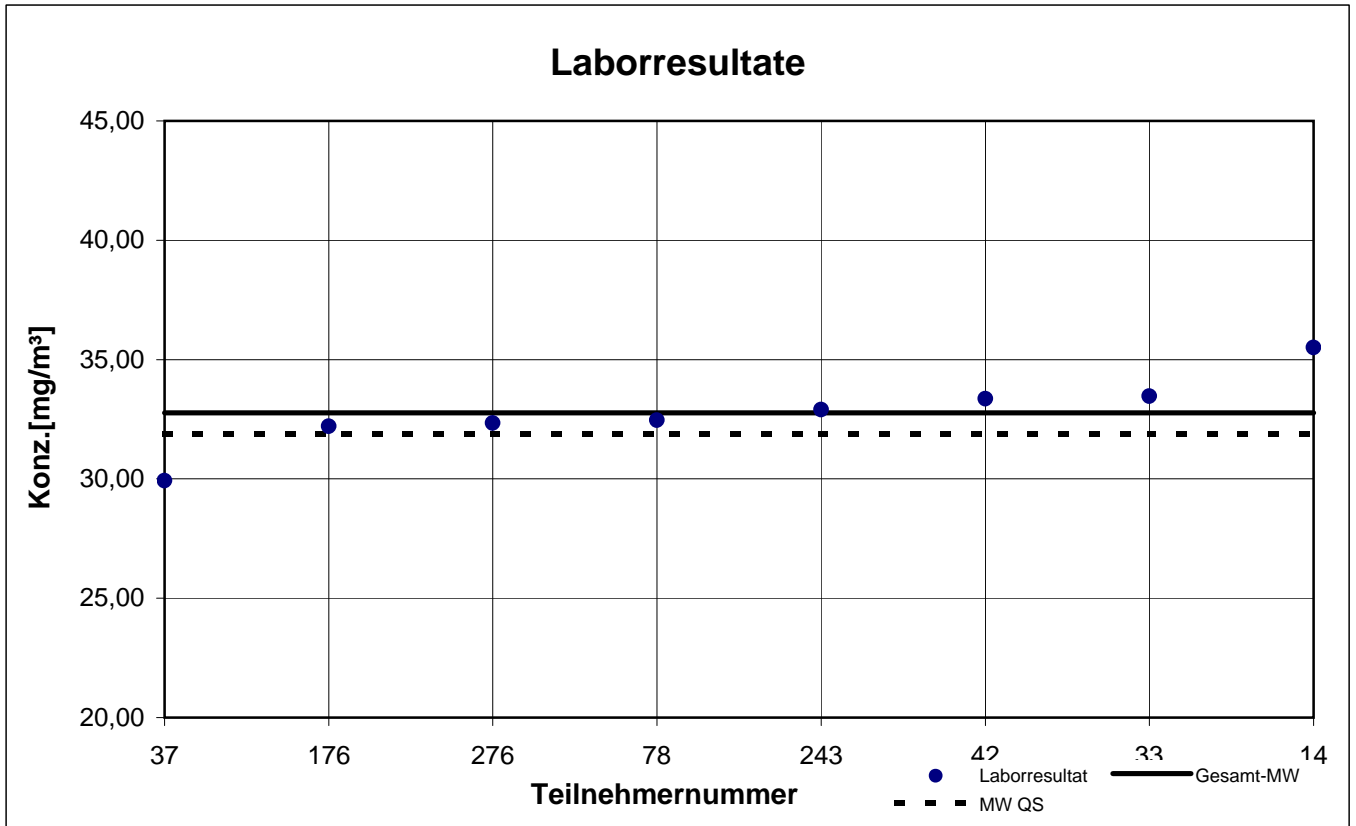
Probe 2

p-Xylol



Probe 2

Toluol



results sample 3

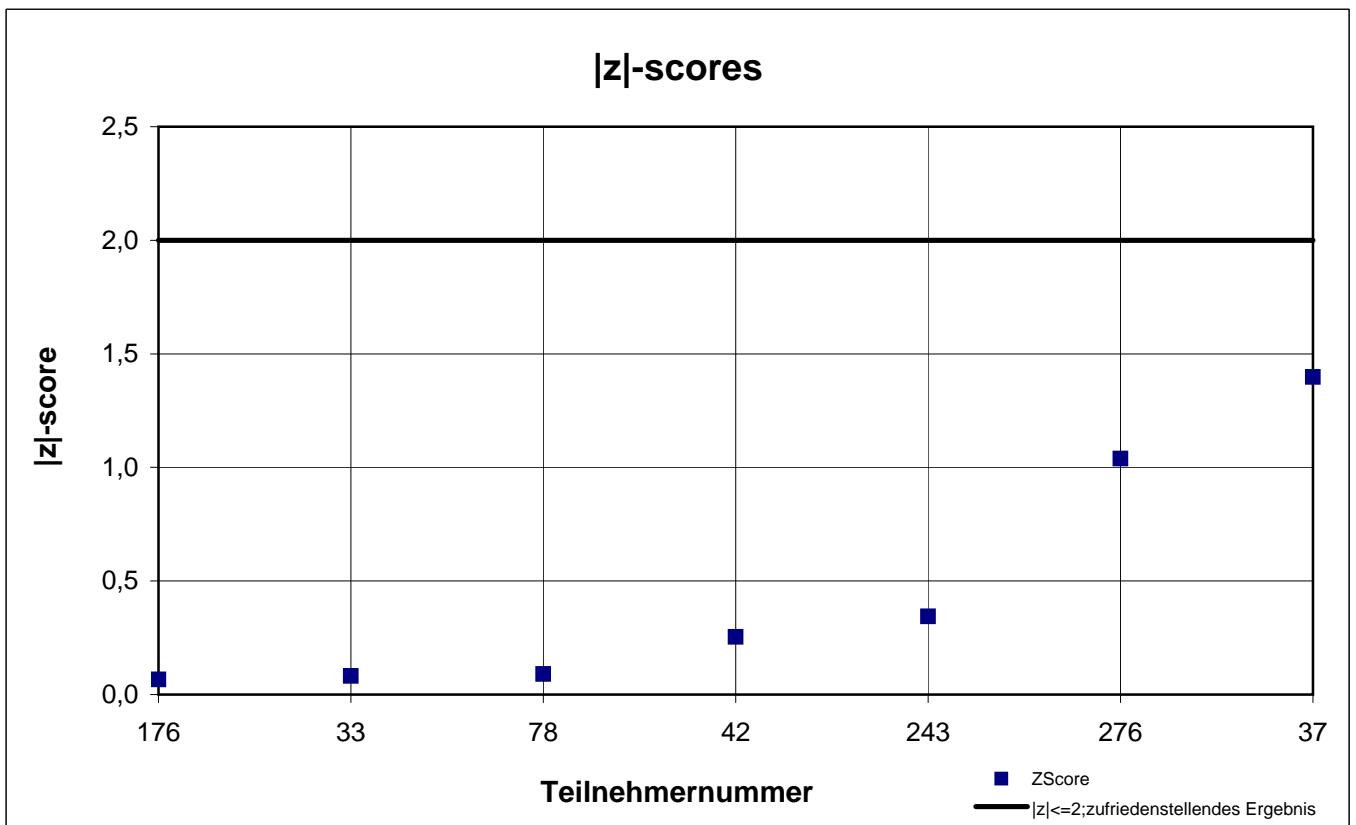
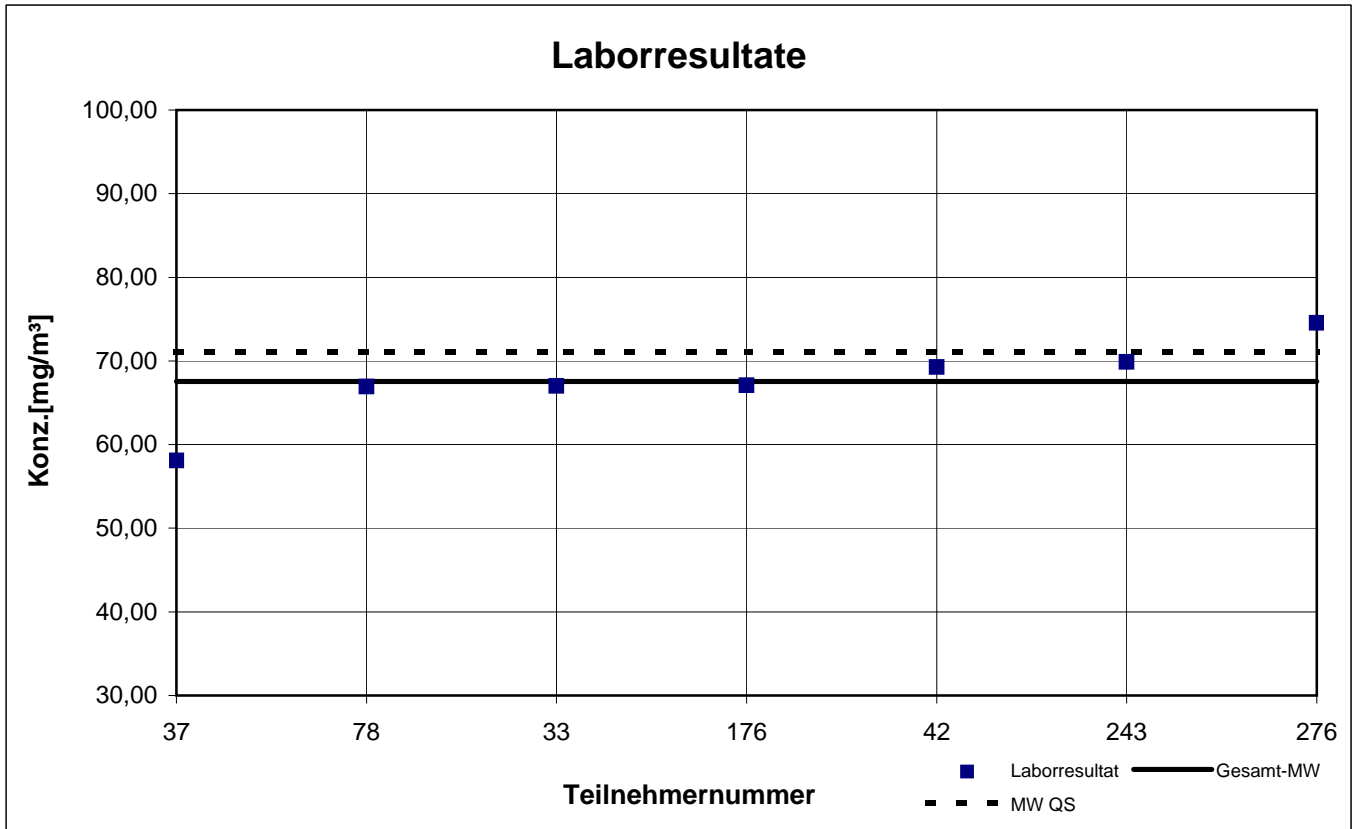
participant number	1-Methoxy-2-propanol		2-Butanol		2-Butoxyethanol		Ethanol	
	result [mg/m³]	z - score	result [mg/m³]	z - score	result [mg/m³]	z - score	result [mg/m³]	z - score
14	k.A.	k.A.	87,54	2,5	k.A.	k.A.	168,6	3,1
33	67,00	0,1	69,30	0,1	15,20	0,7	136,6	0,6
37	58,10	1,4	59,57	1,5	16,90	0,4	117,0	0,9
42	69,26	0,3	67,05	0,4	16,17	0,1	125,3	0,3
78	66,94	0,1	65,01	0,7	15,91	0,2	121,6	0,6
176	67,10	0,1	71,20	0,2	17,40	0,7	130,5	0,1
243	69,87	0,3	64,93	0,7	15,70	0,4	96,8	2,5
267	k.A.	k.A.	k.A.	k.A.	k.A.	k.A.	k.A.	k.A.
276	74,57	1,0	73,77	0,6	16,833	0,3	134,4	0,4

 marked fields are outliers!

	1-Methoxy-2-propanol	2-Butanol	2-Butoxyethanol	Ethanol
mean c_k [mg / m³]	67,55	69,80	16,30	128,9
standard deviation S_k [mg/m³]	4,962	8,378	0,774	20,377
relative standard deviation [%]	7,35	12,00	4,75	15,81
"true result" [mg/m³]	71,10	66,40	15,50	131,7

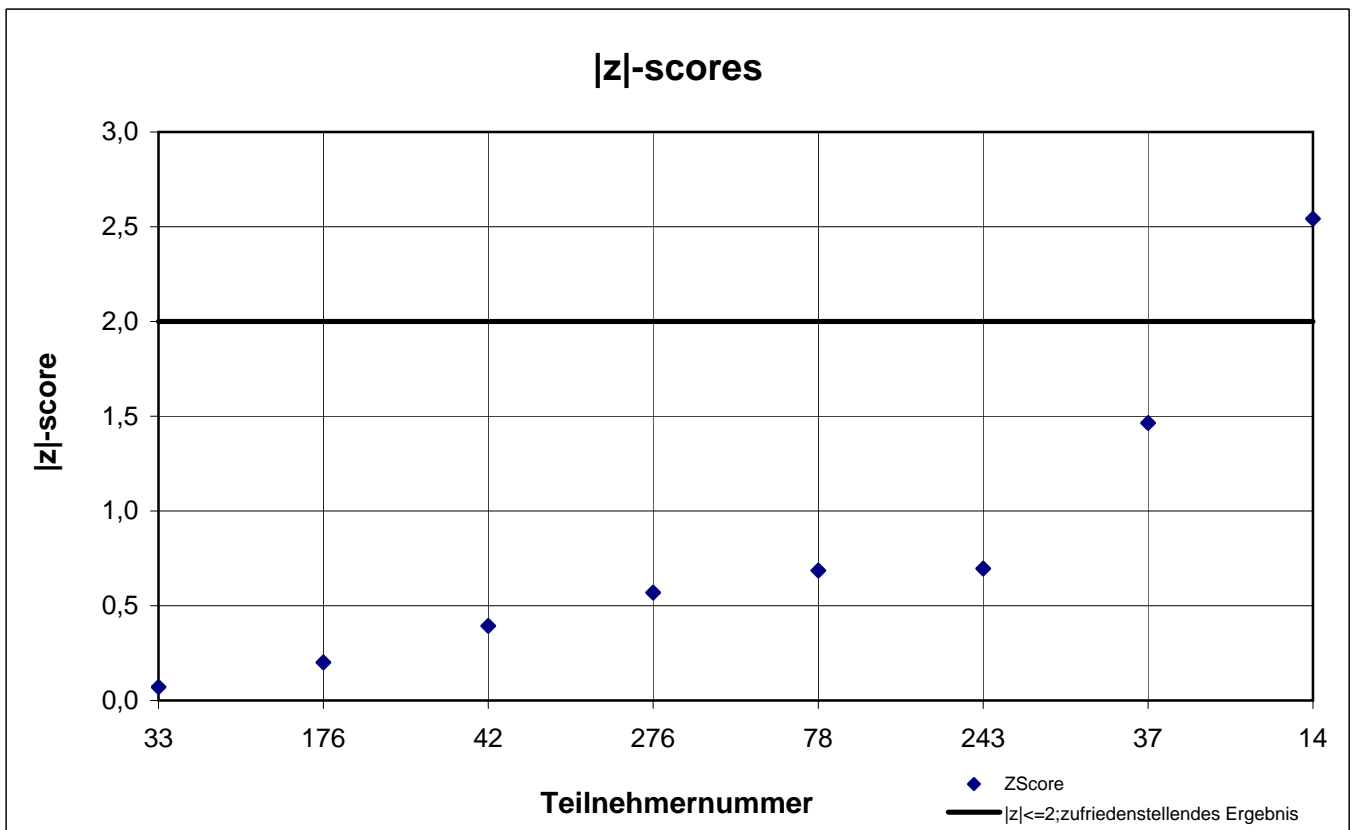
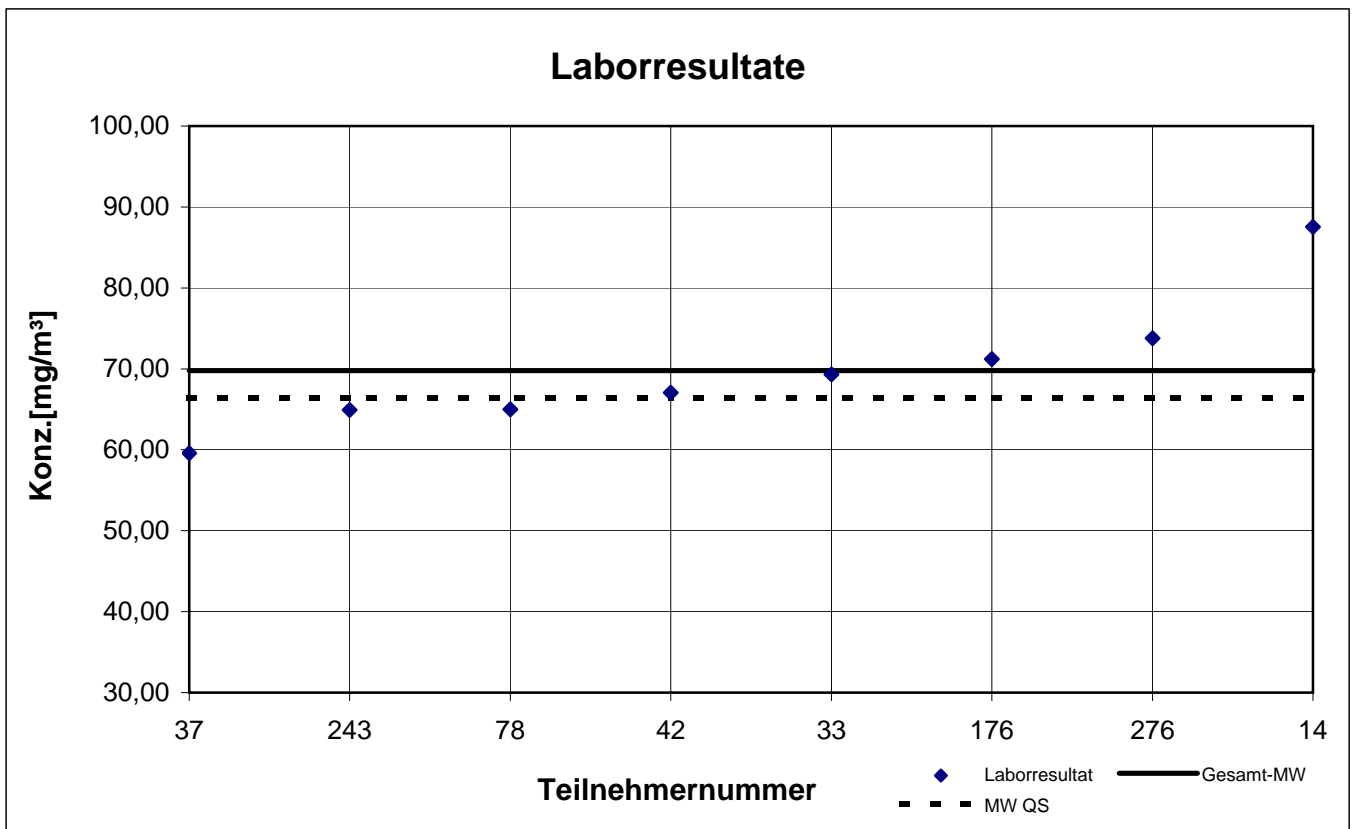
Probe 3

1-Methoxy-2-propanol



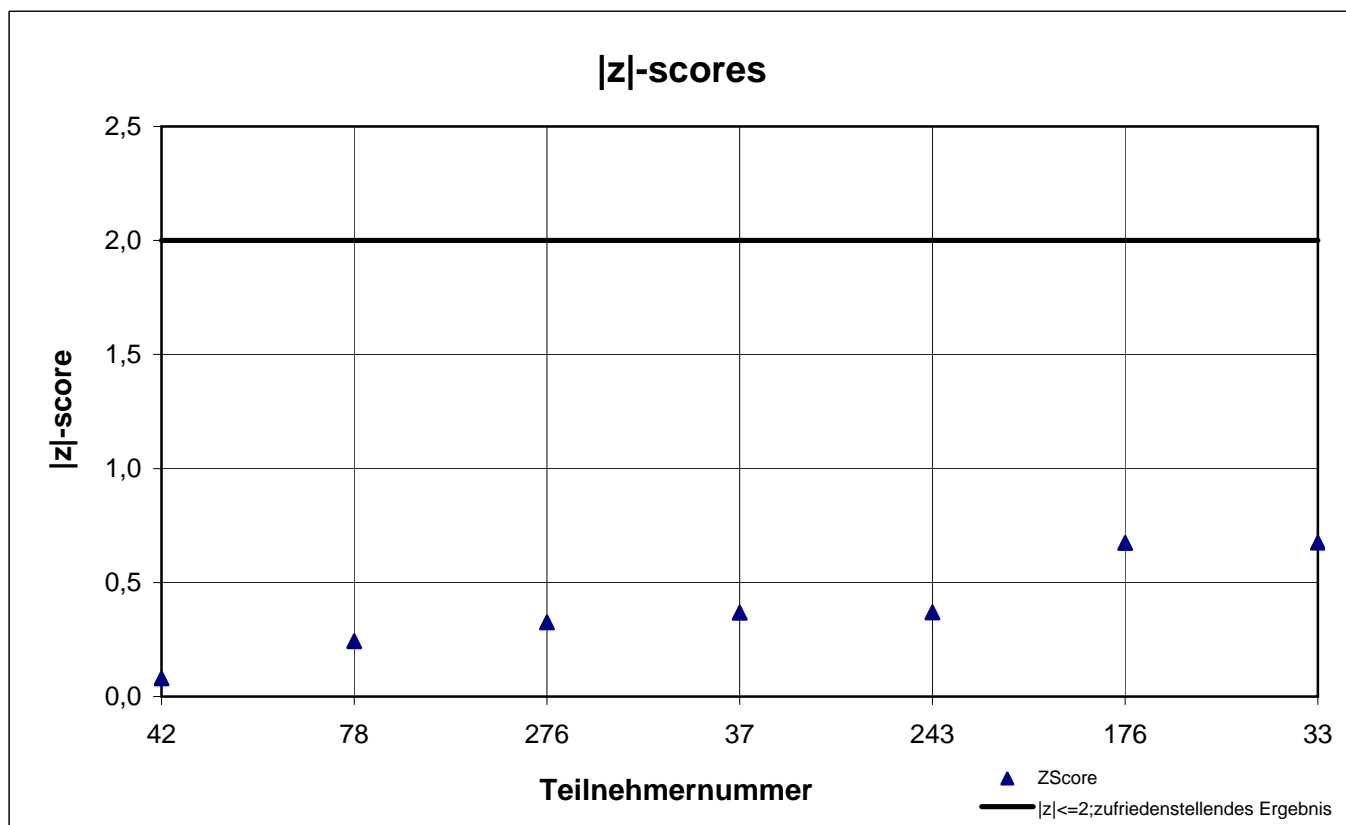
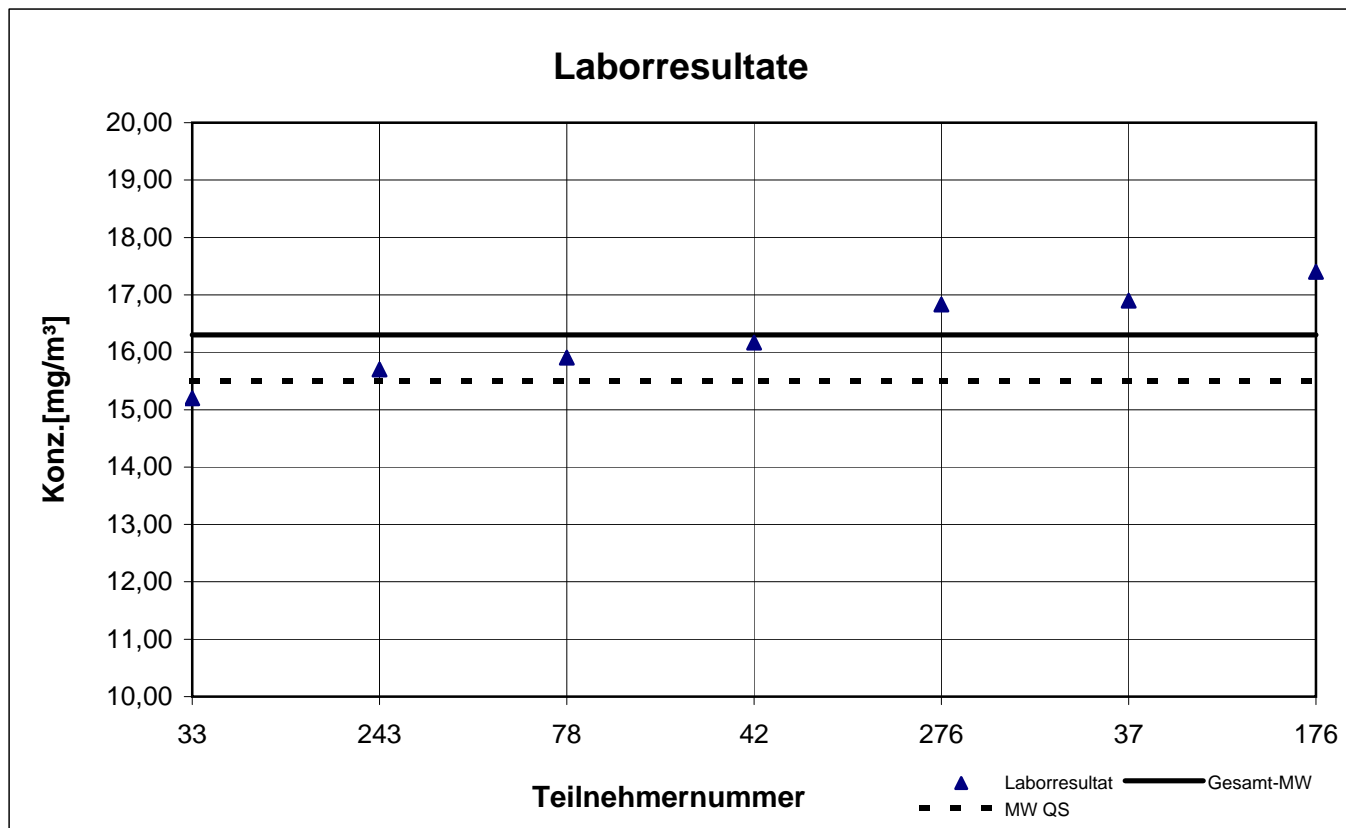
Probe 3

2-Butanol



Probe 3

2-Butoxyethanol



Probe 3

Ethanol

